



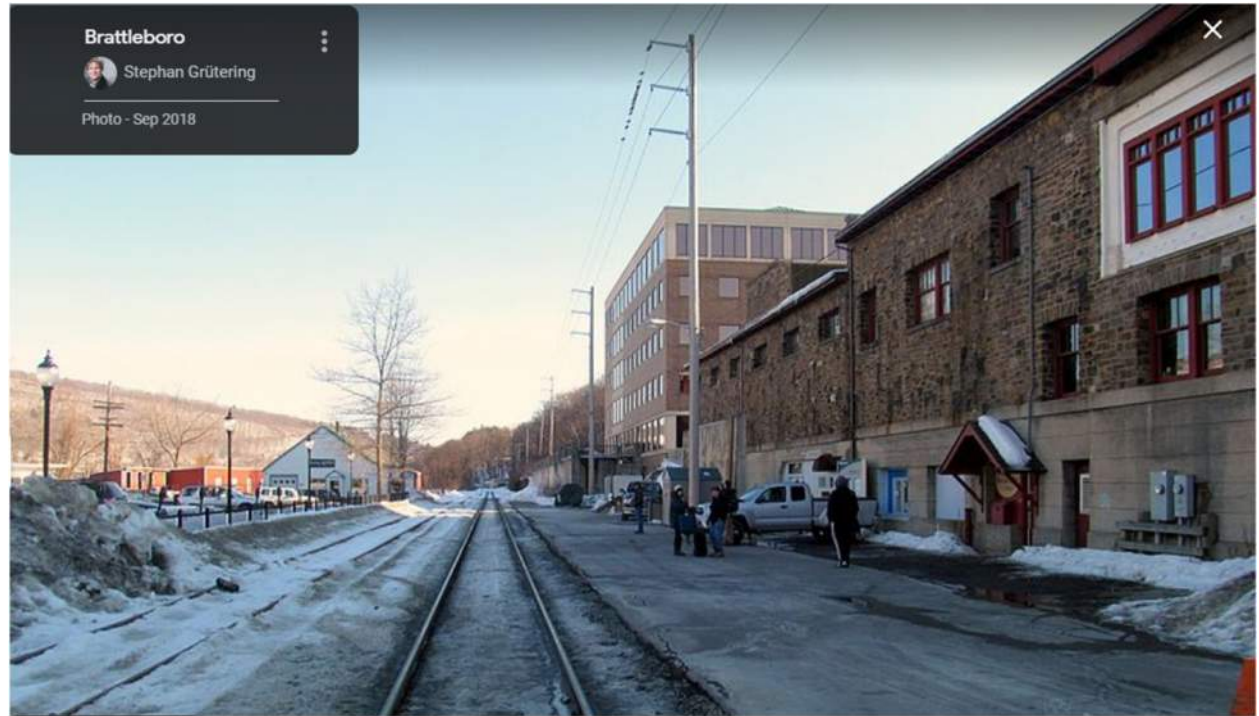
# ADA Stations Program (ADASP) Brattleboro Station



Presentation to VT Rail Council  
August 13, 2024

# Amtrak ADASP OVERVIEW

- Federal law requires that public passenger carriers, such as Amtrak, make all stations they serve compliant with the Americans with Disabilities Act of 1990 (“ADA”), where they are the responsible entity.
- The ***Amtrak ADA Stations Program*** mission is to bring all station components, for which Amtrak has responsibility, into compliance with ADA requirements to provide the best possible service to all passengers.
- Improvements must adhere to the 2006 Department of Transportation Accessibility Standards (“DOTAS”), Amtrak Stations Standards, and guidelines recommended by the State Historic Preservation Office (“SHPO”) using the Secretary of the Interior’s Standards for Rehabilitation.



# Brattleboro Station – Existing Conditions

## Existing Station:

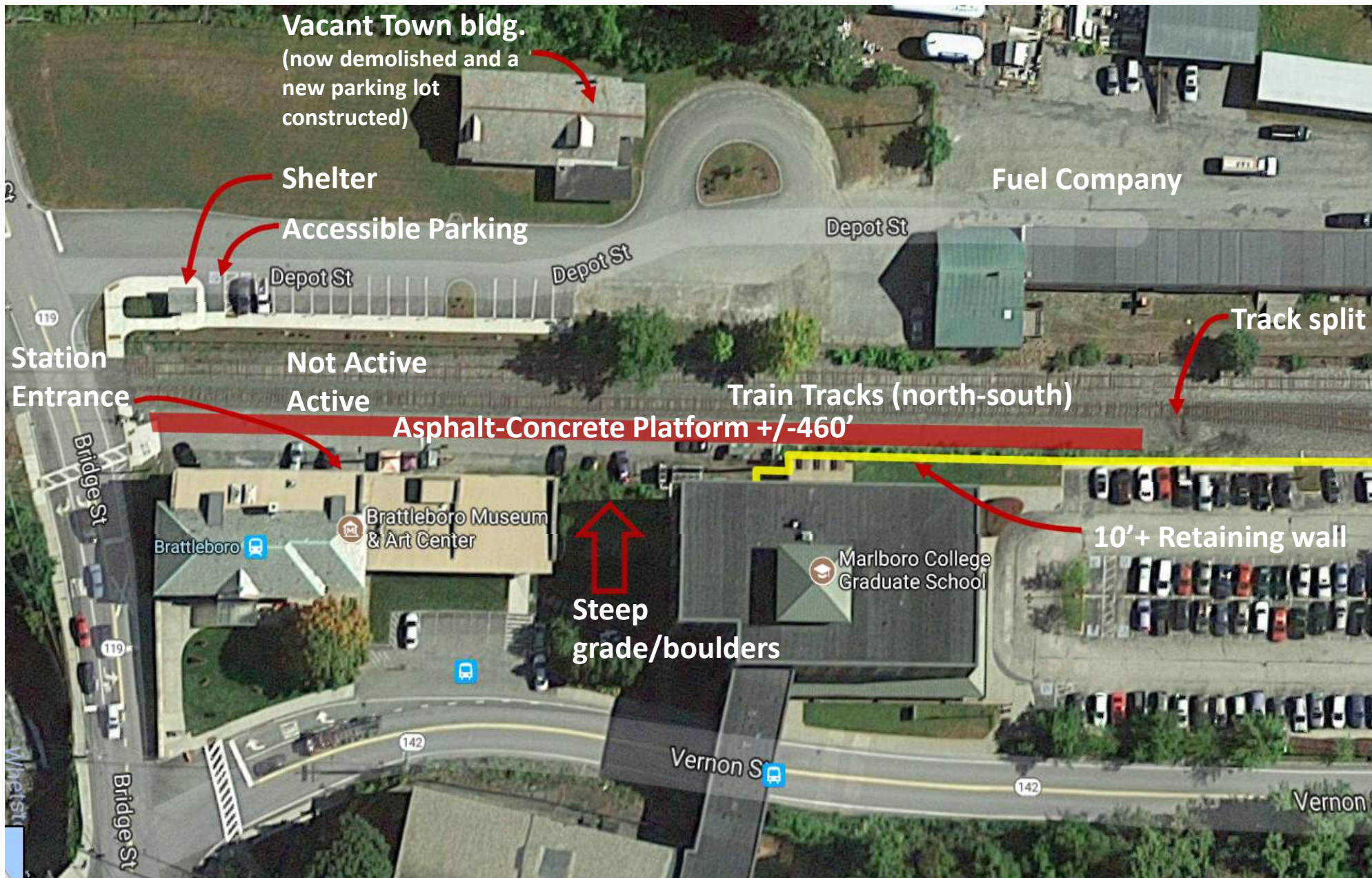
- Located on the *Vermont* route, served by 2 trains daily; ridership was 16,765 in 2019; 13,850 in 2022; and 15,180 in 2023.
- Tracks and Railroad Right-of-Way (ROW) owned by NECR (New England Central Railroad – Genesee & Wyoming). A main track and a siding track run through the station. The siding track was not active and was used for storage of maintenance equipment.
- Station building, parking and all surrounding property owned by the Town of Brattleboro
- Amtrak utilizes basement space within the Town's historic station building for a small waiting room, single occupant restroom, and engineer/caretaker room
- Current asphalt platform is ~460 feet long at 0" above top of rail and is deteriorated

## Stakeholders include:

- VTRANS, Town of Brattleboro, NECR, Senator Leahy (retired), State Representative Mollie Burke, Green Mountain Power



# Brattleboro Station – Existing Conditions





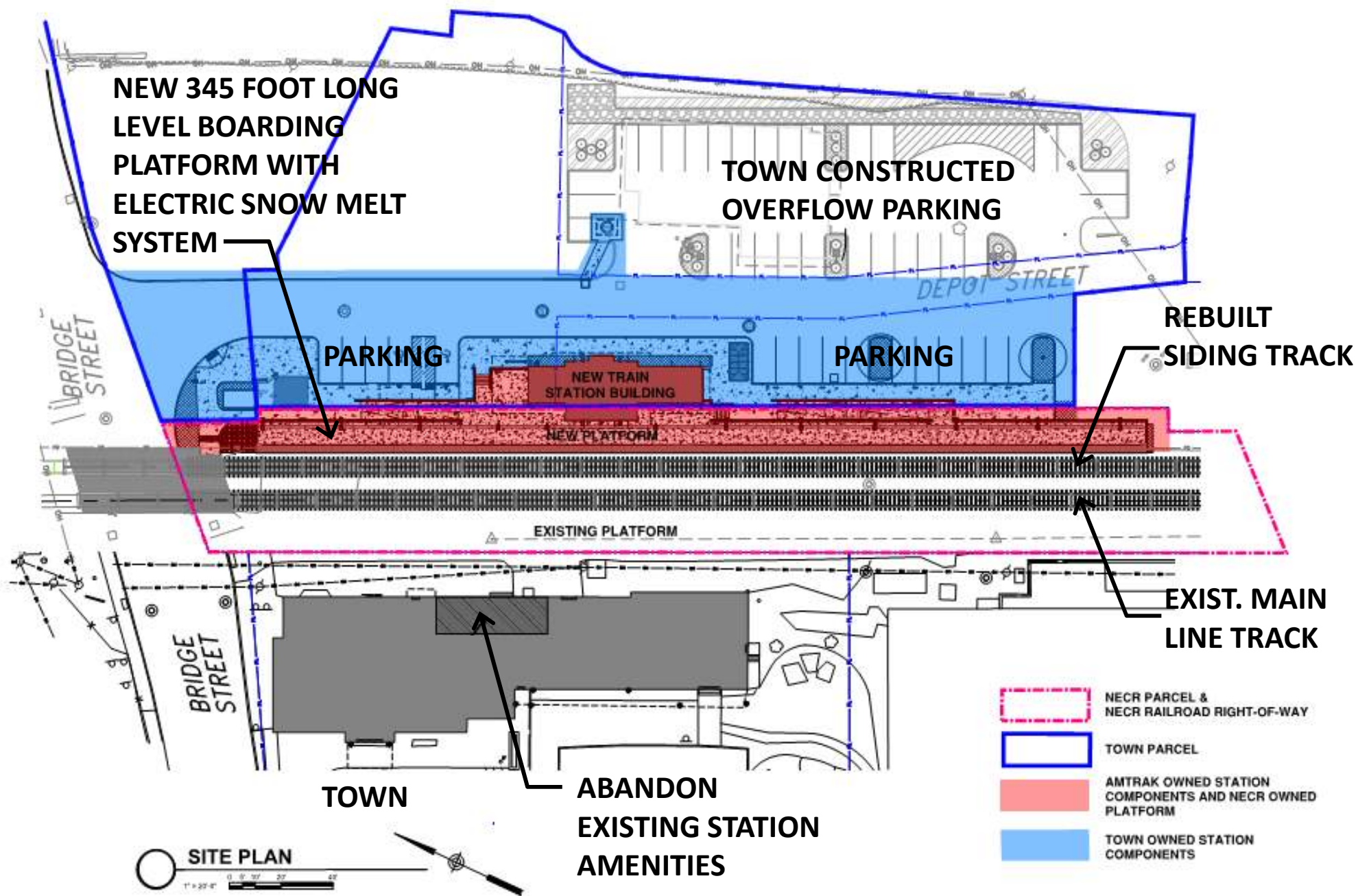
# Brattleboro Station – Scope of Work

- Rebuilding of existing siding track and switches.
- A new 345-foot-long concrete platform at 48 inches above top-of-rail (“level-boarding”) with an electric snow melt system, lighting, signage and drainage  
**VERMONT’S ONLY LEVEL BOARDING STATION**
- An all-new station building with waiting area, restroom, covered outdoor area, engineer room and storage
- ADA parking, paths of travel and bike shelter
- Existing amenities in the basement of the Town’s building will be abandoned once new amenities are completed.



View of site looking south towards the new station building

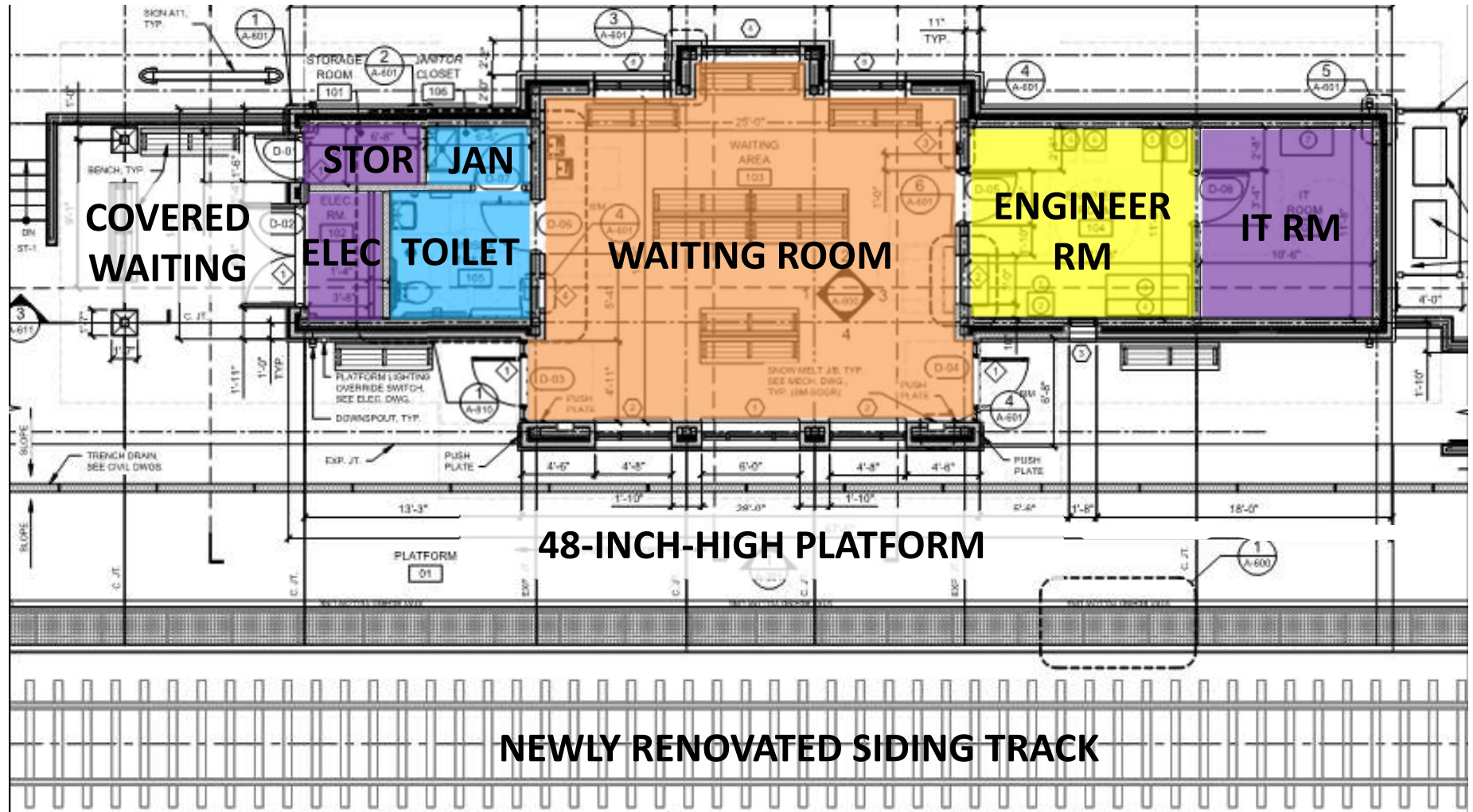
# Brattleboro Station – Proposed Site Plan





# Brattleboro Station – Proposed Station Amenities

PARKING



STATION PLAN

# Brattleboro Station – Renderings



View from the accessible parking spaces looking south to the new station building



# Brattleboro Station – Renderings



View from new 48 inch high platform looking north towards the new station building

# Brattleboro Station – Renderings



View from existing platform looking east towards new station building



View from Town built parking area looking north towards new station building



# Brattleboro Station – Update

- Easement Agreement with Town for station building on Town property was fully executed on March 9, 2023.
- SHPO (Historic) Approvals: In 2023, the project received concurrence that the ADA Improvements at Brattleboro will have No Adverse Effect to historic properties. NEPA approvals were received May 3, 2024.
- The siding track improvements and signal work was completed in November 2023.
- Construction Notice to Proceed was given to Enfield Enterprises, LLC (out of Springfield, MA) on May 20, 2024, site work started in June.
- A public groundbreaking event was held June 24, 2024.
- Substantial Completion is currently projected for January 2026 and Final Completion in February 2026. Winter conditions could impact that schedule.
- The existing amenities in the basement of the Art Museum will be abandoned once the work is completed.