

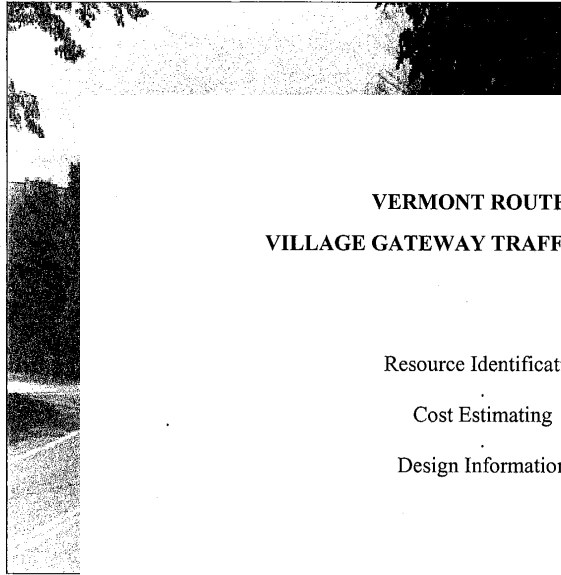
VT Route 30 Corridor Management Plan

WINDHAM REGIONAL COMMISSION
TRANSPORTATION ADVISORY COMMITTEE
JANUARY 11, 2021

Previous VT 30 Studies and Plans

Vermont Route 30 Corridor Management Study

Southern Section – US5 Junction in Brattleboro to VT11 Junction in Winhall



VERMONT ROUTE 30 VILLAGE GATEWAY TRAFFIC CALMING

Resource Identification

Cost Estimating

Design Information

September 2001

W

SVE Associates
PO Box 1818
Brattleboro, VT 05302

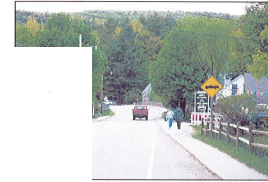
Prepared by:



MULTI-MODAL GATEWAY PLAN for the Town of Brattleboro



VERMONT ROUTE 30 TRAFFIC CALMING PROJECT



Prepared for the

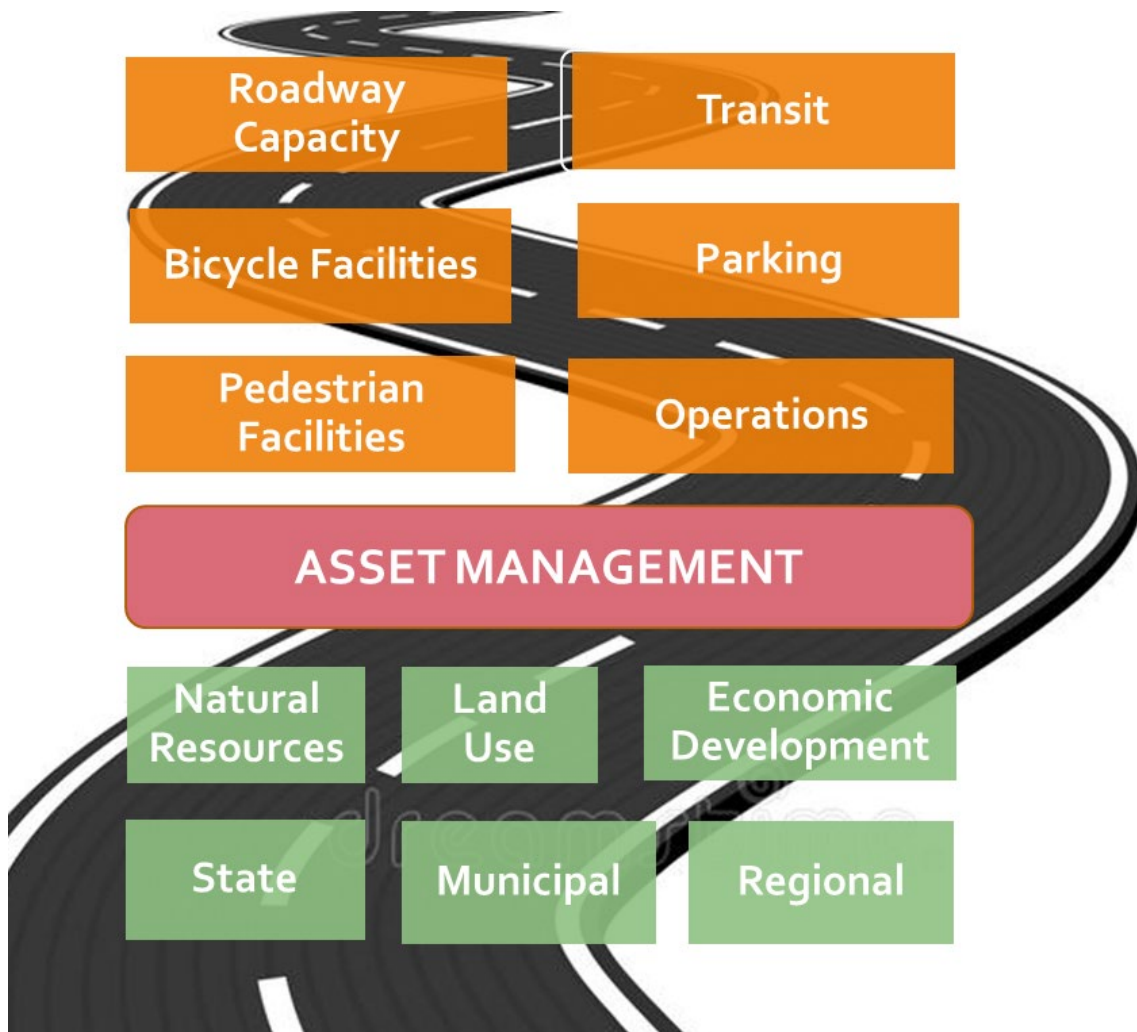


by
Buckhurst Fish & Jacquemart, Inc.
in association with
Stevens & Associates, PC

September 2001

Corridor Management Objectives

1. Identify practical, short-term needs 0-5yrs (also longer-term needs)
2. Coordinate & Leverage Asset Management Investments
3. Integrate into maintenance, projects and permitting
4. Incorporate local needs in a focused and effective way
5. Annual review to monitor progress and changes



Destinations
and regional
facilities

Brattleboro Retreat

Retreat Farm Meadows

West River Valley Trail

Jamaica State Park

Grace Cottage Hospital

Leland and Gray Union Middle & HS

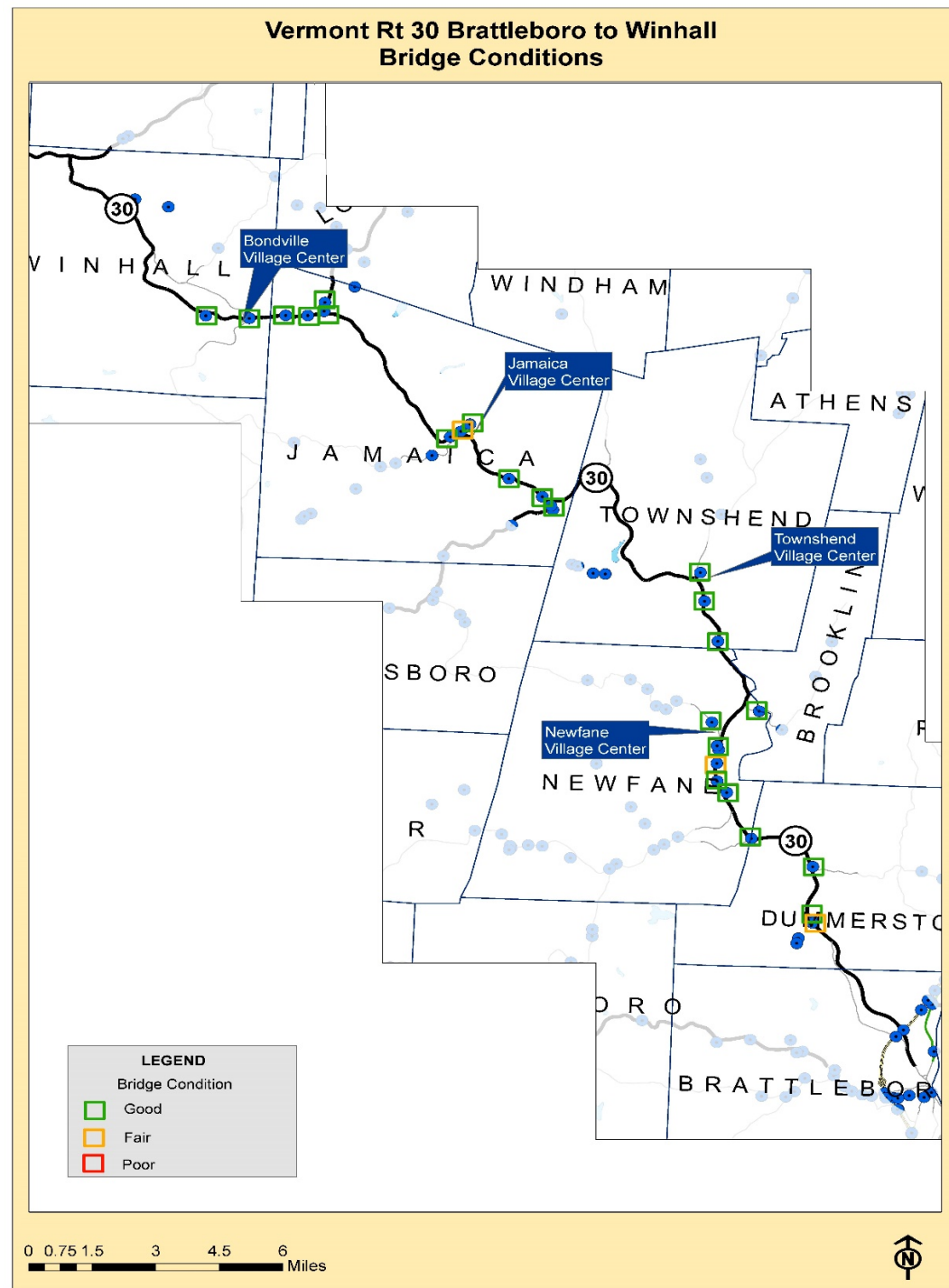
Ski areas (Stratton, Bromley, Snow)

Green Mountain National Forest

Bridge Conditions

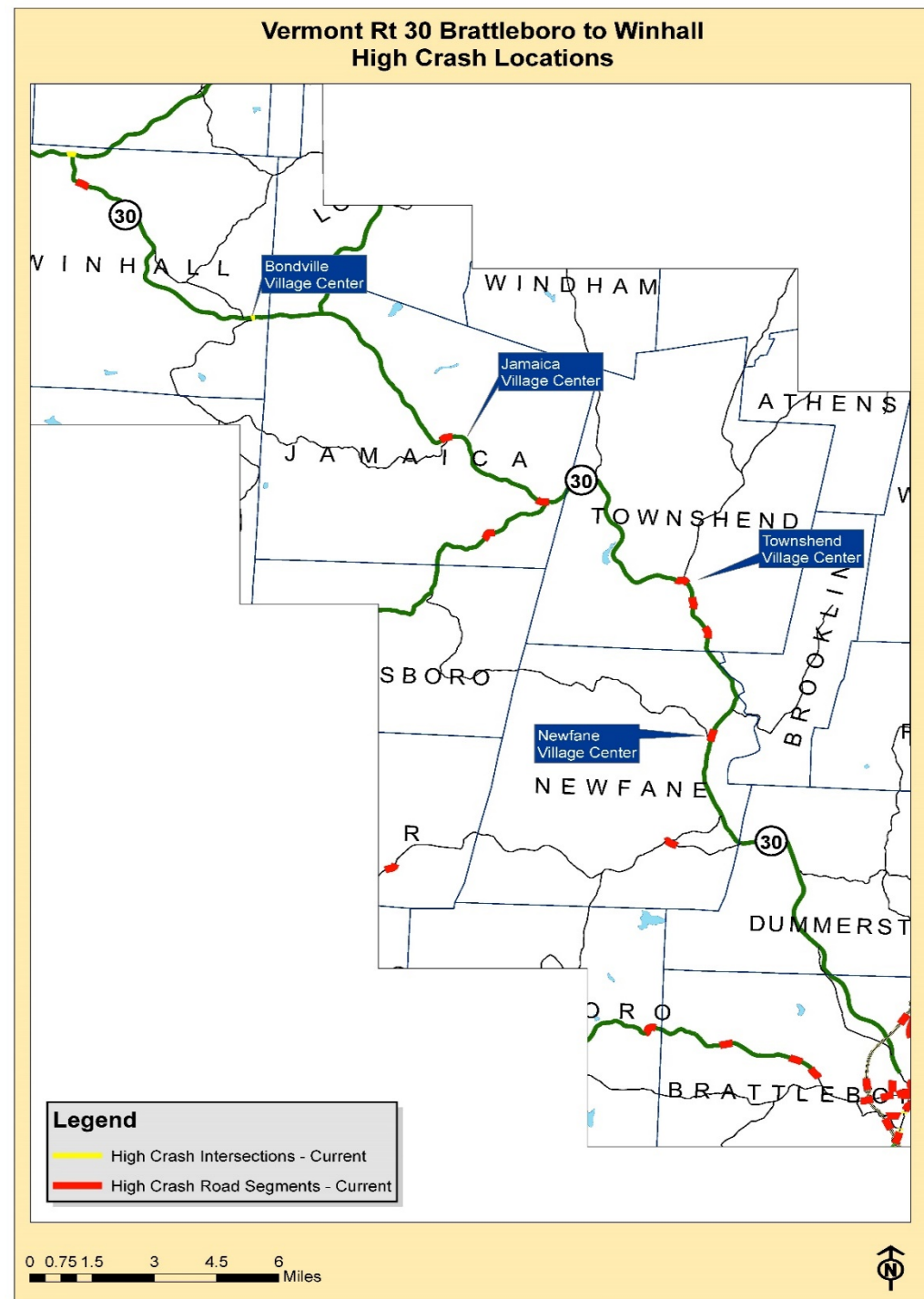
- Only 3 bridges on VT-30 had a FAIR rating; All others were GOOD.
- FAIR ratings attributable to bridge deck conditions.

Bridge #5 Dummerston
Bridge #12 Newfane
Bridge #24 Jamaica



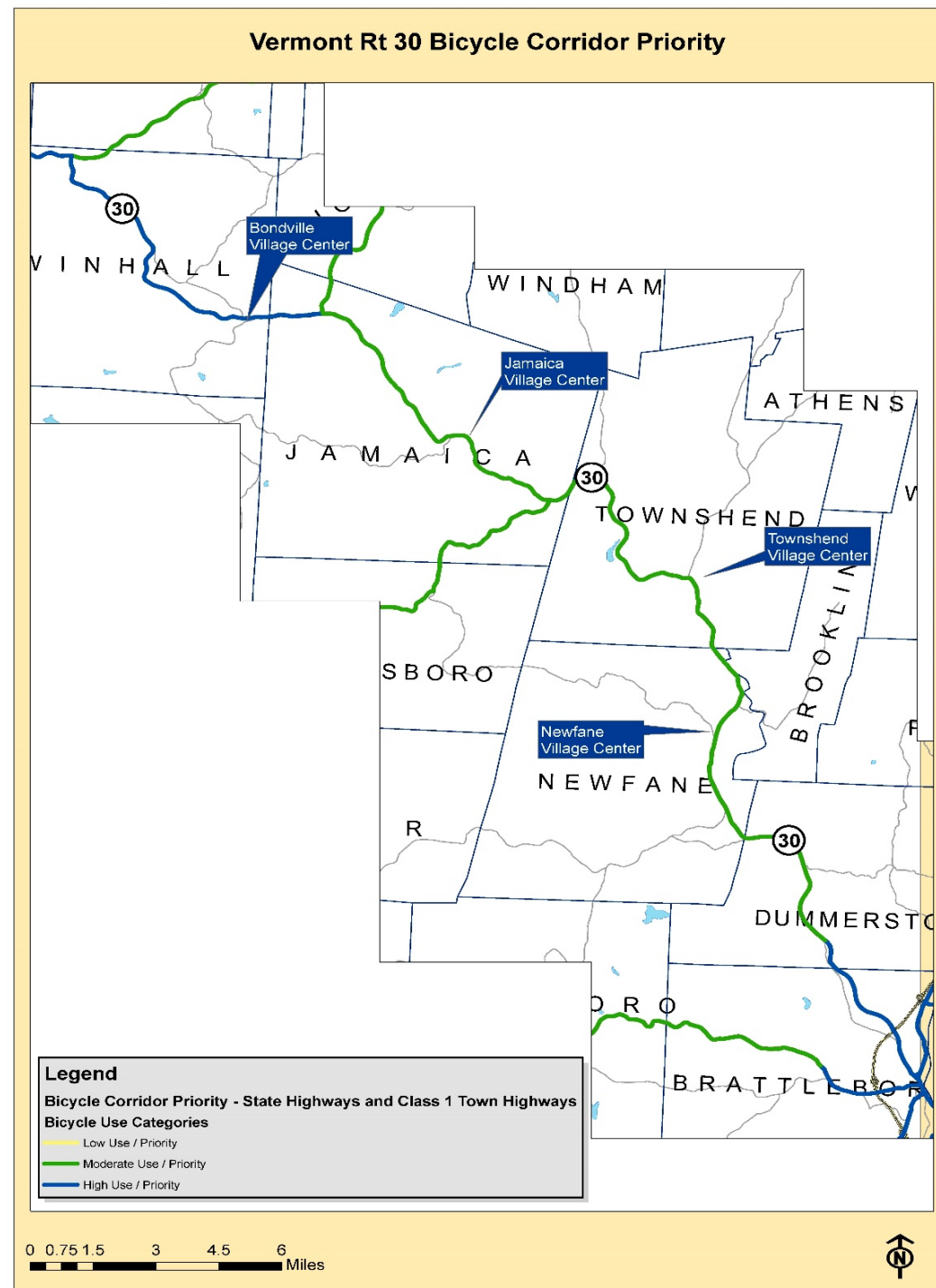
High Crash Locations

- 7 High Crash Location segments along the 40-mile corridor
- 1 High Crash Intersection located at VT-30 and VT-11.
- More than half the High Crash Locations are in the village centers
- Crash summary memo at: <https://vtrans.vermont.gov/planning/projects-programs/corridor-management>



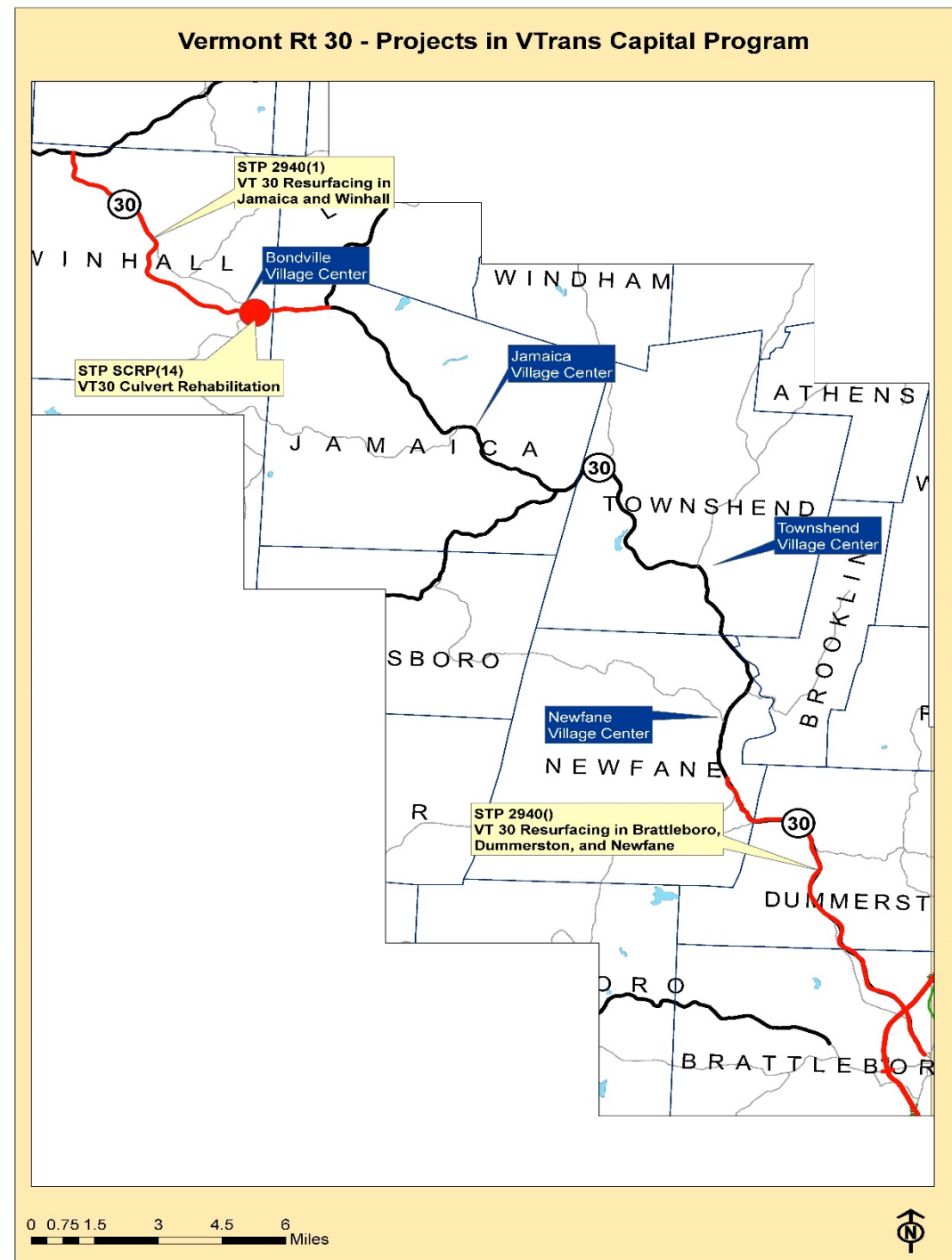
Bicycle Corridor Priority

Moderate to High use along the corridor with particularly significant cyclist presence in Brattleboro and Winhall.



Projects in AOT Capital Program

- STP 2940(1) Resurfacing in Jamaica and Winhall. COMPLETE
- STP SCRP(14) Culvert rehabilitation on VT 30 in Bondville. COMPLETE
- VT 11 approach to VT 30, lane-striping reconfiguration COMPLETE
- STP 015-1(27) Remediation of rock cut #252 in Townshend
- STP 2940(1) VT30 Resurfacing in Brattleboro, Dummerston, and Newfane. Projected Construction: 2022-2023



Themes and Focus Areas

Themes

1. Village Traffic Calming and Pedestrian Safety
2. Public Transit
3. Highway safety

Focus Areas

1. Brattleboro Retreat area
2. Rock River swimming hole

Next Steps – two tracks

Paving Project Design

1. Continued development and design of the Brattleboro-Newfane STP 2940(1) resurfacing project
2. Preliminary plans Summer 2021 – RPC and Municipalities will receive for review and comment

Corridor-Wide

1. Discuss first steps for traffic calming 2021 including dynamic striping (I will facilitate conversation between VTrans District 2, RPC and Munis)
2. Transit Study for VT 30 – contact with Public Transit section re: next steps
3. Rock River swimming hole – discuss options with VTrans District 2

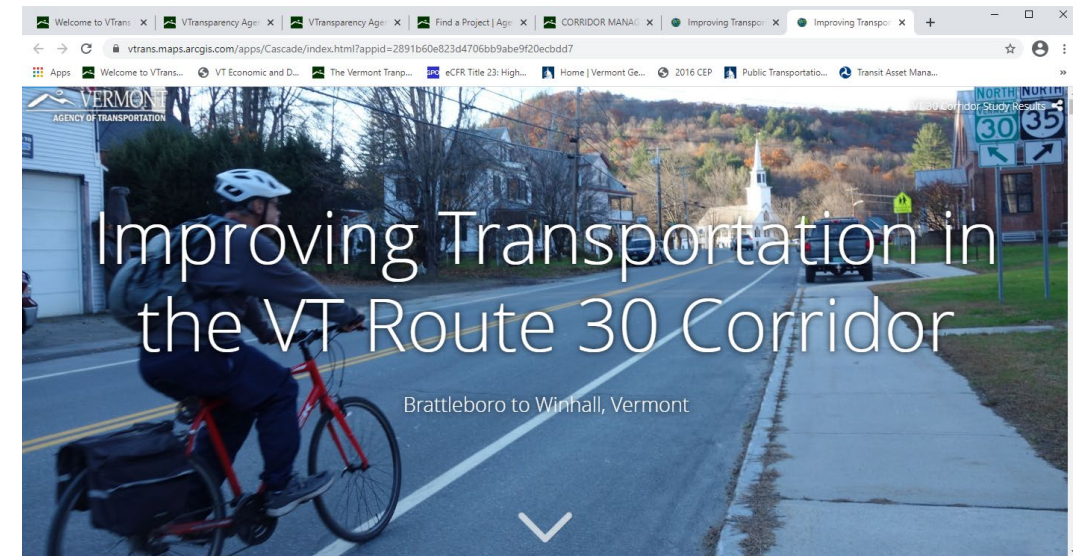
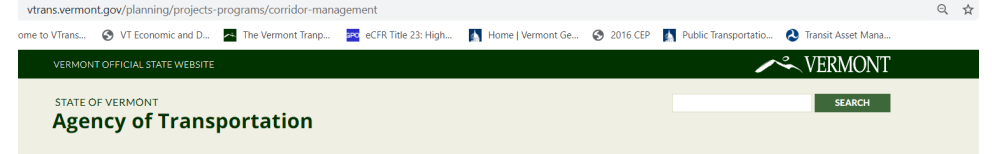
Resources

Corridor Management Webpage

- <https://vtrans.vermont.gov/planning/projects-programs/corridor-management>

Story Map

- [Improving Transportation in the VT 30 Corridor](#)
- The Story Map includes links to VTrans webpages:
 - <https://vtrans.vermont.gov/find-a-project>
 - <https://vtransparency.vermont.gov/pages/bridges2>
 - And more...



Thank you

Contact Information:

Dave Pelletier, Planning Coordinator

802-595-9675

dave.pelletier@vermont.gov

Corridor Management Webpage:

www.vtrans.vermont.gov/planning/projects-programs/corridor-management