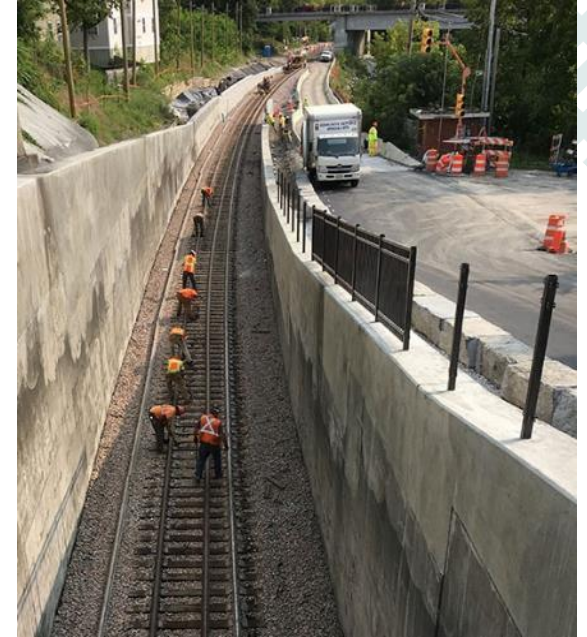




DO YOU LOVE...
drinking beer,
eating cheese,
and receiving your
new skis as much
as we do?



Then the
VERMONT FREIGHT AND RAIL PLANS
matter to you!



Update of Vermont Rail Plan & Vermont Freight Plan

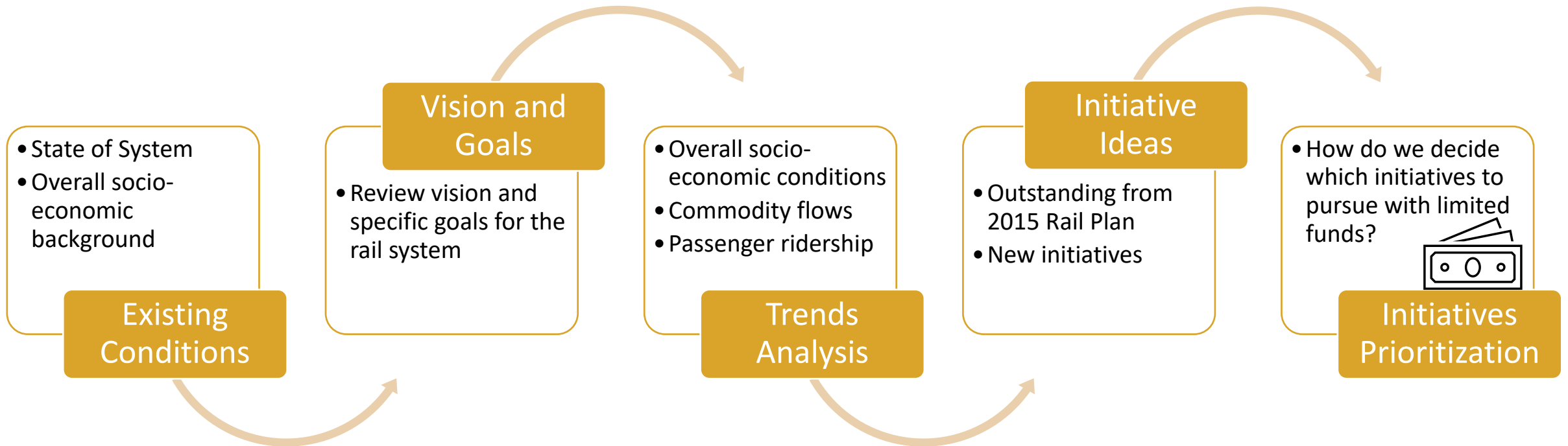
Vermont Town Hall – October 6, 2020



Background & Goals

- Federal Railroad Administration (FRA) requires a State Rail Plan at minimum every 4 years to remain eligible for certain types of rail grants
 - Update of 2015 Rail Plan will include Freight/Intercity passenger rail service
- Federal Highway Administration (FHWA) requires a State Freight Plan every 5 years in order to obligate Freight Formula funds
 - Update of 2012 Freight Plan will cover all modes: rail, highway, air, & water

Rail Plan Elements

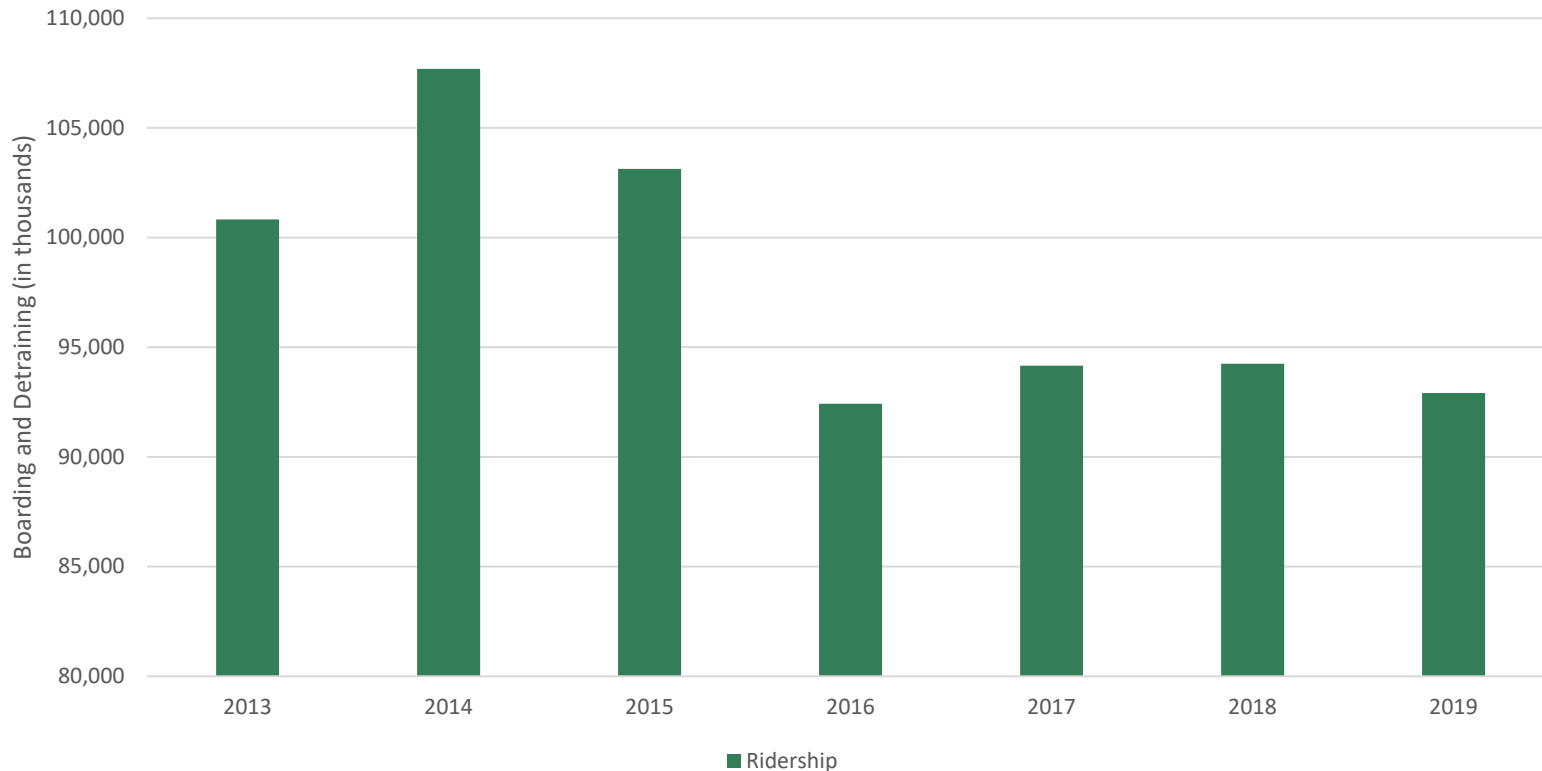


Initiatives can be projects, but also new computer systems, signal updates, improved coordination, etc. that increase efficiency. These operational and administrative efforts are particularly important given limited funding.

Passenger Rail Trends



Passenger Rail Ridership



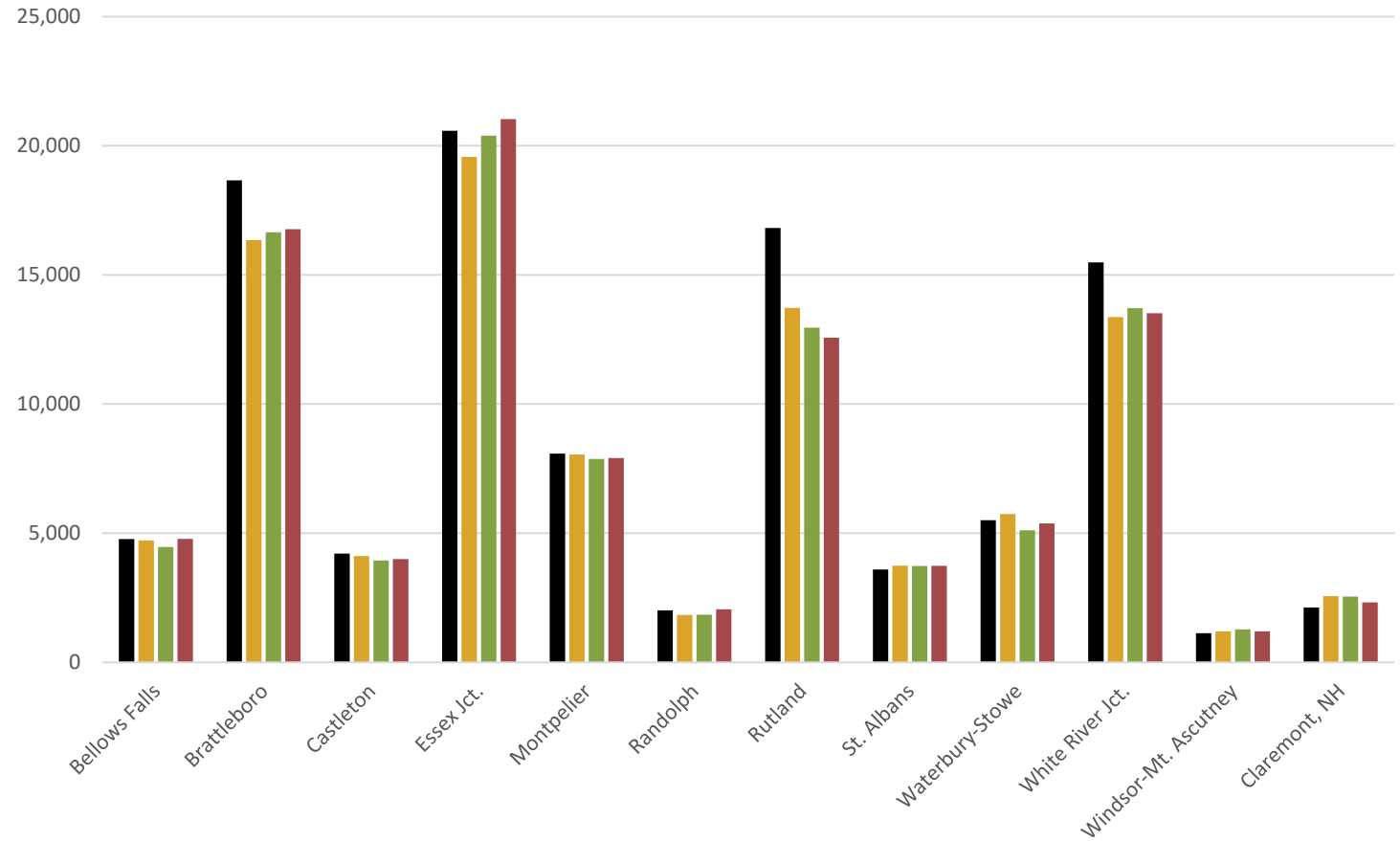
- Overall decline in VT Amtrak ridership since FY2013
 - Ridership has steadily risen in NY and MA over the same time.
 - NH growing ridership since a low in 2015

Passenger Rail Ridership by Station

- Essex Junction, Brattleboro, Rutland, and White River Junction = 67% of VT ridership
 - Ridership at Brattleboro, Rutland, and White River Junction are down since 2013

Top 3 city pairs by ridership and revenue

- 1) Rutland – NYC
- 2) Brattleboro – NYC
- 3) Essex Junction - NYC



■ 2013 ■ 2017 ■ 2018 ■ 2019

Data for 2014-2016 omitted for space

Freight Rail Trends



Why Does Freight Rail Matter?

INDUSTRY SECTORS



MODES



SHIPMENT CHARACTERISTICS

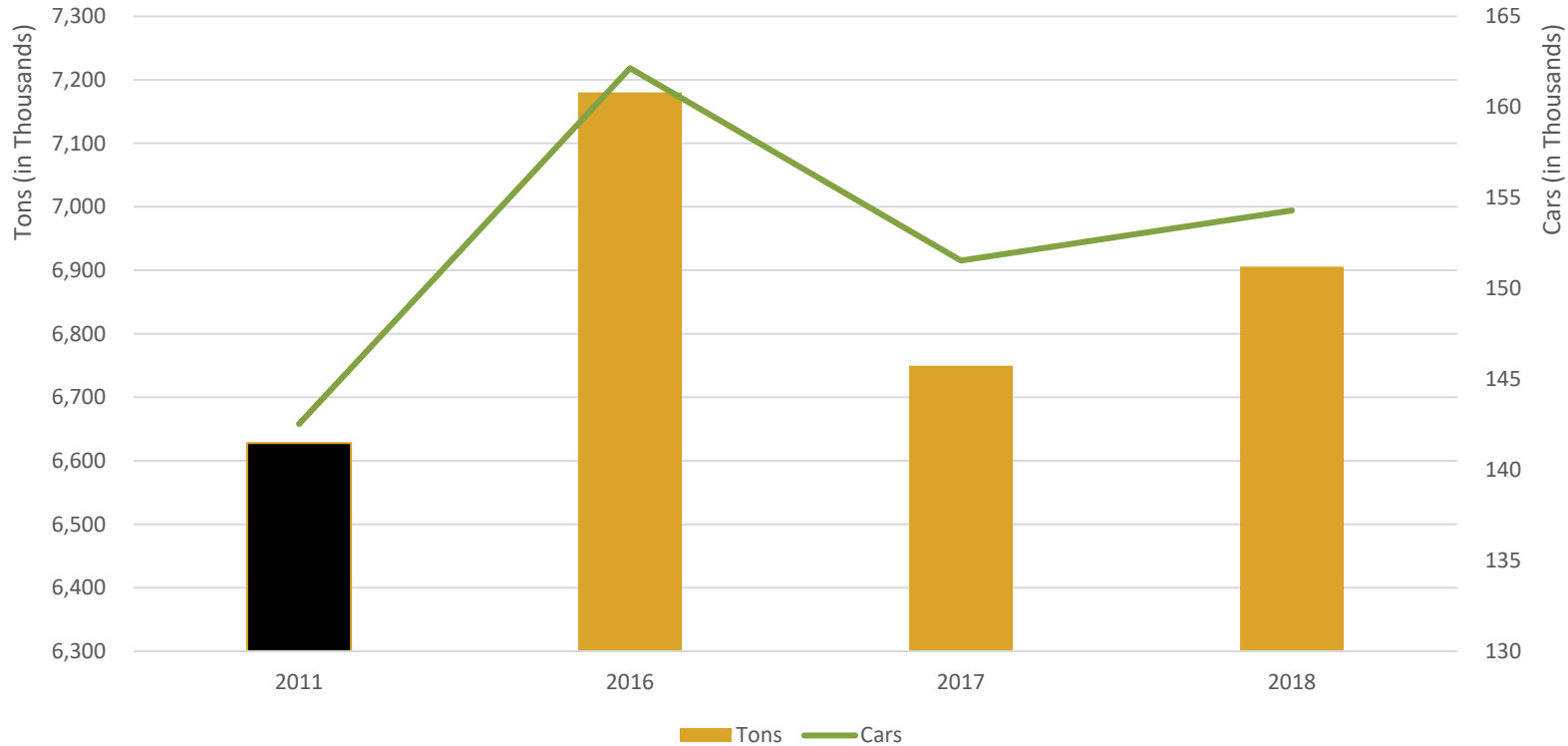


HOW DO WE MOVE THE AGRICULTURE INDUSTRY ONE RAIL CAR AT A TIME?

- ENOUGH WHEAT** FOR 258,000 LOAVES OF BREAD
- ENOUGH CORN** FOR 480,000 BAGS OF FRITOS®
- ENOUGH SOYBEANS** FOR 415,000 POUNDS OF TOFU
- ENOUGH BARLEY** FOR 94,000 GALLONS OF BEER

AAR.org @AAR_FreightRail ASSOCIATION OF AMERICAN RAILROADS

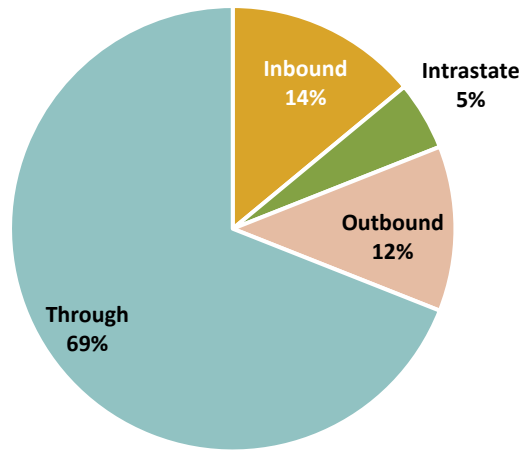
Freight Rail Overview



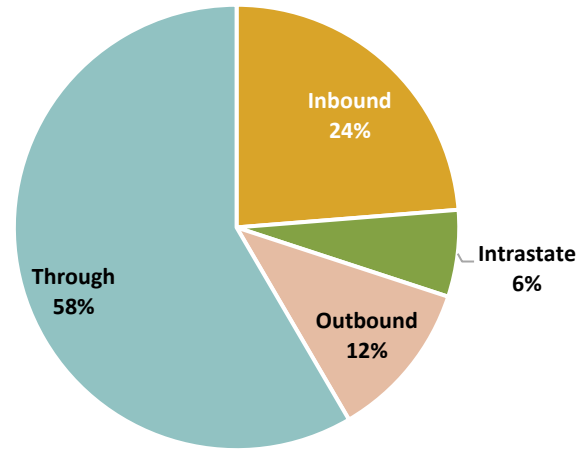
- 4% growth in tons, 8% growth in carloads since 2011
 - Data not available 2012-2015 (STB Confidential Waybill Sample)

Freight Rail By Direction

2011 Tons



2018 Tons

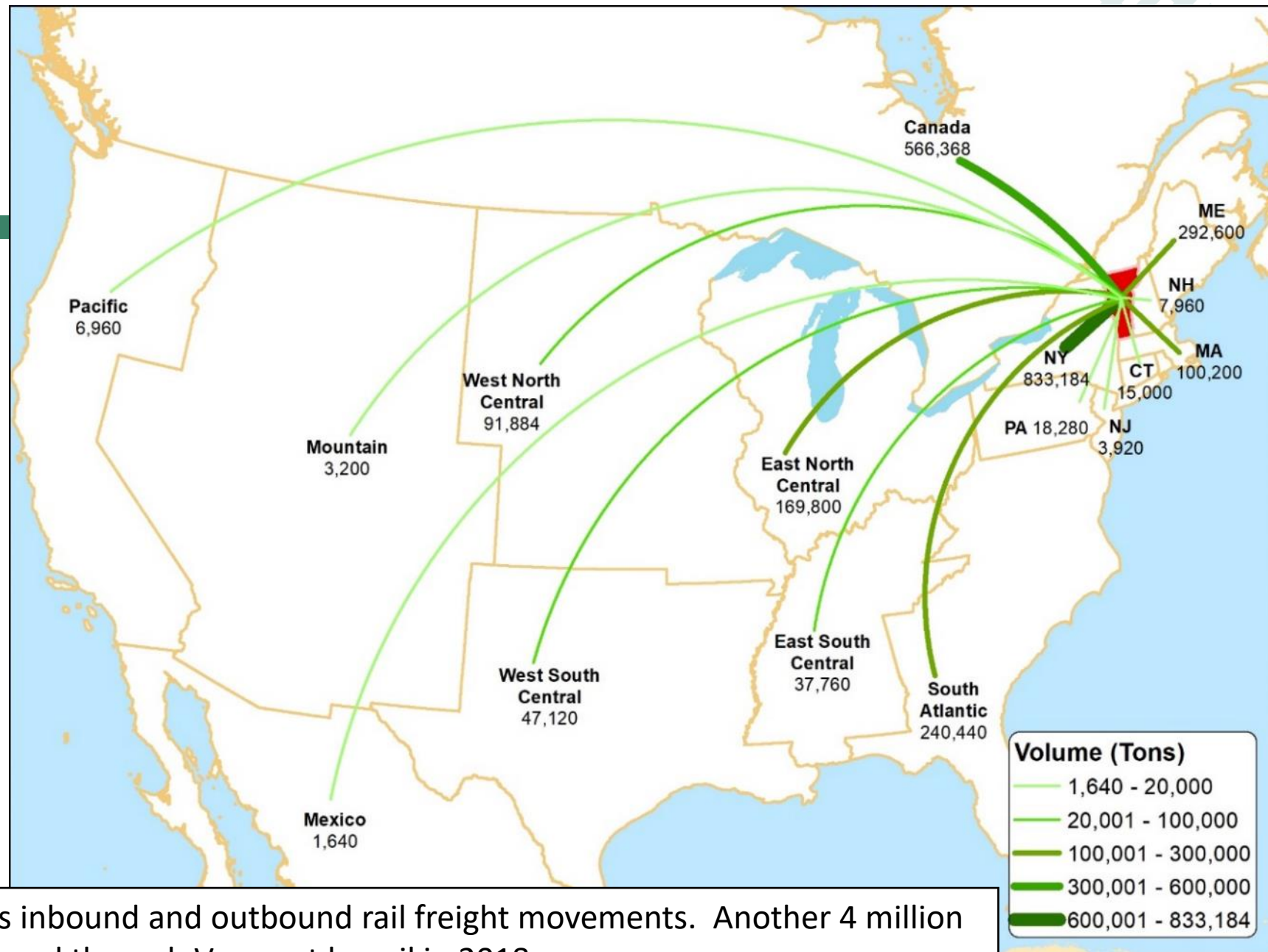


New York (inbound) & Maine (outbound) are top trading partners



Freight Rail Trading Partners

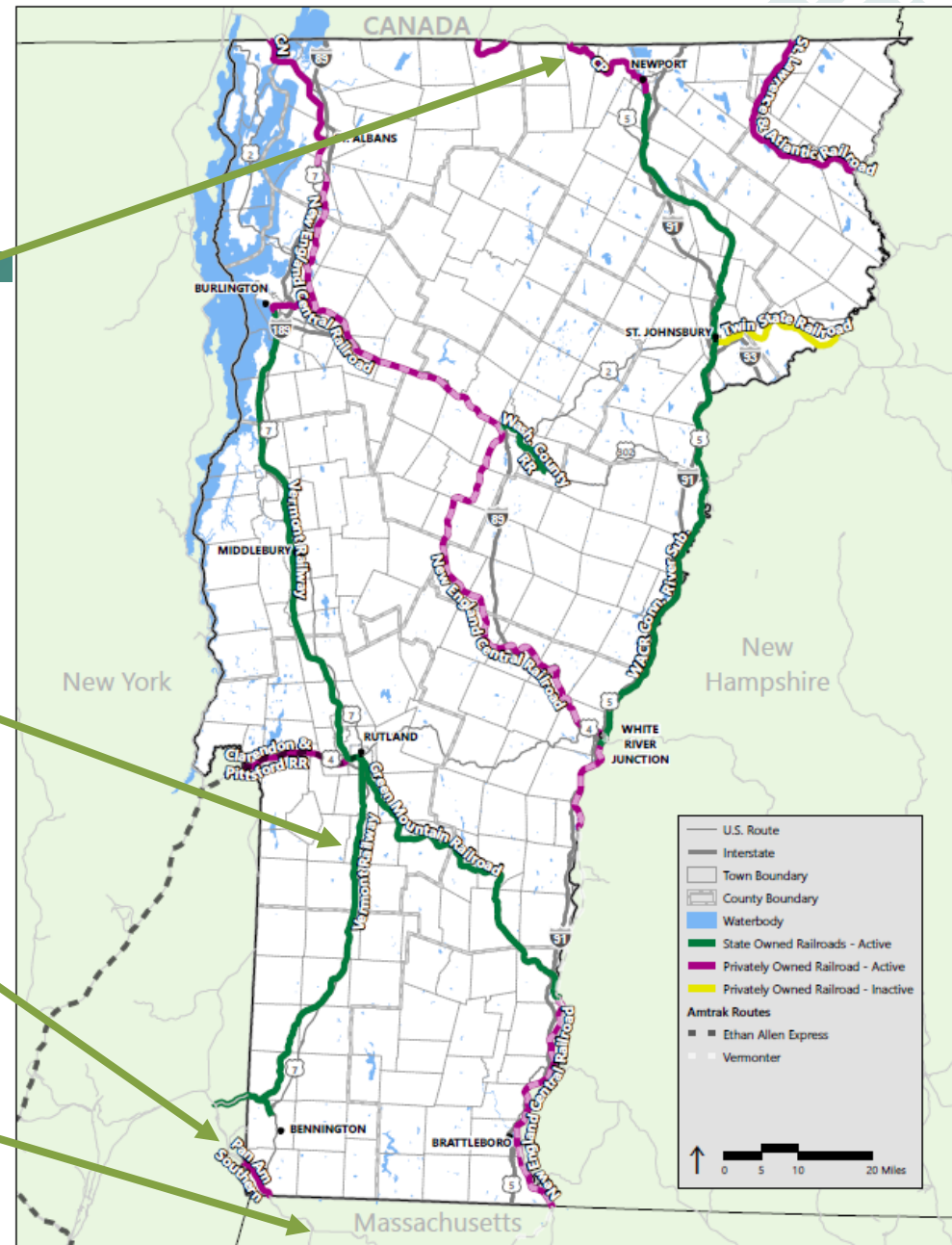
- Vermont is linked worldwide by short line railroads and then Class I rail networks.
- Tonnage inbound to Vermont increased from 14% in 2011 to 24% in 2018.



Note: Map only shows inbound and outbound rail freight movements. Another 4 million tons (58% of total) moved through Vermont by rail in 2018

Notable System Changes & Initiatives

- Central Maine & Quebec acquired by Canadian Pacific
- Work on Western Corridor rail bridges (Hoosick Junction to Rutland) – 2018 BUILD Grant
- Pending sale of Pan Am Railways
- Hoosac Tunnel Closure
 - February – early April 2020
 - Re-route possible because of resilient freight rail network

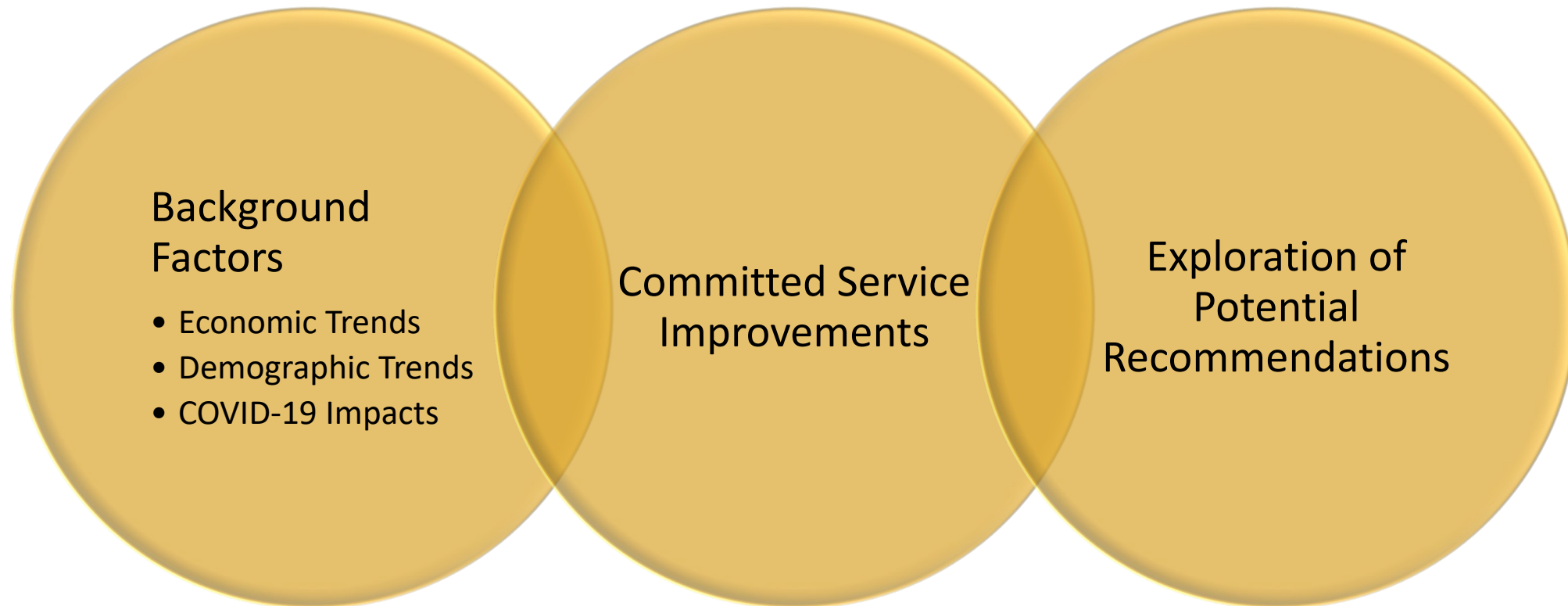


Next Steps



Passenger Rail Forecasting

- Forecast Horizon: 20 years




Online Web Map

- **Link:** <http://bit.ly/VTFreightRailMap>
- **Purpose:**
 - Collect stakeholder input on issues and potential initiatives
 - Provide valuable information
- **What would be of most interest to stakeholders?**
 - Rail-related initiatives and status
 - Vertical clearance issues
 - Transload locations
 - Amtrak station ADA features
 - Freight-related employment data
 - Other?

Update of Vermont Rail Plan and Vermont Freight Plan

About **Add New Idea / Issue** User Input >

Share your feedback!

See existing conditions using the layers button () on the top left of the map. Add a note, including the location, and drop a pin on the map below (optional). You may also upload a photo to illustrate your input. If you have a general comment or question about the planning process, scroll down.

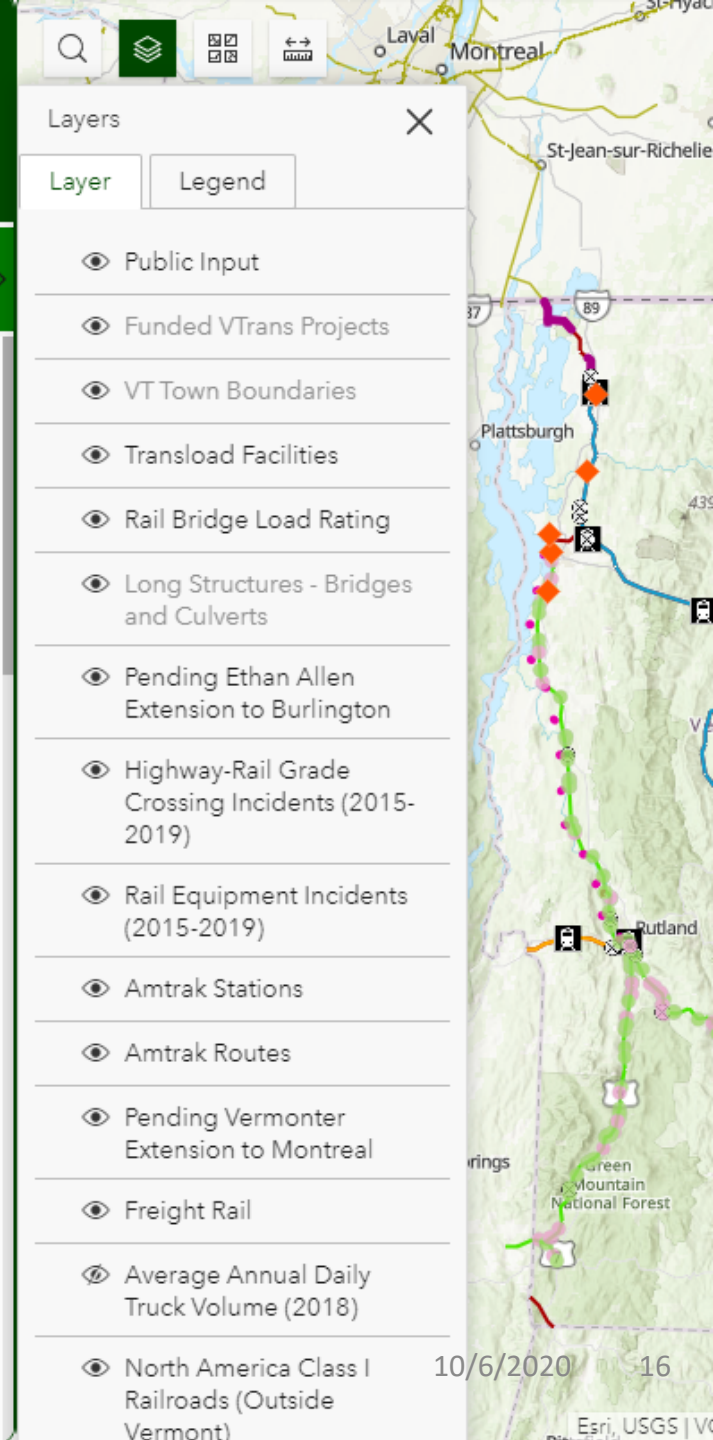
What is the issue or idea?

(e.g. an issue with a section of rail line, rail crossing, rail passenger issue, or a freight issue for another mode of travel)

Please describe the route or location:

(e.g. a rail facility, road section that crosses a rail line, intermodal site, rail passenger station, or truck movement issue)

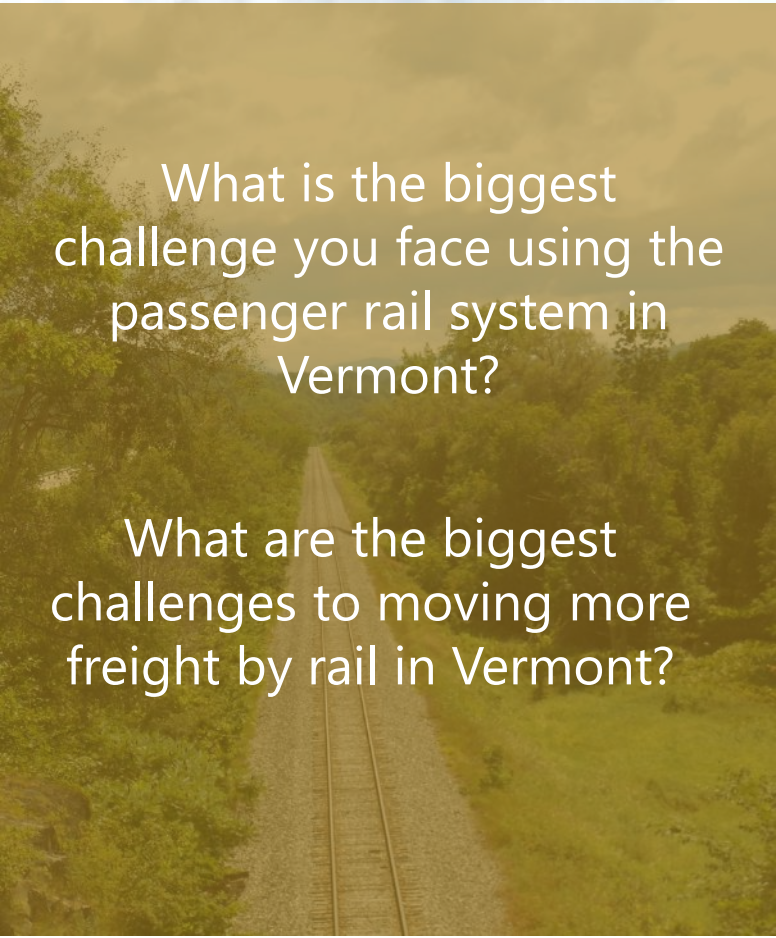
Mark it on the map:



Discussion




Discussion Questions



What is the biggest challenge you face using the passenger rail system in Vermont?

What are the biggest challenges to moving more freight by rail in Vermont?



What NON-RAIL strategies could Vermont use to help improve rail use in the State (both passenger and freight)?

- *Land use/zoning changes
- *Highway connections
- *Transit connections
- *Advertising/marketing

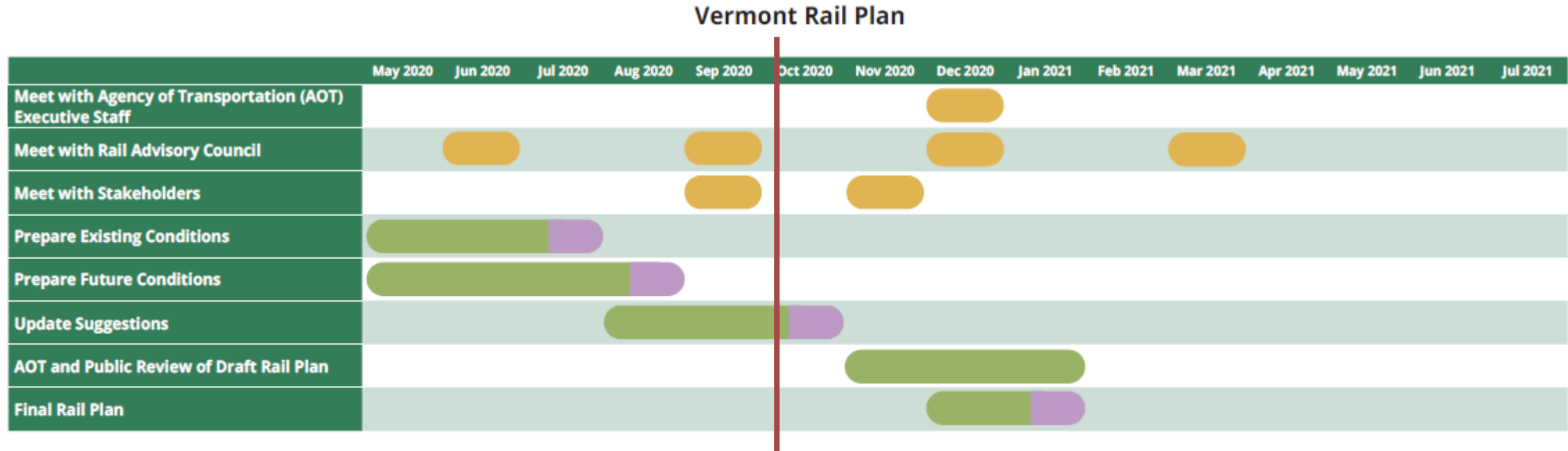


How do you think COVID will impact the future of rail in Vermont?

Additional Information



Vermont Rail Plan Schedule



Legend

- Indicated work is underway, progress toward a task deliverable
- Outreach activity
- Rail plan deliverable

Additional Information

- For more information on the rail and freight plans including
 - Newsletters
 - Data Trends Summary
 - Draft Existing Conditions Technical Memo
 - Online map with information and stakeholder feedback tool
 - Recording of full presentation and slides
- Rail Plan: <https://vtrans.vermont.gov/rail/reports>
- Freight Plan: <https://vtrans.vermont.gov/planning/freight>

Thank You

For more information on the Vermont Rail Plan Update, visit vtrans.vermont.gov/rail/reports or contact Zoe Neaderland at Zoe.Neaderland@vermont.gov or (802) 793-2778.

For more information on the Vermont Freight Plan Update, visit vtrans.vermont.gov/planning/freight or contact Dave Pelletier at Dave.Pelletier@vermont.gov or (802) 595-9675.