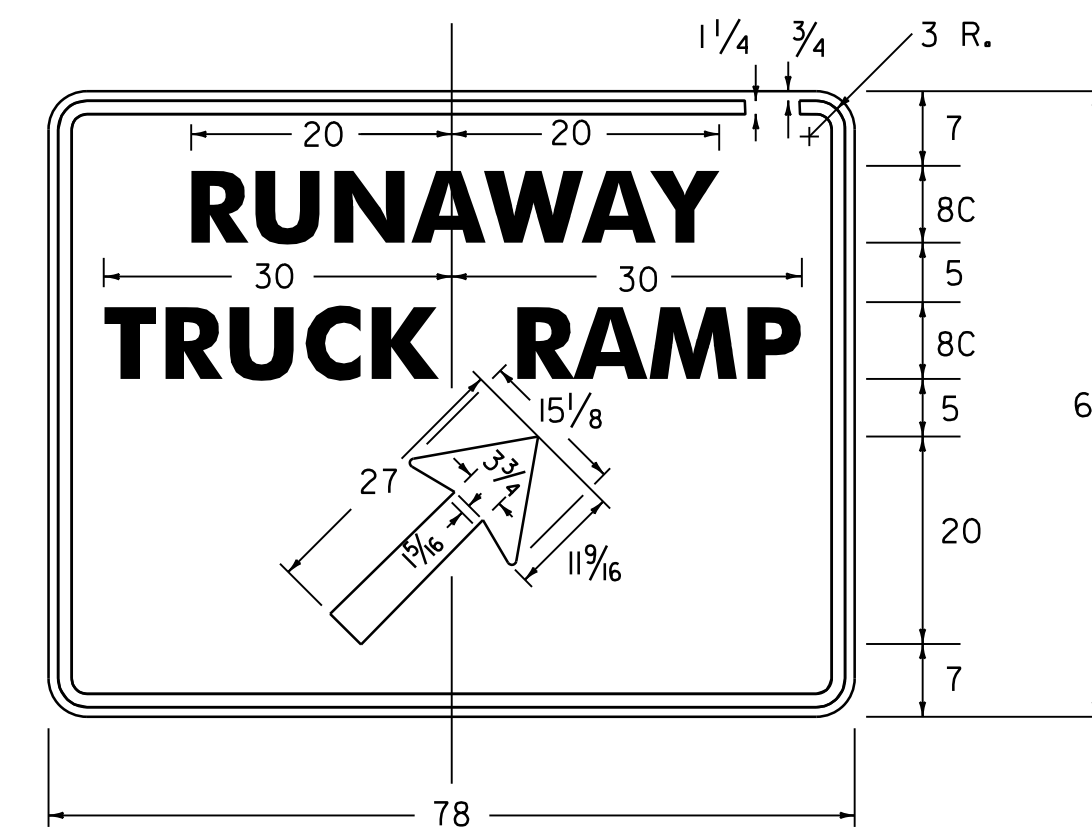


ALL SIGN DIMENSIONS ARE IN INCHES



**COLORS**

ALL THE WARNING SIGNS SHOWN ON THIS SHEET SHALL HAVE BLACK TEXT AND SYMBOLS ON REFLECTORIZED YELLOW BACKGROUND EXCEPT AS OTHERWISE NOTED. THE COLORS SHALL CONFORM WITH THE COLORS ADOPTED BY THE AMERICAN ASSOCIATION OF STATE HIGHWAY AND TRANSPORTATION OFFICIALS AND APPROVED BY THE DEPARTMENT OF TRANSPORTATION, FEDERAL HIGHWAY ADMINISTRATION.

**MATERIALS**

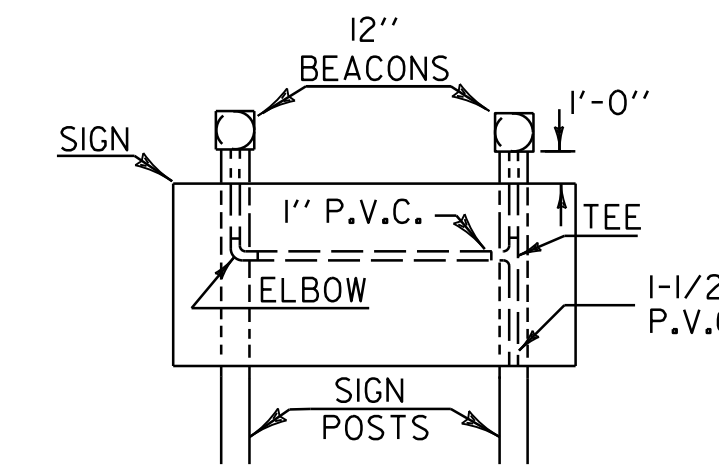
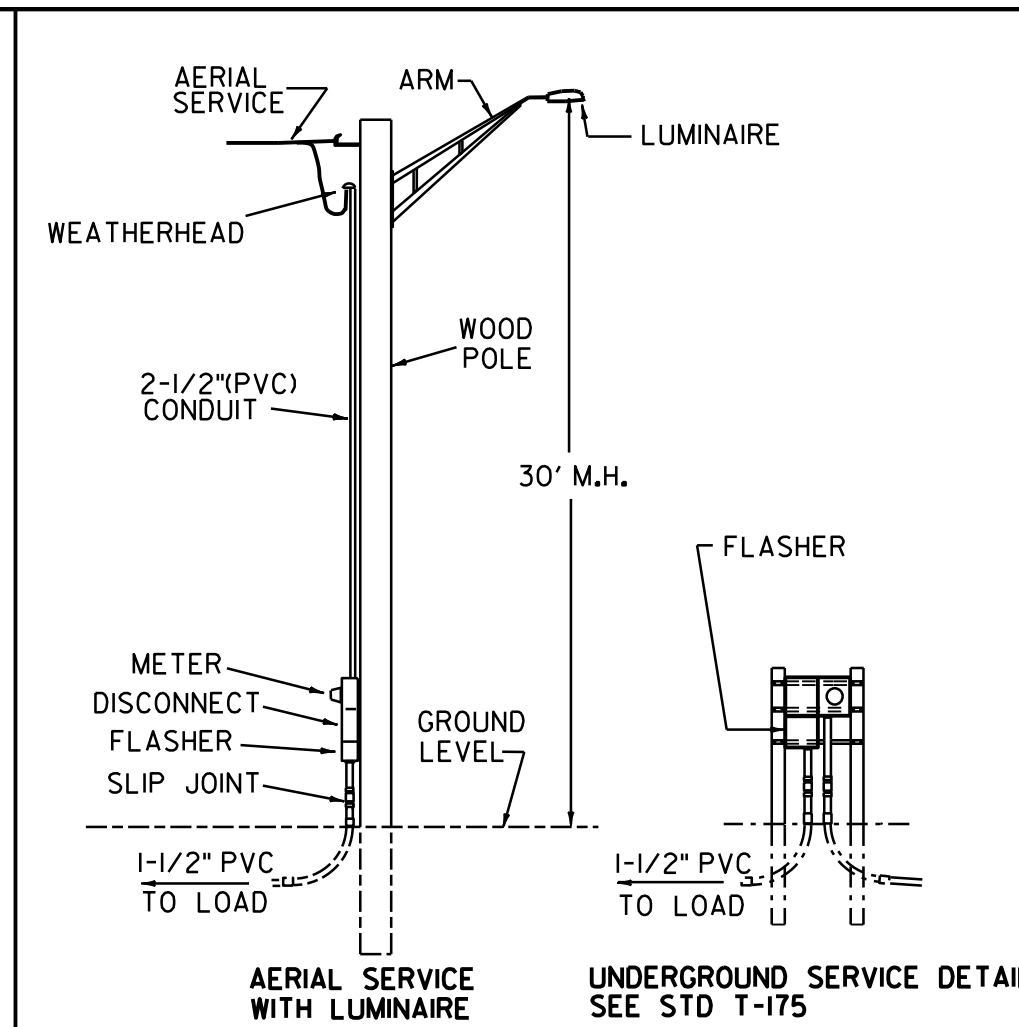
THE SIGN BASE MATERIALS USED FOR REGULATORY SIGNS SHOWN ON THIS SHEET MUST CONFORM TO SECTION 675 OF THE LATEST VERSION OF THE VAOT STANDARD SPECIFICATIONS FOR CONSTRUCTION.

**TEXT DESIGN**

LETTERS, DIGITS, SYMBOLS, SPACINGS, AND TEXT DIMENSIONS SHALL CONFORM WITH THE STANDARD ALPHABETS AND DESIGNS PRESCRIBED IN THE "MANUAL ON UNIFORM TRAFFIC CONTROL DEVICES".

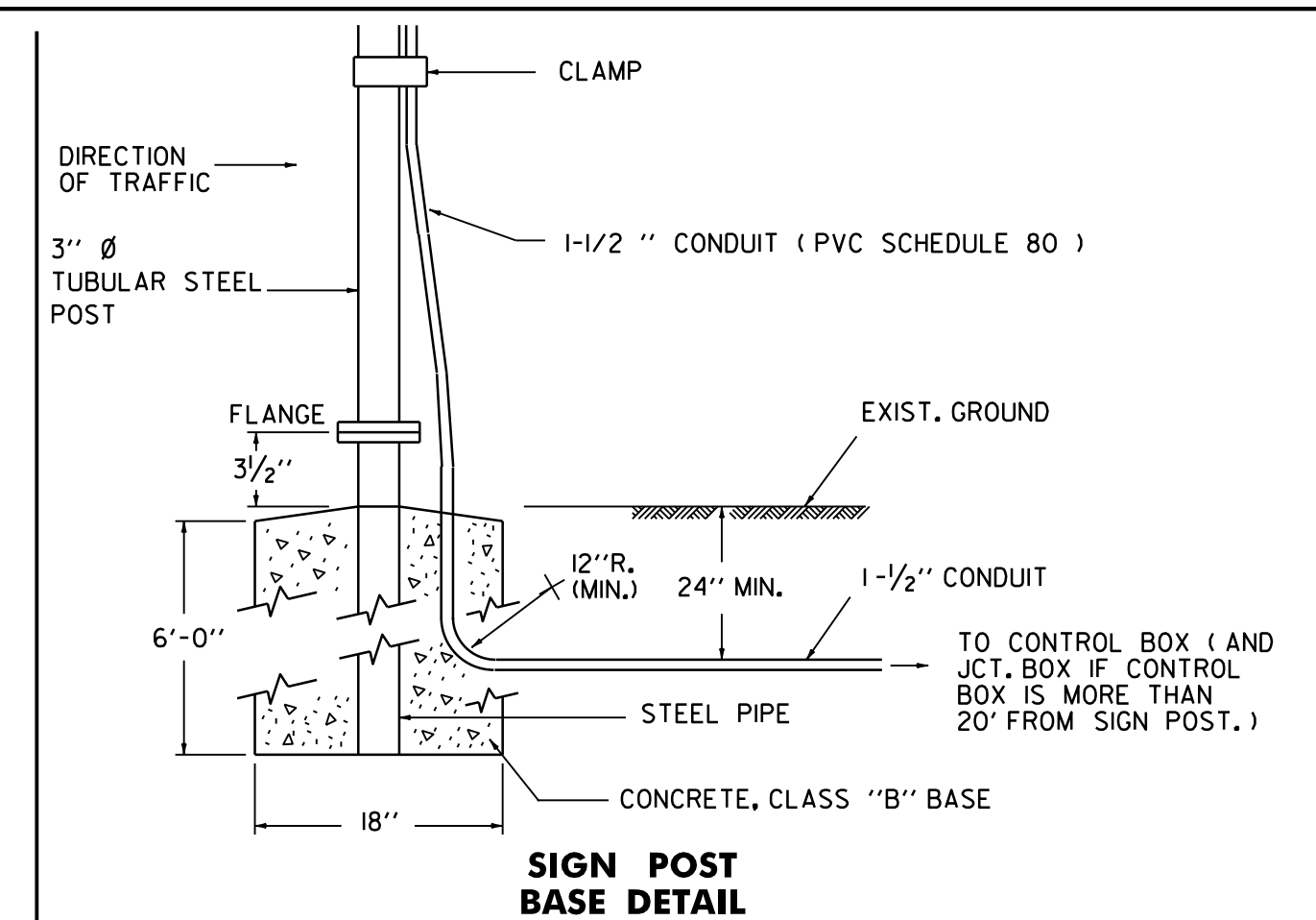
**SPECIFICATIONS**

WARNING SIGNS SHALL MEET THE VERMONT STANDARD SPECIFICATIONS FOR "TRAFFIC SIGNS".



**CONDUIT DETAILS BETWEEN BEACONS**

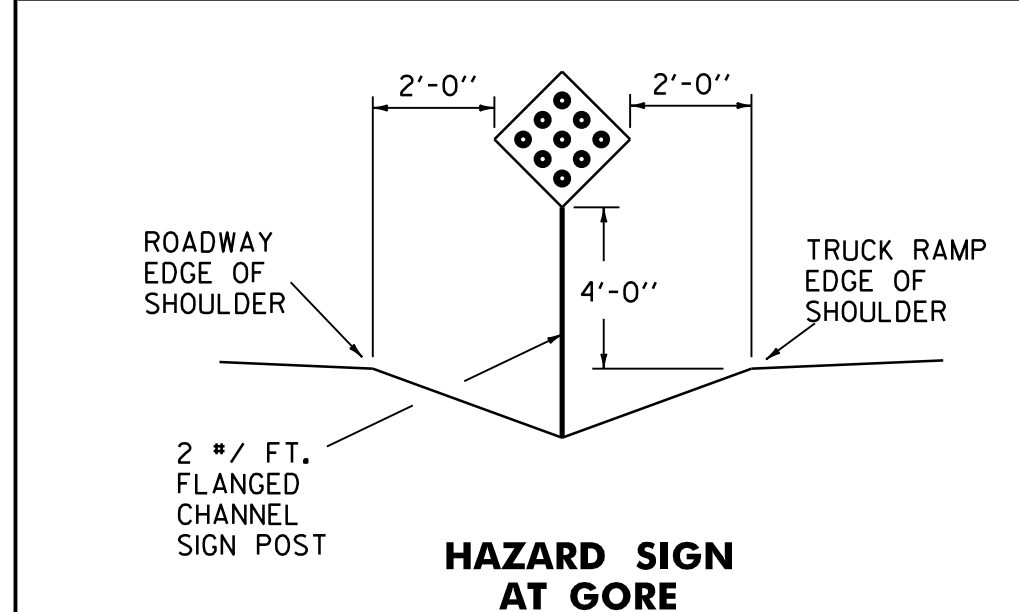
(SIGN SHOWN FACING TRAFFIC)



**SIGN POST BASE DETAIL**

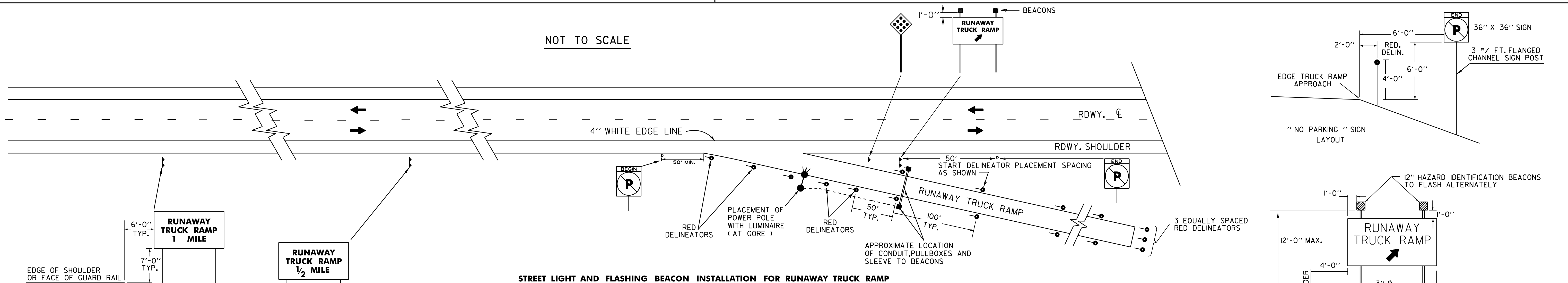
**FLASHING BEACON NOTES:**

1. POWER MAY COME FROM THE SAME SOURCE AS A TRAFFIC SIGNAL AND/OR STREET LIGHT.
2. THE FLASHER UNIT SHALL BE A ONE CIRCUIT FOR A SINGLE BEACON INSTALLATION AND A TWO CIRCUIT FOR A TWO BEACON INSTALLATION, AND SHALL INCLUDE A RADIO INTERFERENCE FILTER.
3. BATTERY OPERATED FLASHERS WILL NOT BE ALLOWED.
4. BOTTOM OF BEACON(S) SHALL BE A MINIMUM OF 8'-0" AND A MAXIMUM OF 12'-0" ABOVE EDGE OF PAVEMENT.
5. FOR URBAN AREA PLACEMENT SEE APPROPRIATE STANDARD SHEETS.
6. THE CONTRACTOR SHALL SUPPLY AND INSTALL THE INDICATED EQUIPMENT AND HARDWARE: BEACONS, 3" Ø TUBULAR STEEL POSTS AND FOUNDATIONS, WIRE (#14 AWG. COPPER - MINIMUM), METER SOCKET, DISCONNECT CABINET WITH APPROPRIATE CIRCUIT BREAKERS, CONCEIT, POLE RISER WITH WEATHER HEAD, POWER DROP STANCHION, JUNCTION BOX(ES) AND ALL OTHER MISC. MATERIALS AND HARDWARE TO MAKE THE BEACONS OPERATIONAL
7. A CLAMPING DEVICE AS APPROVED BY THE ENGINEER SHALL BE USED TO ATTACH THE CONDUIT TO THE SIGN POST(S).
8. PAYMENT FOR THE ABOVE INSTALLATION(S) SHALL BE AS FOLLOWS: BEACON(S), SIGN(S) AND POST(S) SHALL BE PAID UNDER THEIR APPROPRIATE ITEM NUMBERS).



**HAZARD SIGN AT GORE**

NOT TO SCALE



**STREET LIGHT AND FLASHING BEACON INSTALLATION FOR RUNAWAY TRUCK RAMP**

INSTALL A WOOD POLE OF SUFFICIENT LENGTH TO MOUNT A LUMINAIRE WITH A 30 FOOT MOUNTING HEIGHT.  
 THE LOCATION OF THIS POLE SHALL BE BEYOND THE CLEAR ZONE OF THE THROUGH LANE AND AT LEAST 10 FEET OFF THE EDGE OF PAVEMENT OF THE TRUCK ESCAPE RAMP. LIGHT POLE TO BE SET APPROXIMATELY AT THE GORE AREA OF THE THRU WAY AND THE TRUCK ESCAPE RAMP.  
 INSTALL A RAIN TIGHT ENCLOSURE ON THIS POLE (OPTION WHEN PERMITTED) WITH METER SOCKET, FLASHER AND AT LEAST TWO CIRCUIT BREAKERS AND MAIN DISCONNECT FOR STREET LIGHT AND FLASHING BEACONS.  
 THE LUMINAIRE TO BE EITHER A 150 WATT HIGH PRESSURE SODIUM OR A 250 WATT MERCURY VAPOR WITH CUT-OFF OPTICS, TYPE III DISTRIBUTION AND BRACKET ARM OF SUFFICIENT LENGTH SO LUMINAIRE IS OVER PAVED EDGE OF TRUCK ESCAPE RAMP.

THE ELECTRICAL CIRCUITRY FOR THE FLASHING BEACONS SHALL BE RUN UNDERGROUND FROM THE ABOVE MENTIONED POWER DROP POLE TO THE NEAR POLE OF THE FLASHING BEACON INSTALLATION. USE 1-1/2" INCH CONDUIT, STEEL OR P.V.C. AND TRENCH OR JACK A 6" SLEEVE UNDER THE TRUCK ESCAPE RAMP WITH NECESSARY PULLBOX(ES) AS PER PLAN.

PAYMENT FOR THE ABOVE INSTALLATION OF THE STREET LIGHT AND BEACONS SHALL BE PAID AS SEPARATE ITEMS.

REV.	DATE	DESCRIPTION
0	AUG. 2, 1988	ORIGINAL APPROVAL
1	AUG. 8, 1995	REVISED LUMINAIRE DETAIL AND MISC. NOTES
2	JUN. 25, 2024	MINOR REVISIONS, BORDER UPDATE

OTHER STANDARDS REQUIRED:

**RUNAWAY TRUCK RAMP SIGN DETAIL SHEET**



STANDARD  
E-129