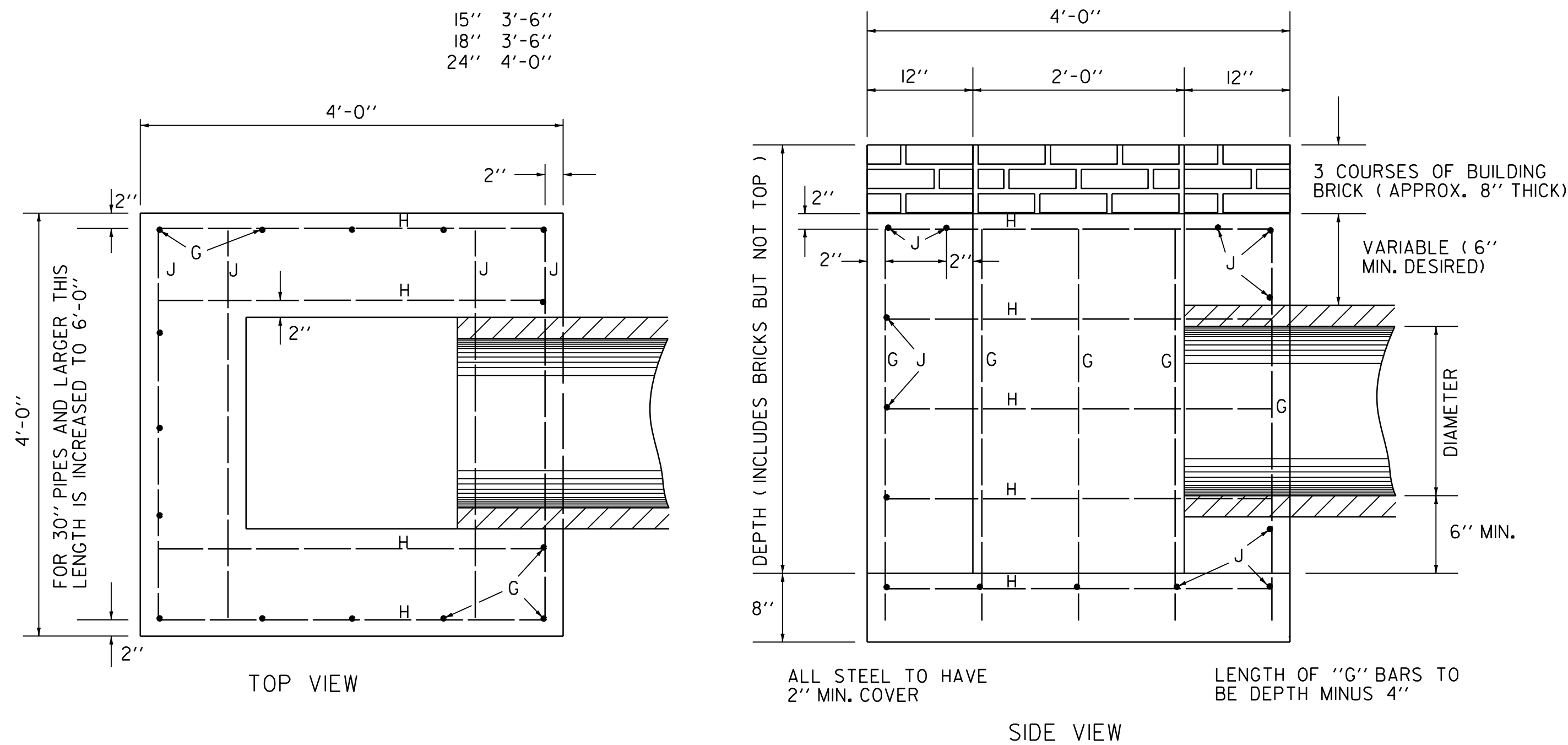


REINFORCED CONCRETE DROP INLET WITH GRATE (BOTTOM SECTION)

ANY OF THE COMBINATIONS OF TOPS, CURBS AND GRATES FOUND ON SHEETS D-6, D-9, D-10, D-11, D-15 AND D-16 CAN BE ADAPTED FOR USE WITH THIS STRUCTURE.

MINIMUM DEPTH FOR

15"	3'-6"
18"	3'-6"
24"	4'-0"



DEPTH	12" TO 24" DIAMETER 4' x 4' D.I.				30" DIAMETER 4' x 6' D.I.			
	NO. J	LENGTH	NO. H	LENGTH	NO. J	LENGTH	NO. H	LENGTH
3'-0"	12	3'-8"	13	3'-8"	15	2'-8"		
3'-6"	12	3'-8"	13	3'-8"	15	3'-2"		
4'-0"	14	3'-8"	15	3'-8"	15	3'-8"		
4'-6"	14	3'-8"	15	3'-8"	15	4'-2"	12	5'-8"
5'-0"	16	3'-8"	17	3'-8"	15	4'-8"	14	5'-8"
5'-6"	16	3'-8"	17	3'-8"	15	5'-2"	14	5'-8"
6'-0"	18	3'-8"	19	3'-8"	15	5'-8"	16	5'-8"

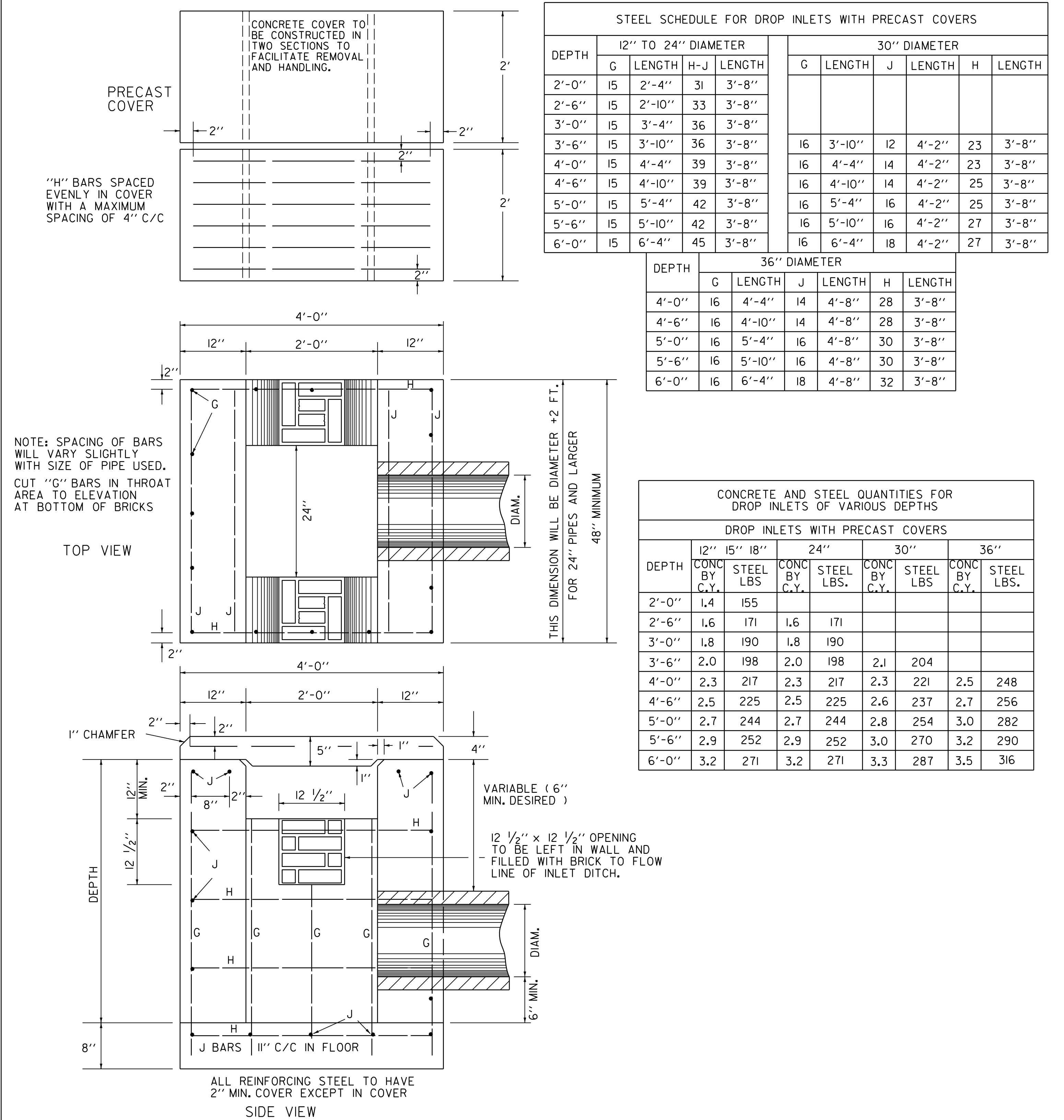
DEPTH	12"-24" DIA.		30" DIA.		36" DIA.	
	CONC BY C.Y.	STEEL	CONC BY C.Y.	STEEL	CONC BY C.Y.	STEEL
3'-0"	1.73	138				
3'-6"	1.95	145				
4'-0"	2.17	168				
4'-6"	2.40	176	3.08	210		
5'-0"	2.62	199	3.37	238	3.29	238
5'-6"	2.84	207	3.67	247	3.59	247
6'-0"	3.06	230	3.97	276	3.89	276

DEPTH	36" DIAMETER 4' x 6' D.I.			
	NO. J	LENGTH	NO. H	LENGTH
5'-0"	14	5'-8"	19	3'-8"
5'-6"	14	5'-8"	19	3'-8"
6'-0"	16	5'-8"	21	3'-8"

- TO FIND VOLUME OF CONCRETE FOR THE ENTIRE STRUCTURE, ADD THE VOLUME FOR THE TOP USED, TO THE VOLUME IN THIS TABLE. FOR VOLUME IN TOP, SEE SHEETS D-9, D-10.
- ALL REINFORCING STEEL TO BE NO. 5 O DEFORMED BARS, EVENLY SPACED WITH A MAXIMUM SPACING OF 12" CENTER TO CENTER.
- DROP INLET TO BE CONSTRUCTED IN ACCORDANCE WITH STRUCTURAL CONCRETE, SECTION 54I.
- FURNISHING AND LAYING OF BRICKS FOR ADJUSTING ELEVATION OF GRATE, SHALL BE INCLUDED IN UNIT BID PRICE FOR CONCRETE, CLASS B AND THEIR VOLUME TO BE INCLUDED IN THE FINAL QUANTITIES.
- MORTAR, TYPE II, TO BE USED FOR JOINT FILLER AND LAYING OF BRICK.
- FOR PIPES OF 30" OR MORE IN DIAMETER, ALLOWANCE SHALL BE MADE FOR THE OPENING IN COMPUTING CONCRETE VOLUMES. THIS DEDUCTION WILL BE BASED ON THE RATED DIAMETER OF THE PIPE USED, WITH THE SAME DEDUCTION FOR CONCRETE AND METAL PIPE.

REINFORCED CONCRETE DROP INLET WITH PRECAST COVER

DROP INLET AND COVER TO BE CONSTRUCTED IN ACCORDANCE WITH STRUCTURAL CONCRETE, SECTION 54I



DEPTH	12" TO 24" DIAMETER				30" DIAMETER					
	G	LENGTH	H-J	LENGTH	G	LENGTH	J	LENGTH	H	LENGTH
2'-0"	15	2'-4"	31	3'-8"						
2'-6"	15	2'-10"	33	3'-8"						
3'-0"	15	3'-4"	36	3'-8"						
3'-6"	15	3'-10"	36	3'-8"	16	3'-10"	12	4'-2"	23	3'-8"
4'-0"	15	4'-4"	39	3'-8"	16	4'-4"	14	4'-2"	23	3'-8"
4'-6"	15	4'-10"	39	3'-8"	16	4'-10"	14	4'-2"	25	3'-8"
5'-0"	15	5'-4"	42	3'-8"	16	5'-4"	16	4'-2"	25	3'-8"
5'-6"	15	5'-10"	42	3'-8"	16	5'-10"	16	4'-2"	27	3'-8"
6'-0"	15	6'-4"	45	3'-8"	16	6'-4"	18	4'-2"	27	3'-8"

DEPTH	36" DIAMETER					
	G	LENGTH	J	LENGTH	H	LENGTH
4'-0"	16	4'-4"	14	4'-8"	28	3'-8"
4'-6"	16	4'-10"	14	4'-8"	28	3'-8"
5'-0"	16	5'-4"	16	4'-8"	30	3'-8"
5'-6"	16	5'-10"	16	4'-8"	30	3'-8"
6'-0"	16	6'-4"	18	4'-8"	32	3'-8"

DEPTH	12" DIA.		15" DIA.		18" DIA.		24" DIA.		30" DIA.		36" DIA.	
	CONC BY C.Y.	STEEL LBS.	CONC BY C.Y.	STEEL LBS.	CONC BY C.Y.	STEEL LBS.	CONC BY C.Y.	STEEL LBS.	CONC BY C.Y.	STEEL LBS.	CONC BY C.Y.	STEEL LBS.
2'-0"	1.4	155										
2'-6"	1.6	171	1.6	171								
3'-0"	1.8	190	1.8	190								
3'-6"	2.0	198	2.0	198	2.1	204						
4'-0"	2.3	217	2.3	217	2.3	221	2.5	248				
4'-6"	2.5	225	2.5	225	2.6	237	2.7	256				
5'-0"	2.7	244	2.7	244	2.8	254	3.0	282				
5'-6"	2.9	252	2.9	252	3.0	270	3.2	290				
6'-0"	3.2	271	3.2	271	3.3	287	3.5	316				

REV.	DATE	DESCRIPTION
0	DEC. 6, 1971	ORIGINAL APPROVAL
1	JUN. 1, 1994	REISSUED, WITHOUT CHANGE, NEW SIGNATURES
2	JAN. 3, 2000	CORRECTED TITLE & MINOR EDITORIAL CHANGES
3	JUN. 25, 2024	MISC. REVISIONS, BORDER UPDATE
OTHER STANDARDS REQUIRED: NONE		
VTRANS AND FHWA APPROVAL ON FILE WITH CONTRACT ADMINISTRATION		

REINFORCED CONCRETE DROP INLET WITH PRECAST COVER

REINFORCED CONCRETE DROP INLET WITH GRATE (BOTTOM SECTION)



STANDARD
D - 8