

**Indiana and Northern Long-Eared Bat Guidance  
For all Maintenance Activities and Maintenance Projects (State funded)  
(DEC2021)**

The federal and state requirements for Indiana bats and northern long-eared bats (NLEB's) have recently been updated. The following guidelines summarize the implementation of the requirements by laying out the need for coordination with the Environmental Section Biologists and the steps required for review of Maintenance projects and activities, including surveys, impact avoidance/minimization measures, and commitments/special provision language.

Implementation of Requirements:

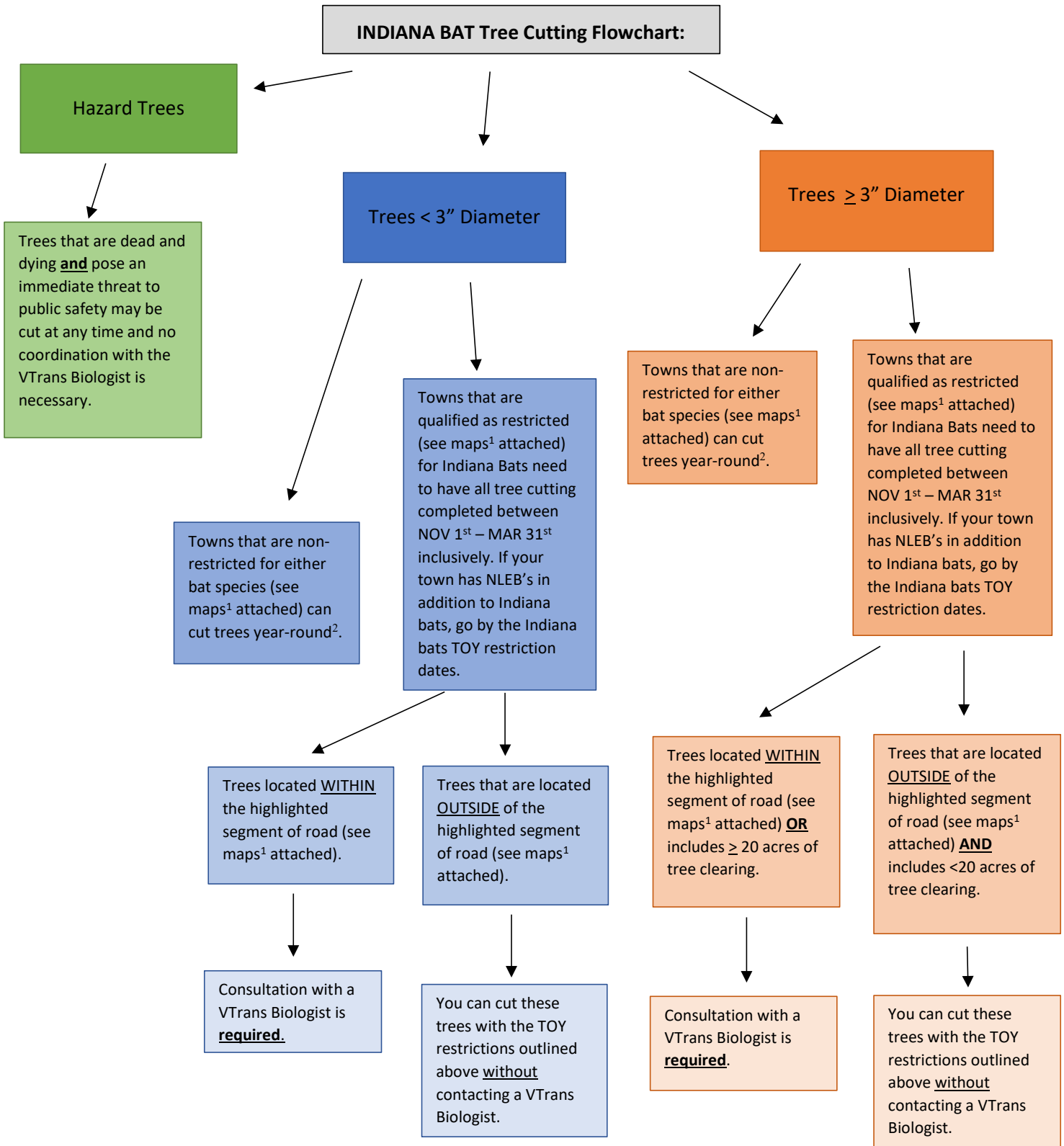
- Tree cutting
  - See Flowchart #1 if your town(s) is located within ADDISON, CHITTENDEN, RUTLAND, or BENNINGTON counties for time of year (TOY) restrictions for tree cutting.
  - See Flowchart #2 for all other towns and counties excluding the ones listed above for time of year restrictions for tree cutting.
- Structures work (bridges or buildings)
  - VTrans Biologists will determine presence of potentially suitable habitat. If no potentially suitable (or documented) habitat is present, no Time-of-Year restrictions apply.
  - If structures are determined to be potentially suitable or confirmed habitat, VTrans Biologists will:
    - ✓ Implement exclusionary measures if possible, and/or
    - ✓ Coordinate necessary studies to determine presence, if not already confirmed. If no presence is detected, then no restrictions apply. However, if presence is detected, further consultation/permitting will be necessary.
- Ledge work
  - VTrans Biologist will determine presence of suitable habitat. If no potentially suitable habitat, no restrictions apply.
  - If ledges are determined to be potentially suitable habitat, VTrans Biologist will coordinate necessary studies to determine presence. If no presence is detected, no restrictions apply. However, if presence is detected, further consultation/permitting will be necessary.

General Notes:

- This guidance is related to reviews for impacts to protected bat species only. All necessary review requests shall be completed through NERD or VPINS. If you find bats (dead or alive) while cutting trees, please contact a VTrans Biologist.
- This guidance is to be used for state funded VTrans Maintenance projects or activities ONLY.

**Flowcharts for Indiana and Northern Long-Eared Bat Guidance  
For all Maintenance Activities and Maintenance Projects (State funded) (DEC2021)**

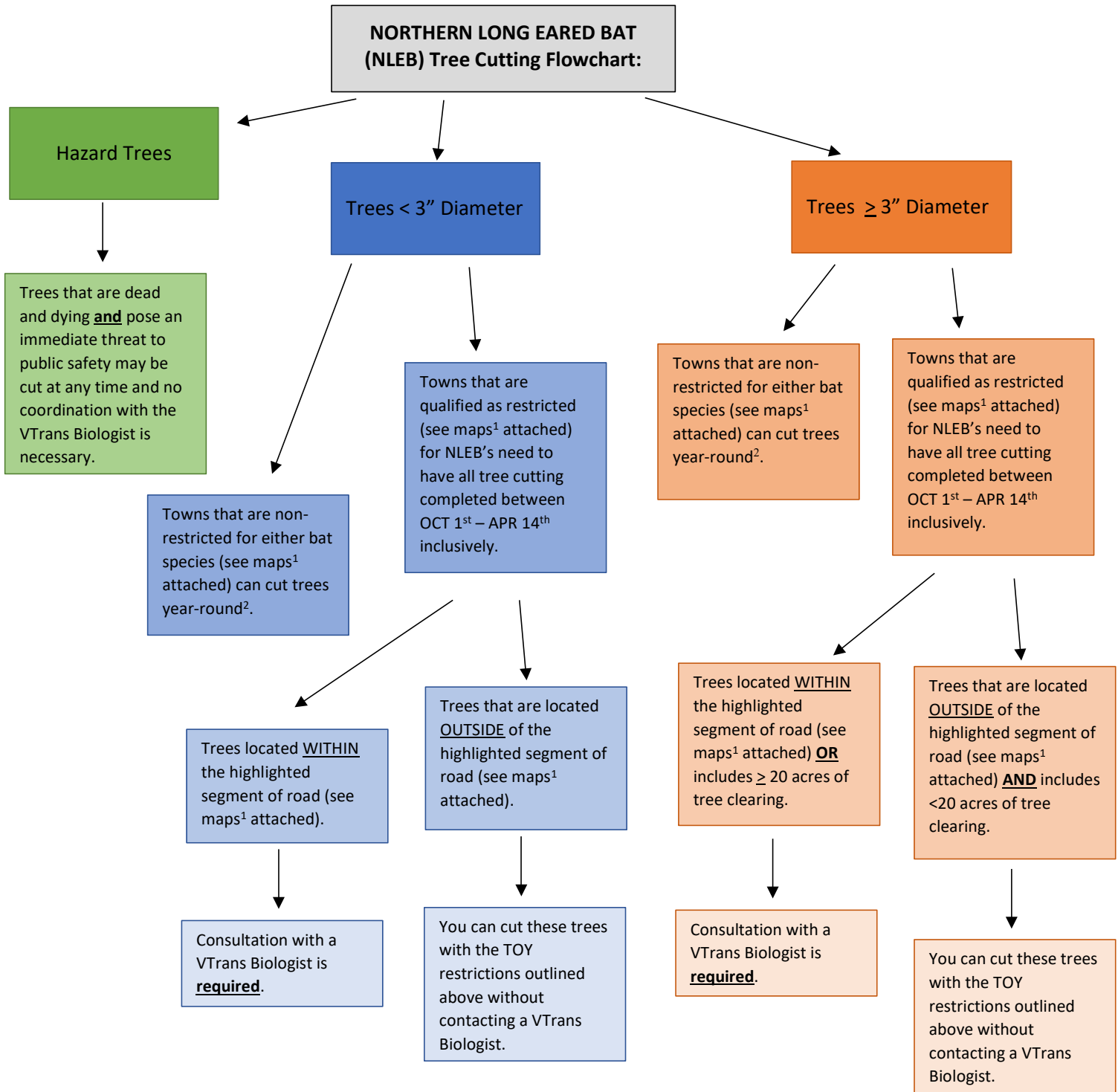
Flowchart 1: **ONLY USED** FOR ADDISON, CHIDDENDEN, RUTLAND, AND BENNINGTON COUNTIES



<sup>1</sup> Attached maps are entitled “NW/NE/SW/SE Region VT Towns with Known Indiana Bat and Northern Long-Eared Bat Habitat”. Pick whatever regional map your town is located in. The map is subject to change based on best available data from VT Fish and Wildlife and USFWS.

<sup>2</sup> If there will be ≥ 20 acres of tree clearing in any town (restricted or un-restricted) you will be required to consult with a VTrans Biologist.

Flowchart 2: USED FOR **ALL OTHER COUNTIES:**

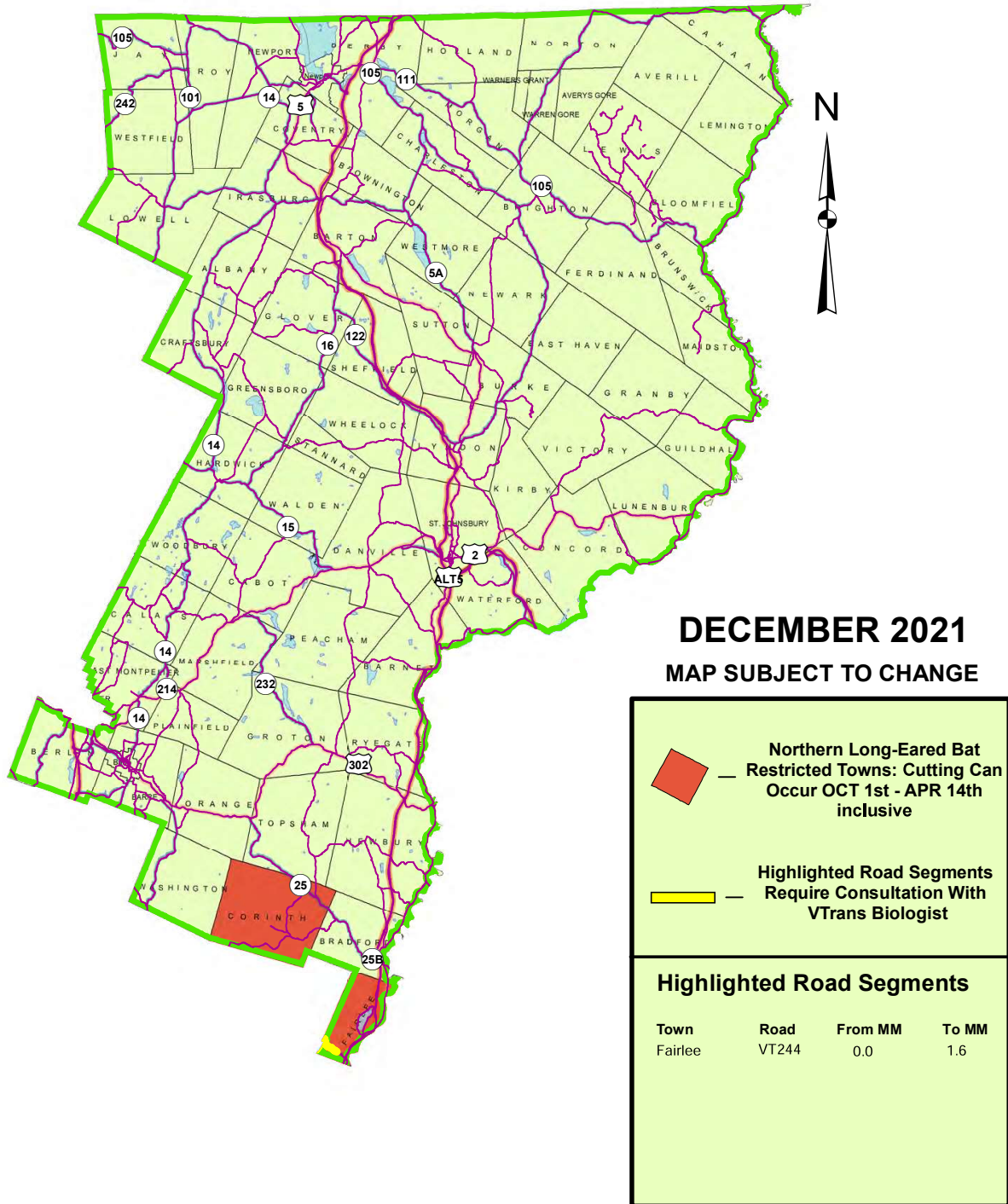


<sup>1</sup> Attached maps are entitled “NW/NE/SW/SE Region VT Towns with Known Indiana Bat and Northern Long-Eared Bat Habitat”. Pick whatever regional map your town is located in. The map is subject to change based on best available data from VT Fish and Wildlife and USFWS.

<sup>2</sup> If there will be ≥ 20 acres of tree clearing in any town (restricted or un-restricted) you will be required to consult with a VTrans Biologist.

# Northeast Region Vermont Towns with Known Indiana Bat and Northern Long-Eared Bat Habitat

This map is a supplement to:  
**"Indiana and Northern Long-Eared Bat Guidance  
 For all Maintenance Activities and Maintenance Projects  
 (State funded) (DEC 2021)"**  
**Please review that document for more details.**



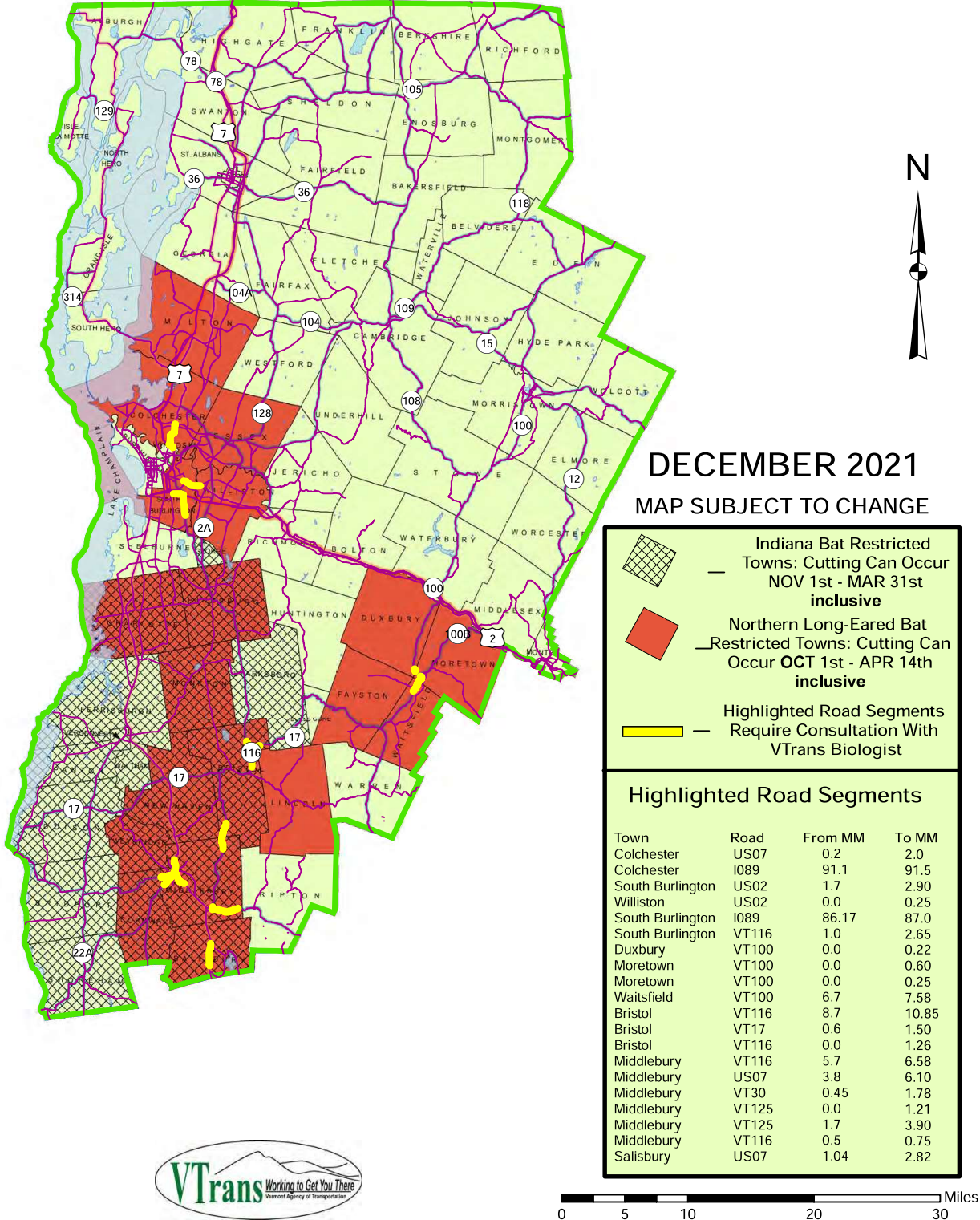
For more information:  
 Refer to the "State and Federal Listed Bats Guidance for all VTrans Projects and Maintenance Activities" memo  
 or contact a VTrans biologist.

Glenn Gingras (North Region): (802) 279-0583 glenn.gingras@vermont.gov  
 Meg Lout (South Region): (802) 595-6708 meg.lout@vermont.gov



# Northwest Region Vermont Towns with Known Indiana Bat and Northern Long-Eared Bat Habitat

This map is a supplement to:  
**"Indiana and Northern Long-Eared Bat Guidance  
 For all Maintenance Activities and Maintenance Projects  
 (State funded) (DEC 2021)"**  
 Please review that document for more details.

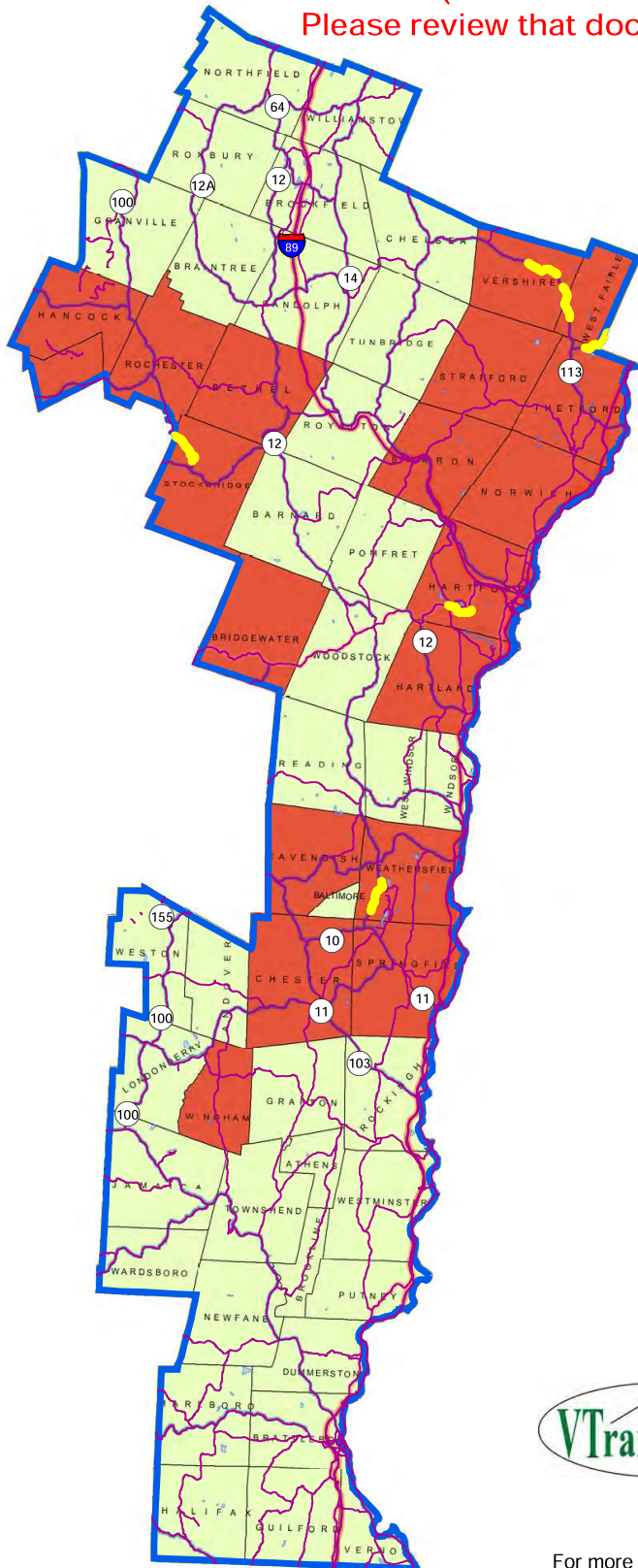


For more information:  
 Refer to the "State and Federal Listed Bats Guidance for all VTrans Projects and Maintenance Activities" memo  
 or contact a VTrans biologist.



Glenn Gingras (North Region): (802) 279-0583 glenn.gingras@vermont.gov  
 Meg Lout (South Region): (802) 595-6708 meg.lout@vermont.gov

# Southeast Region Vermont Towns with Known Indiana Bat and Northern Long-Eared Bat Habitat

This map is a supplement to:  
**"Indiana and Northern Long-Eared Bat Guidance  
 For all Maintenance Activities and Maintenance Projects  
 (State funded) (DEC 2021)"**  
 Please review that document for more details.



**DECEMBER 2021**  
 MAP SUBJECT TO CHANGE



 Northern Long-Eared Bat Restricted Towns: Cutting Can Occur OCT 1st - APR 14th **inclusive**  
 Highlighted Road Segments Require Consultation With VTrans Biologist

**Highlighted Road Segments**

Town	Road	From MM	To MM
Vershire	VT113	3.9	6.1
Vershire	VT113	7.0	7.72
West Fairlee	VT113	0.0	1.5
Thetford	VT244	0.92	1.48
West Fairlee	VT244	0.0	1.5
Stockbridge	VT100	2.58	5.0
Hartford	US04	2.35	4.18
Weathersfield	VT106	0.75	2.98



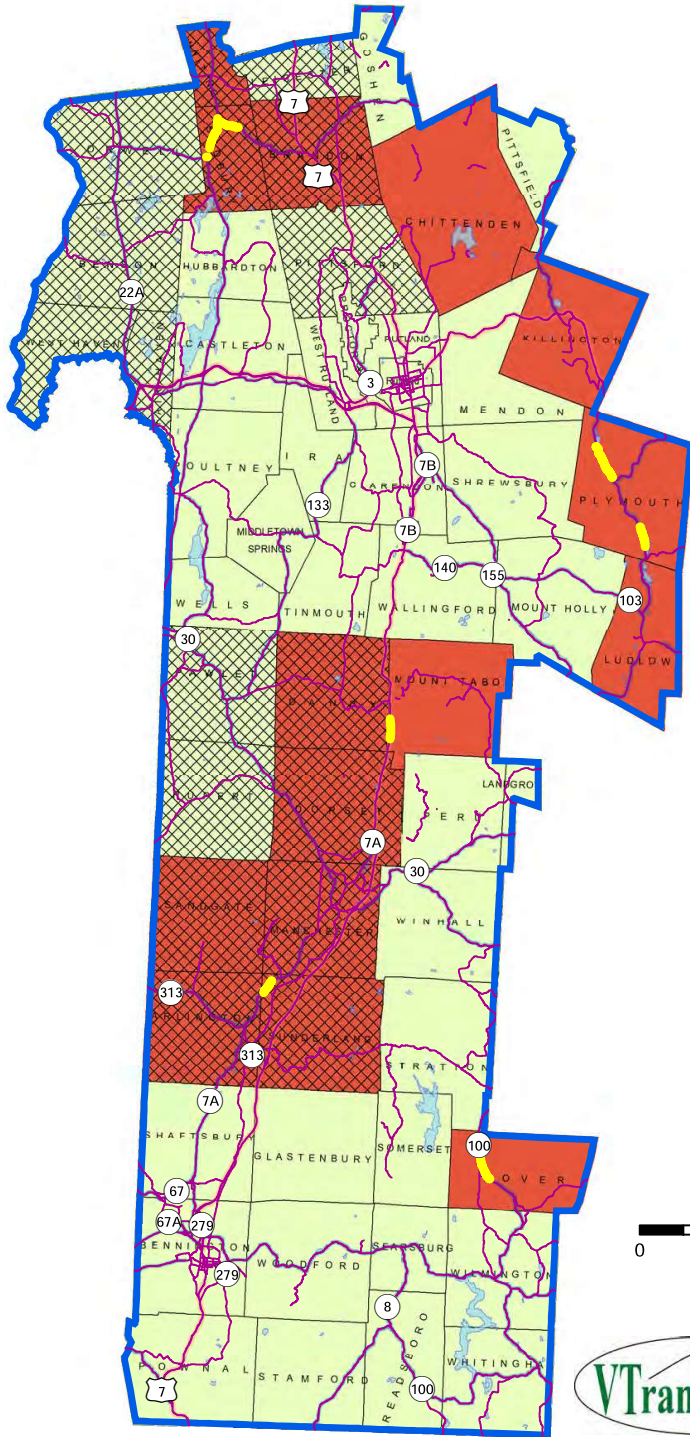
For more information:  
 Refer to the "Indiana and Northern Long-Eared Bat Guidance For all Maintenance Activities and Maintenance Projects (State funded) (DEC2021)" memo or contact a VTrans biologist.

 Glenn Gingras (North Region): (802) 279-0583 glenn.gingras@vermont.gov  
 Meg Lout (South Region): (802) 595-6708 meg.lout@vermont.gov



# Southwest Region Vermont Towns with Known Indiana Bat and Northern Long-Eared Bat Habitat

This map is a supplement to:  
**"Indiana and Northern Long-Eared Bat Guidance  
 For all Maintenance Activities and Maintenance Projects  
 (State funded) (DEC 2021)"**  
 Please review that document for more details.



**DECEMBER 2021**  
 MAP SUBJECT TO CHANGE

**Indiana Bat Restricted Towns: Cutting Can Occur NOV 1st - MAR 31st inclusive**

**Northern Long-Eared Bat Restricted Towns: Cutting Can Occur OCT 1st - APR 14th inclusive**

**Highlighted Road Segments — Require Consultation With VTrans Biologist**

### Highlighted Road Segments

Town	Road	From MM	To MM
Sudbury	VT30	3.86	5.7
Sudbury	VT73	0.32	1.6
Plymouth	VT100	5.52	7.6
Plymouth	VT100	0.9	2.1
Mount Tarbor	US07	0.72	1.86
Sunderland	VT07A	0.23	1.05
Dover	VT100	2.62	4.21



For more information:  
 Refer to the "State and Federal Listed Bats Guidance for all VTrans Projects and Maintenance Activities" memo  
 or contact a VTrans biologist.

Glenn Gingras (North Region): (802) 279-0583 glenn.gingras@vermont.gov  
 Meg Lout (South Region): (802) 595-6708 meg.lout@vermont.gov