

Web Crash Map Tool Guide



Last Updated: January 3, 2023

This document outlines how to use the map tool to locate crashes in Web Crash. Please contact the VTrans crash program with any questions.

aot.crashrequests@vermont.gov

(888) 374-3011

Using the Map Tool

When the map tool is used to locate crashes, additional information is copied to Page 1 of the report. Additional location data is also copied to the report behind the scenes.

1 The following information must be entered into Page 1 before the map tool can be launched:

- Select the City/Town from the dropdown menu.


City/Town

- Enter the nearest address in Street Address.


Street Address

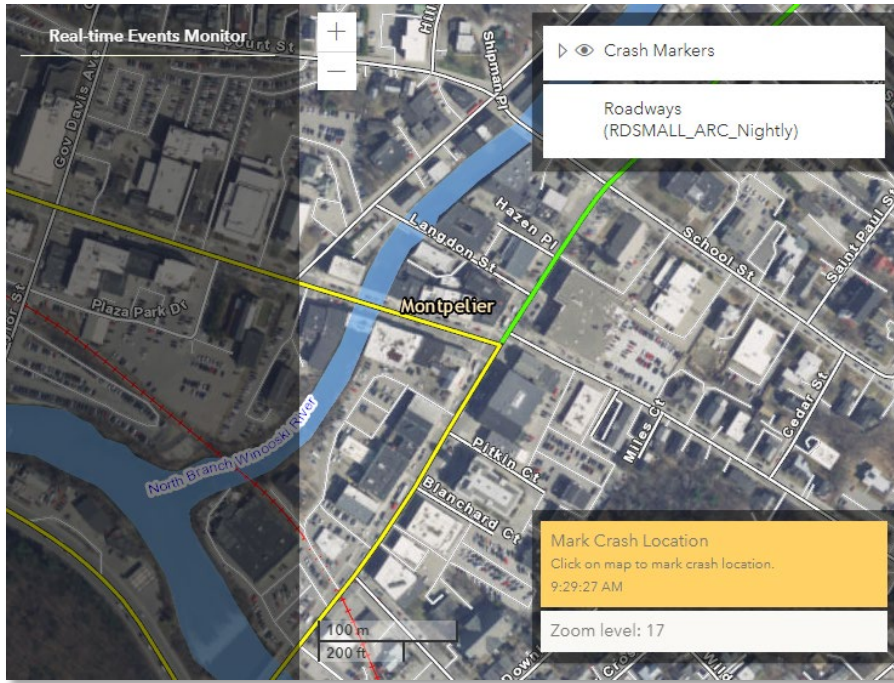
- Select the road characteristic type from the Road Characteristics dropdown.

H

 Note:

Most location attributes will not be copied to Page 1 if **13 – Parking Lot** is selected as the road characteristic type. See the next section for instructions on non-roadway crashes.

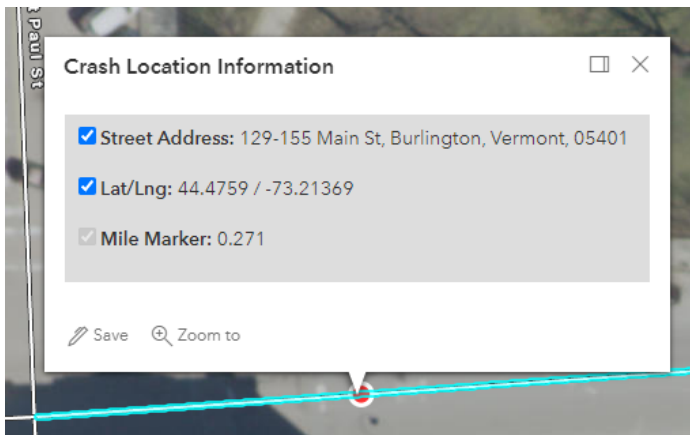
2 Click on the map tool icon  to launch the map tool. The map tool will open in a new window. By default, the map tool will have a satellite imagery basemap with a symbolized road feature overlay.



- 3 Zoom to level 15 or higher before marking a crash location. The tool will return the following error if the map is not zoomed in far enough before a selection is made:

Zoom level: 14 (15+ required for selection)

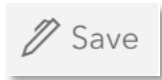
- 4 Click on the symbolized road feature where the crash occurred. The road feature will become highlighted in blue when a valid selection is made.




Note:

Crashes must be marked on a symbolized road feature. Attempting to mark a crash elsewhere will return an error message. See the instructions below for information on how to mark non-roadway crashes.

5 Click the Save icon in the pop-up window to save the crash location and copy information back to Page 1 of the report.



6 If needed, you can relaunch the map tool by clicking on the map tool icon  and choose a different location for the crash.

Non-Roadway Crashes

The map tool can still be used for crashes that do not occur on the road network. A common example of these are parking lot crashes.

When non-roadway crashes are marked using the map tool, fewer attributes are copied to Page 1. However, it is still recommended to use the map tool.

1 Enter the following information into Page 1 of the report:

- Select the City/Town from the dropdown menu.


City/Town

- Enter the nearest address in Street Address.

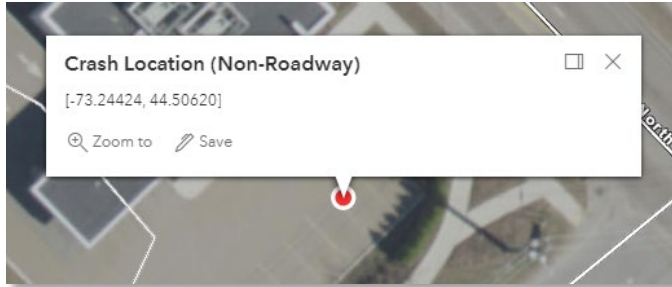
Street Address

2 Select a non-roadway type road characteristic from the Road Characteristics dropdown, such as 13 – Parking Lot.

H

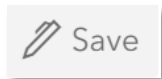
3 Click on the map tool icon  to launch the map tool. The map tool will open in a new window.

4 Click on the non-roadway location where the crash occurred. Note that only the Latitude and Longitude of the crash is captured.



- 5 Click the Save icon in the pop-up window to save the crash location and copy information back to Page 1 of the report.

Only the Latitude and Longitude will be copied to Page 1.



Other Scenarios

Intersection Crashes

When marking crashes at intersections, the Street Address will only be captured for the main-line road. Therefore, it is important to be sure to select the main-line road only when marking intersection crashes.

After the location information has been copied to Page 1, you can manually enter the intersecting street or landmark in the Intersecting with OR Nearest Intersecting St or Landmark field.

Intersection with OR Nearest
Intersecting St or Landmark

Speed Limit Bug

If the Posted Speed is entered before using the map tool, it will be overwritten when the crash information is saved to Page 1.

Therefore, the recommendation is to locate the crash with the map tool first before entering other information into Page 1.