



# Shelburne St. Roundabout

BURLINGTON, VT.

Factsheet | October 2021

## WHAT'S THE PROJECT?

The Vermont Agency of Transportation (VTrans) and the Burlington Department of Public Works (Burlington DPW) are improving roadway conditions for all users along US Route 7 (Shelburne Street) in Burlington. This joint initiative includes street reconstruction, including a new single-lane roundabout at the intersection of US Route 7 (South Willard Street), US ALT Route 7 (Shelburne Street), Ledge Road and Locust Street. The project also includes the addition of a designated left turn lane onto Ledge Road and the installation of new dedicated pedestrian facilities and shared pedestrian and bicycle facilities. Furthermore, the project will improve signage, street lighting, drainage, stormwater runoff treatment, and relocate and consolidate utility transmissions underground.

## PROJECT MILESTONES



Permitting  
October 2017

Right of Way  
Clearance  
October 2019



Dig Safe &  
Environmental  
Sample  
June 2020

Bid Advertisement  
January 2021



Contract Award  
May 2021

Begin Work  
August 2021

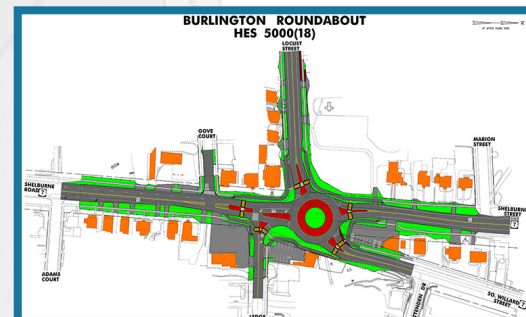


Complete Work  
Spring 2023

## WHY A ROUNDABOUT?

The roundabout design was selected because it is the best-engineered solution and will enhance safety and mobility issues that the current intersection does not, including:

- Provide continuous traffic flow at low speeds;
- The geometry of the roundabout focuses user's sightlines;
- The single lane roundabout will accommodate up to 25,000 vehicles per day without needing additional lanes;
- Expected to reduce crashes by up to 72% (per FHWA CMF Clearinghouse);
- All left-turn lanes become right-turn lanes, which makes the roadway more predictable for users;
- Crosswalks will be shorter in length for pedestrians and will be in highly visible locations;
- Buried utilities will be relocated and consolidated in duct banks for easy and safe maintenance accessibility;
- Area drive accesses will be controlled;
- New buried sand filters and detention vaults to treat previously untreated stormwater runoff without surcharging existing accepting systems;
- The central island will create an opportunity for aesthetic treatments and a city gateway.



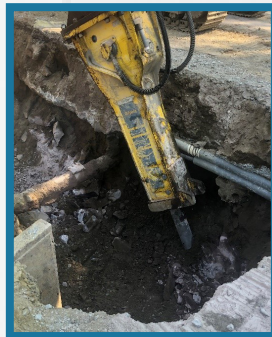
Shelburne Street Roundabout plan sheet

## CONSTRUCTION

Construction began on August 10, 2021 and will continue through 2023. The first year of construction is focused on underground utility relocation and installing new water and sewer lines, as well as the installation of a new crosswalk on Shelburne Street just south of Adams Street. The second half of construction will focus on building the roundabout, splitter islands and a center island. Construction activity will be conducted primarily during daytime hours, 6:30 AM to 5:30 PM. Work prior to 7 AM, will be restricted to minimize residential noise disruptions. The winter shut down period is December 15 through April 15. Minor utility relocation work may still occur during this time outside of the roadway.

### PROJECT BLASTING

Due to the presence of ledge and bedrock, blasting and hammering is needed to complete utility relocation work. A public meeting was held on September 15, 2021, where the contractor shared an overview of what the public could expect from the blasting activities. Residences and business within 500 feet of the blasting zone will be surveyed before any blasting occurs. Blasting is expected to commence in late fall 2021. Blasting will be low vibration, protected by blast mats, and sound like far off thunder. Spotters will block off the blast area and keep all pedestrians and bicyclists safely away. Rolling roadblocks will be utilized to maintain the safety of vehicular traffic. Much of the rock removal will take place throughout the first construction season in late 2021, but it will continue as needed in 2022.



Crews excavating for waterline installation (l) and mechanical hammering to remove ledge (r).

### TRAFFIC IMPACTS

The previous rotary was removed at the beginning of construction in August 2021, and a new traffic pattern was installed along US 7/Shelburne Street between Flynn Ave and the intersection with St. Paul Street/Union Street and along US 7/South Willard Street to Beech Street. US 7/Shelburne Street/South Willard Street northbound traffic has been reduced to one lane after Flynn Ave. There will be intermittent detours and road closures in place during each construction phase. A Transportation Management Plan will continue to be implemented through construction and will include:

- Maintained pedestrian and bicycle accommodations throughout construction
  - Detour routes for select construction phases
  - Restricted parking areas throughout the project limits will be signed
  - Restricted left turns during select construction phases
  - Potential off-site student pick-up/drop-off locations
- Traffic impacts and updates will be posted regularly on the project website.

**VTRANS PROJECT MANAGER:** Michael LaCroix  
**BURLINGTON DPW PROJECT MANAGER:** Olivia Darisse, P.E.

**DESIGNER:** VTrans Traffic Design Section

**CONTRACTOR:** S.D. Ireland Brothers, Corp.

### STAY INFORMED

There are multiple way to stay informed about project activities during construction.

- Weekly email Construction Updates including information about roadway detours will be distributed during construction. Sign up today by emailing the team at [info@shelburnestreetroundabout.com](mailto:info@shelburnestreetroundabout.com).
- Traffic Alerts will be distributed via email when unexpected activity or changes to the schedule occur.
- The project website, [vtrans.vermont.gov/projects/burlington-roundabout](http://vtrans.vermont.gov/projects/burlington-roundabout), will be updated with new project information, weekly Construction Updates and Traffic Alerts.
- The project's 24-hour public telephone hotline, 802-496-8956, can be reached at anytime to share concerns or ask questions related to the Shelburne Street Roundabout Project.
- VT-Alerts will be used to issue urgent announcements at the discretion of Burlington DPW.



Email us at [info@ShelburneStreetRoundabout.com](mailto:info@ShelburneStreetRoundabout.com) or call 802-496-8956