

# Housekeeping Items



- Meeting is being recorded and will be posted on the project website
- Everyone is muted



## For those joining us by computer or web browser

Questions may be entered in the Q&A Window at any time (button appears the bottom of the screen) - please include your email address



## For those joining us by phone

Press \*9 to raise your hand to be called on during the question-and-answer session following the presentation



## For those joining us in person

Please raise your hand and a member of our team will alert you when it's your turn to speak during the question-and-answer session

# Project Construction

*Burlington's Southern Gateway*



## Shelburne St. Roundabout

BURLINGTON, VT.

July 1, 2021  
Project Information Meeting



# Introductions: Project Team



## Project Managers

- Michael LaCroix
- Ben Tietze



- Laura Wheelock
- Olivia Darisse



## Public Outreach Officers

- Megan Savage
- Delia Makhetha



# Introductions: Project Construction Team



## VTrans Construction Staff

- Josh Hulett
- Kara Yelinek



## Prime Contractor

- Matt Wheeler
- Brian Mier



# Welcome to the Rotary!



**Shelburne St.  
Roundabout**

BURLINGTON, VT.



**Shelburne Street Roundabout Project**

# Why a Project?

- High Crash Location
  - In 2016, 50 reported crashes in 5 years
  - Has been on every HCL consecutively since at least 1998 (22 years)
- Left Turns: Awkward and tight
- Uncontrolled Drive Accesses
- High presence of bicyclist and pedestrians
  - School and churches are frequent destinations
  - Long existing crosswalks
  - Inadequate number of crosswalks
- Aesthetically unappealing
  - A sea of pavement, Lack of landscaping
  - Not welcoming as a gateway for city



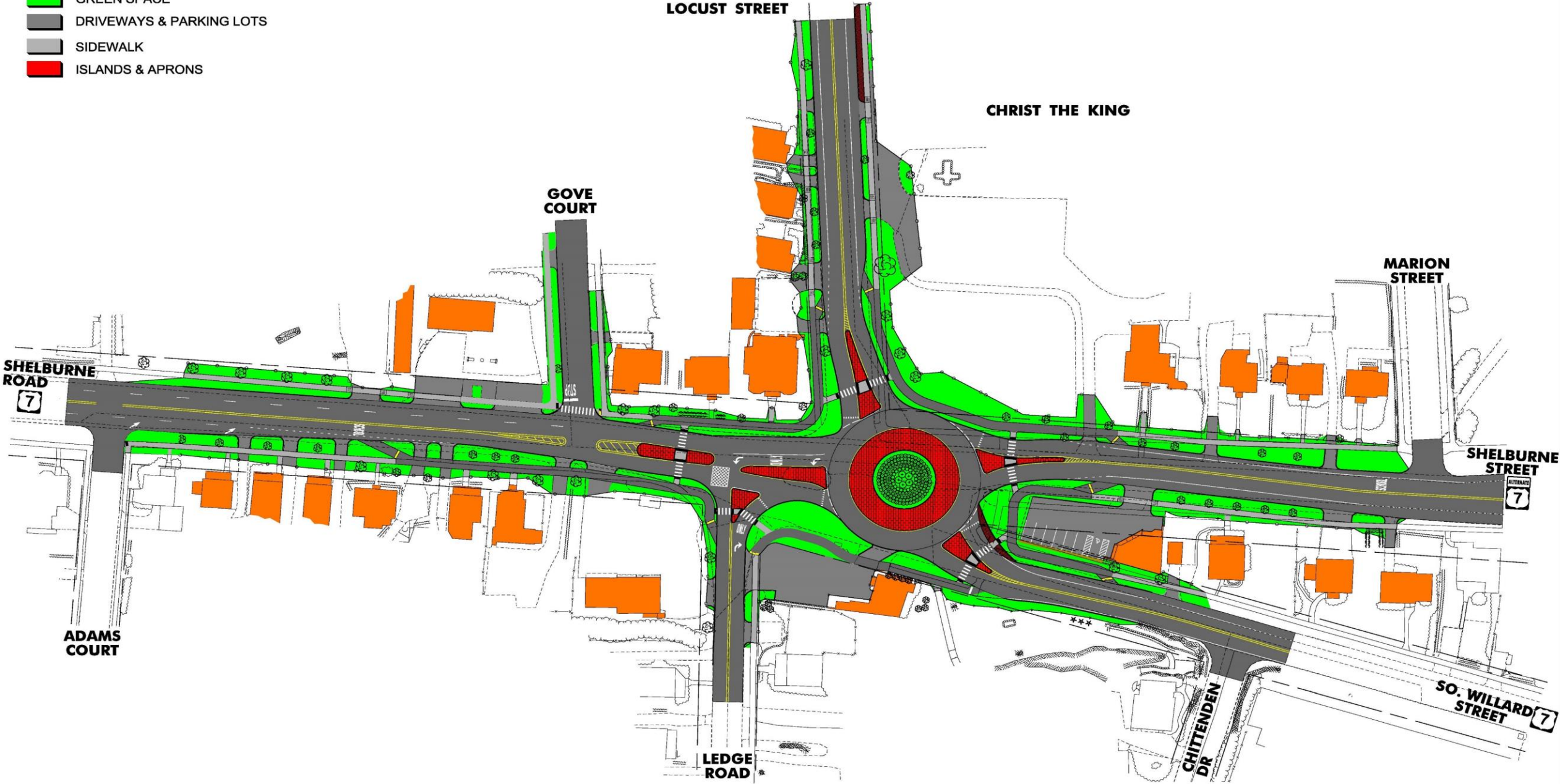
**Shelburne St.  
Roundabout**  
BURLINGTON, VT.



**LEGEND**

-  BUILDING/STRUCTURE
-  ROADWAY & SHARED USE PATH
-  GREEN SPACE
-  DRIVEWAYS & PARKING LOTS
-  SIDEWALK
-  ISLANDS & APRONS

# BURLINGTON ROUNDABOUT HES 5000(18)



# The Solution: *The Modern Roundabout*





# Schedule



- Work begins in Mid-July 2021 (Watch Message Boards & E-Mail updates for actual start date).
- Schedule: Mondays through Fridays *typically*
- Hours: 7:00 AM – 5:30 PM *typically*
  
- Saturday work *may* be allowed for special situations.
- Nighttime work *may* be allowed for certain construction activities (i.e utility crossings under Shelburne Street).
- Work in winter months as necessary.

Schedule subject to change based on weather and site conditions.

Anticipated Completion: June 2023

# Anticipated Construction Impacts

## *No Small Feats*



### Archaeological

- Excavation of historical artifacts by UVM.

### Contaminated Soils & Water

- Excavation and transporting off-site of petroleum contaminated soils.
- Excavation of urban soils.
- Dewatering and treating of contaminated groundwater as necessary.

### Utilities

- Replace and/or upgrade buried utilities.
- Keeping existing services active, there may be minor shut-offs with 48- to 72-hour advanced notification.
- Disconnect and remove or abandon old services after new services are installed.

# Challenges to Implementation

## *No Small Feats*



### Contaminated Soils & Water

- Petroleum
  - 4 Fueling Stations at some point in the past (1 still exists)
  - Century 21, Majestic Car Rental and Former Rotary Gulf
- Urban Background Development Soils
  - Throughout the site



# Challenges to Implementation

## *No Small Feats*

### Contaminated Soils & Water

- Contaminated Soils will be collected and transported off-site:
  - To Landfill
  - To Incinerator
- There will be no stockpiling of contamination on-site. Only clean material *may* be stockpiled.
- Baffled fractionalization tanks will be on site to filter/settle contaminated groundwater as necessary.

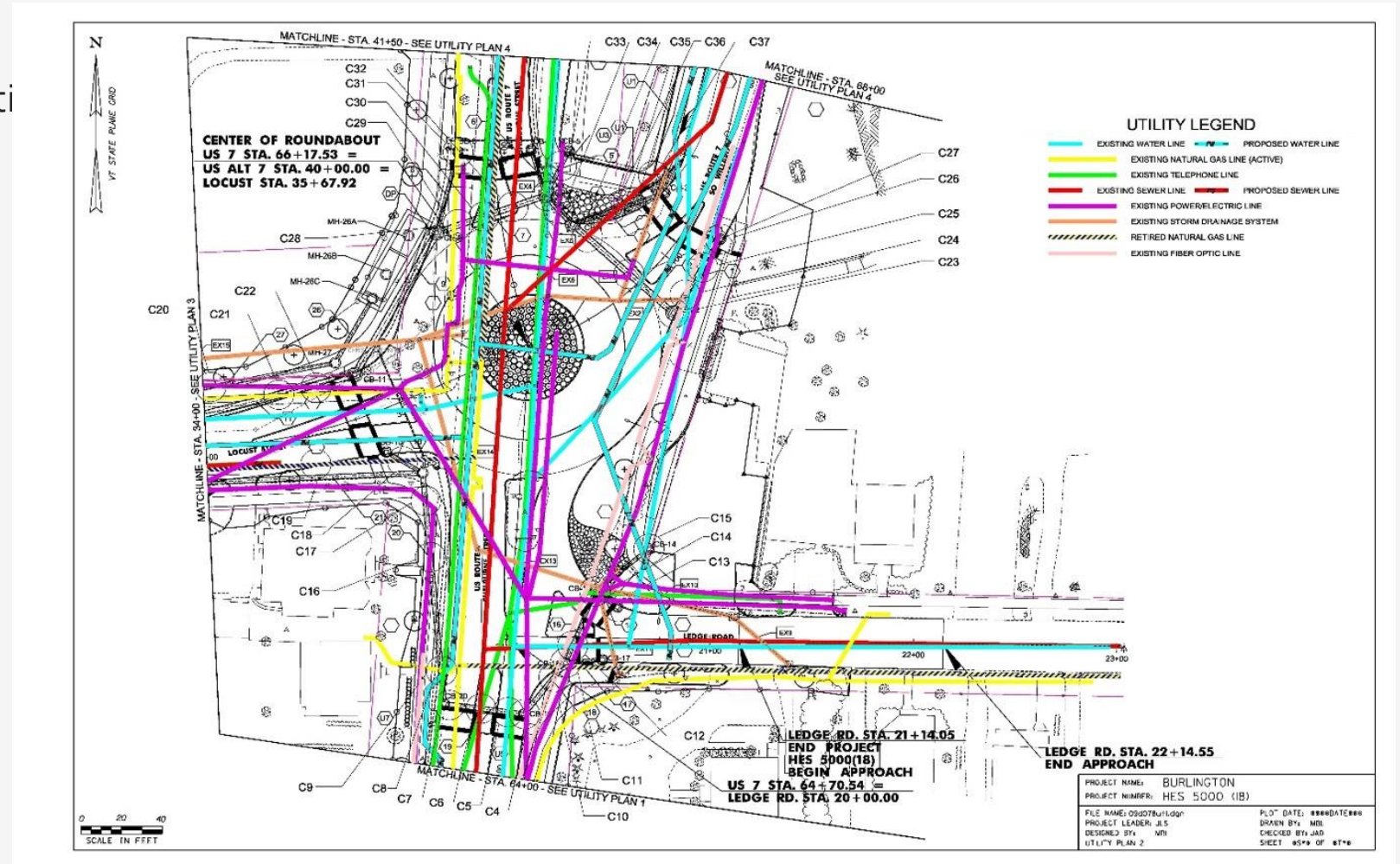


# Challenges to Implementation

## No Small Feats

### Utilities

- 37,000 ft (~7 miles) of existing utilities
- Some active, some abandoned
  - Gas
  - Water
  - Sewer
  - Storm
  - Electric
  - Telephone
  - Telecom
  - Fiber
  - Cable TV



# Challenges to Implementation

## No Small Feats

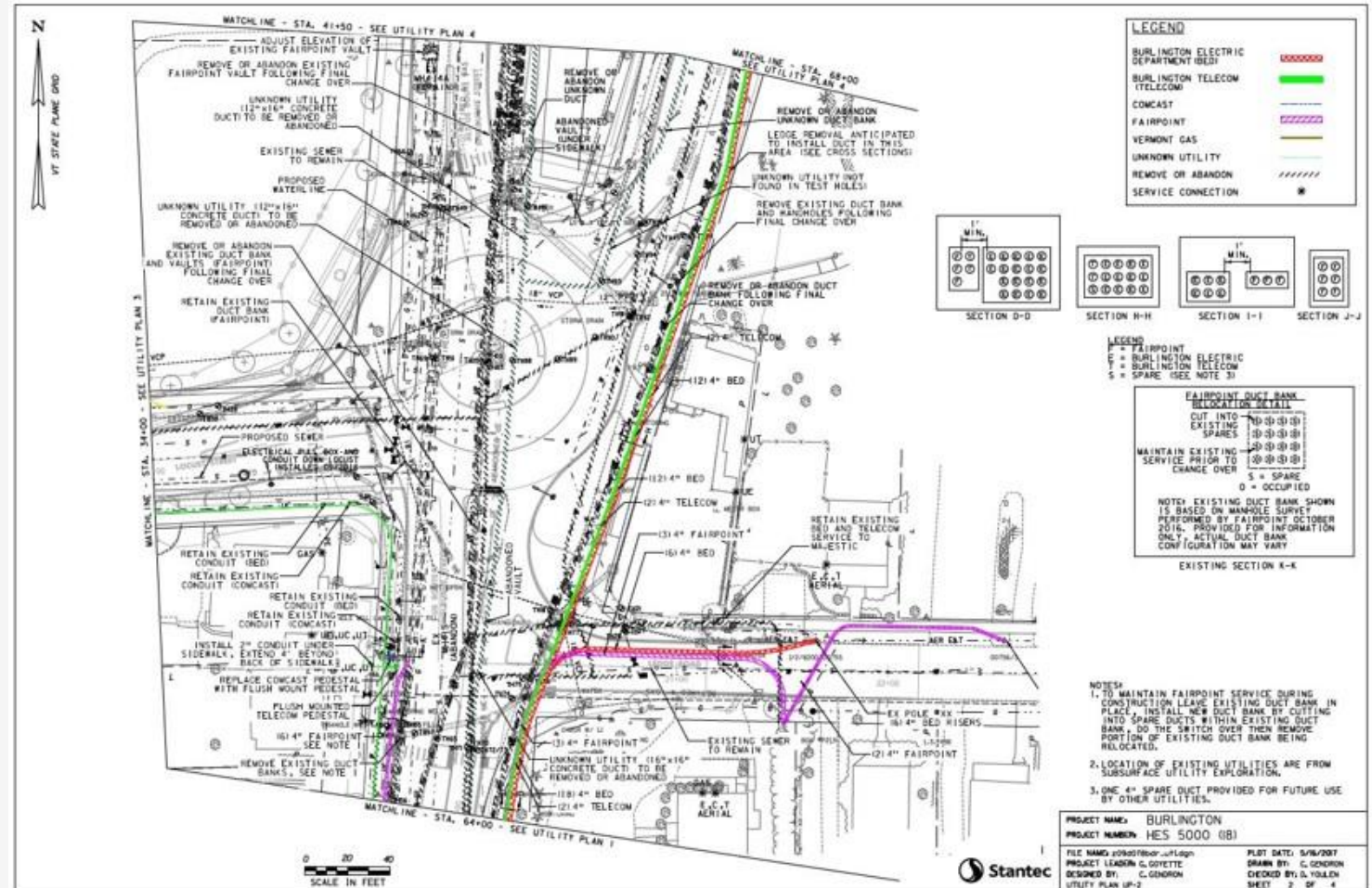


**Shelburne St.  
Roundabout**

BURLINGTON, VT.

### Proposed Utilities

- Utility Duct Banks (Concrete-Encased).
- New water line, sewer, storm utils.
- Keep existing utilities active until new utilities are constructed.
- Private Utilities may reach out to customers.
- Water, Sewer, Storm, Electric disruptions will be announced in advance.



# Large-Scale Construction Impacts

*Be Alert!*



Shelburne St.  
**Roundabout**  
BURLINGTON, VT.

## Ledge/Bedrock

- Shallow in places.
- Ledge is geologically hard.

## Transportation Management

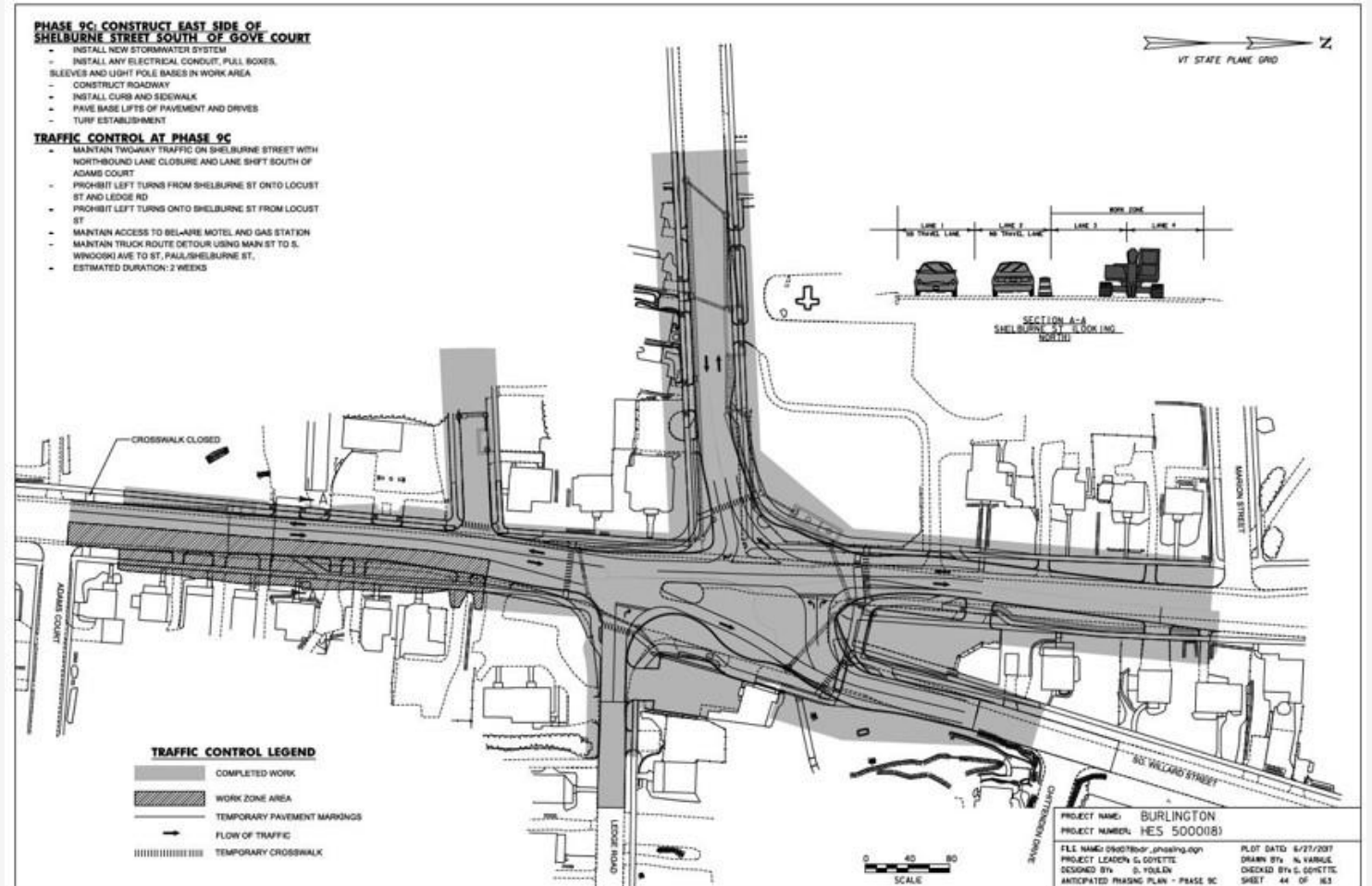
- Many construction phases.
- Multiple construction crews simultaneously working.
- Maintain open access to drives to residences and businesses.

# Challenges to Implementation

## No Small Feats

### Transportation Management

- Maintain pedestrian and bicycle accommodations through construction.
- Detours for certain construction phases.
- Restrict Left Turns during construction (for certain phases).
- Comprehensive Construction Phasing/Sequencing Plan (photo).
- Coordinate with CKS for potential alternative student drop-off/pick-up.
- New temporary crosswalk crossing Shelburne Street at Adams Court.
- Dust will be controlled/managed.



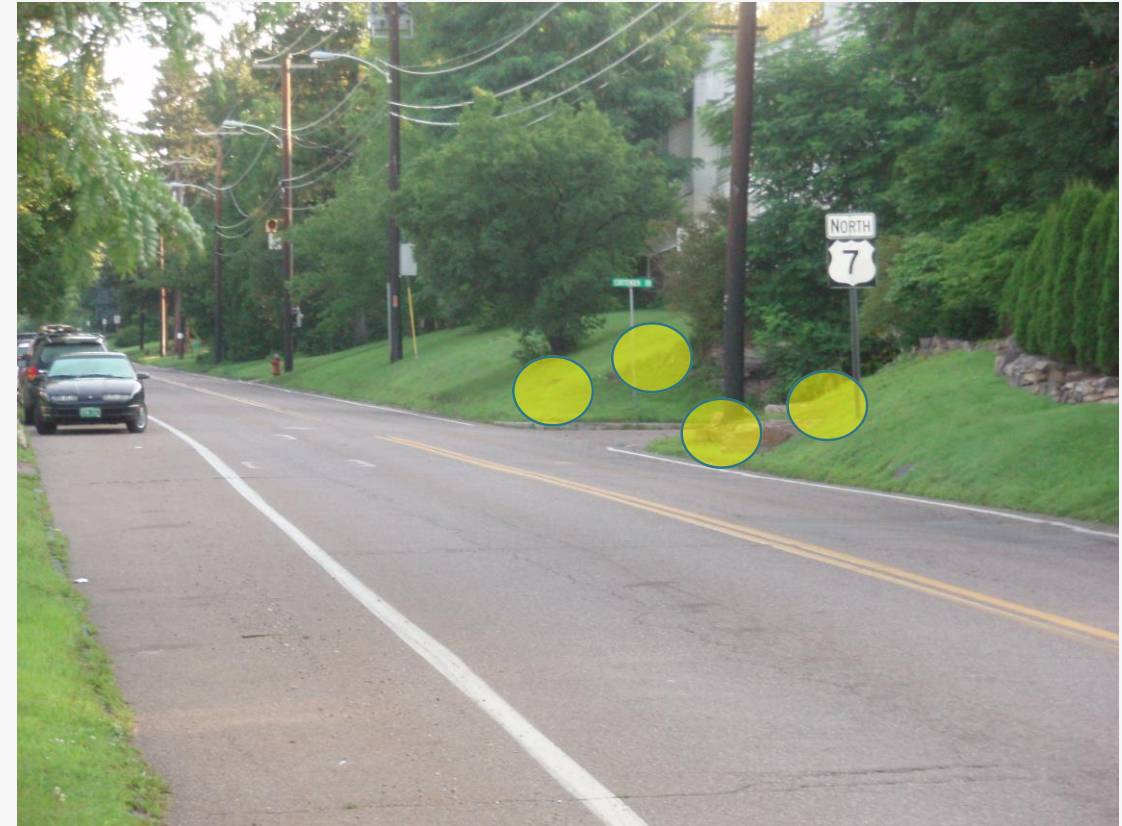


# Challenges to Implementation

## *No Small Feats*

### Ledge/Bedrock

- Borings located it at depths of 2'-17' generally. Several knobs visible at surface throughout.
- Blasting and hammering anticipated.
- In close proximity of houses and businesses.



# Challenges to Implementation

## *No Small Feats*

### Ledge/Bedrock

- Pre-Blast Survey
  - Within 500' of the project limits.
  - SD Ireland personnel will document structural conditions prior to blasting or hammering activities.

### Construction Vibration Monitoring

- Pre-Construction Survey
  - Within 150' of the project limits
  - SD Ireland and Alpha Testing will document structural conditions prior to construction activities.



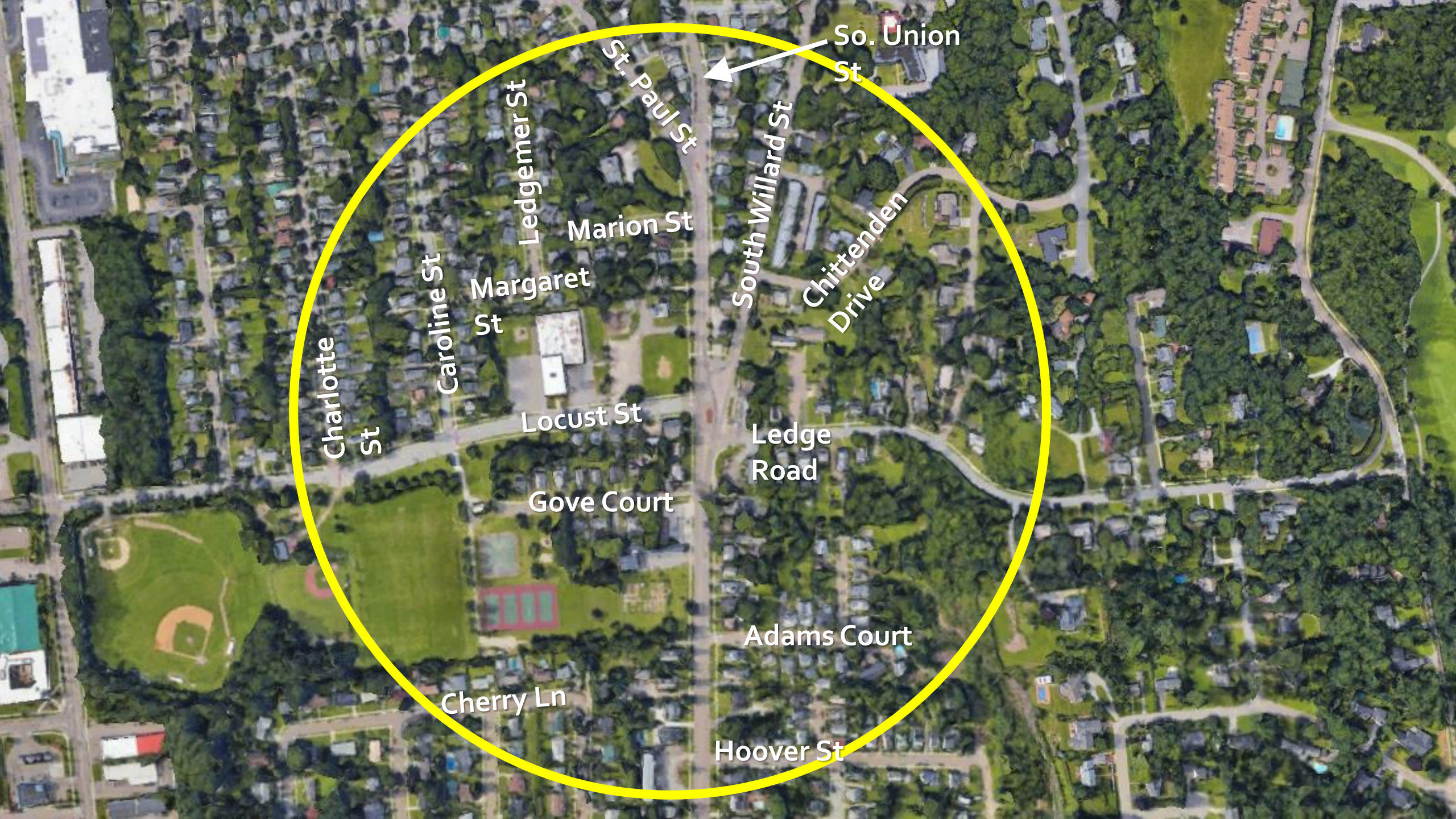
# Challenges to Implementation

## *No Small Feats*

### Ledge/Bedrock

- Pre-Blast/Construction Vibration Survey
  - If you live within, on, or touching this circle and are willing to provide SD Ireland contact information so that they can access your building or home to conduct the Pre-Blast & Construction Vibration Survey, please provide your information in the Q&A window in this webinar.
  - Or call the toll-free number or e-mail the team your information: (802) 496-8956
  - Your information will only be visible to project team staff and will not be shared; destroyed after completion of surveys.





So. Union St



St. Paul St

Ledgemer St

Marion St

South Willard St

Chittenden Drive

Margaret St

Charlotte St

Caroline St

Locust St

Ledge Road

Gove Court

Adams Court

Cherry Ln

Hoover St

# Public Outreach

## The Importance of Communication



### WSP USA, Inc.

- Hired by VTrans
- In direct communication with VTrans and DPW
- Will be participating in **WEEKLY** meetings with the construction contractor and VTrans construction staff
  - Issue weekly Construction Updates & Traffic Alerts
  - Manages Telephone Hotline & Project E-Mail
    - Take comments from public
    - Responds to questions directly or distributes to appropriate party for response
  - Maintain the project website & info materials
  - Door-to-door outreach in advance of utility outages

This is the **FASTEST** path for information to residents, businesses and commuters.

### Shelburne Street Roundabout Project



# Questions?



## For those joining us by computer or web browser

Please enter questions in the Q&A Window. The button appears the bottom of the screen - please include your email address



## For those joining us by phone

Press \*9 to raise your hand to be called on by the host. When directed by the host, please press \*6 to unmute yourself



## For those joining us in person

Please raise your hand and a member of our team will alert you when it is your turn to speak

# Stay Involved



Visit the Project Website:

<https://vtrans.vermont.gov/projects/burlington-roundabout>

**Sign Up Here for E-Mail Notifications on Construction Updates and Traffic Alerts**



Email Us:

[info@shelburnestreetroundabout.com](mailto:info@shelburnestreetroundabout.com)



Call the 24-Hour Project Hotline:

802-496-8956