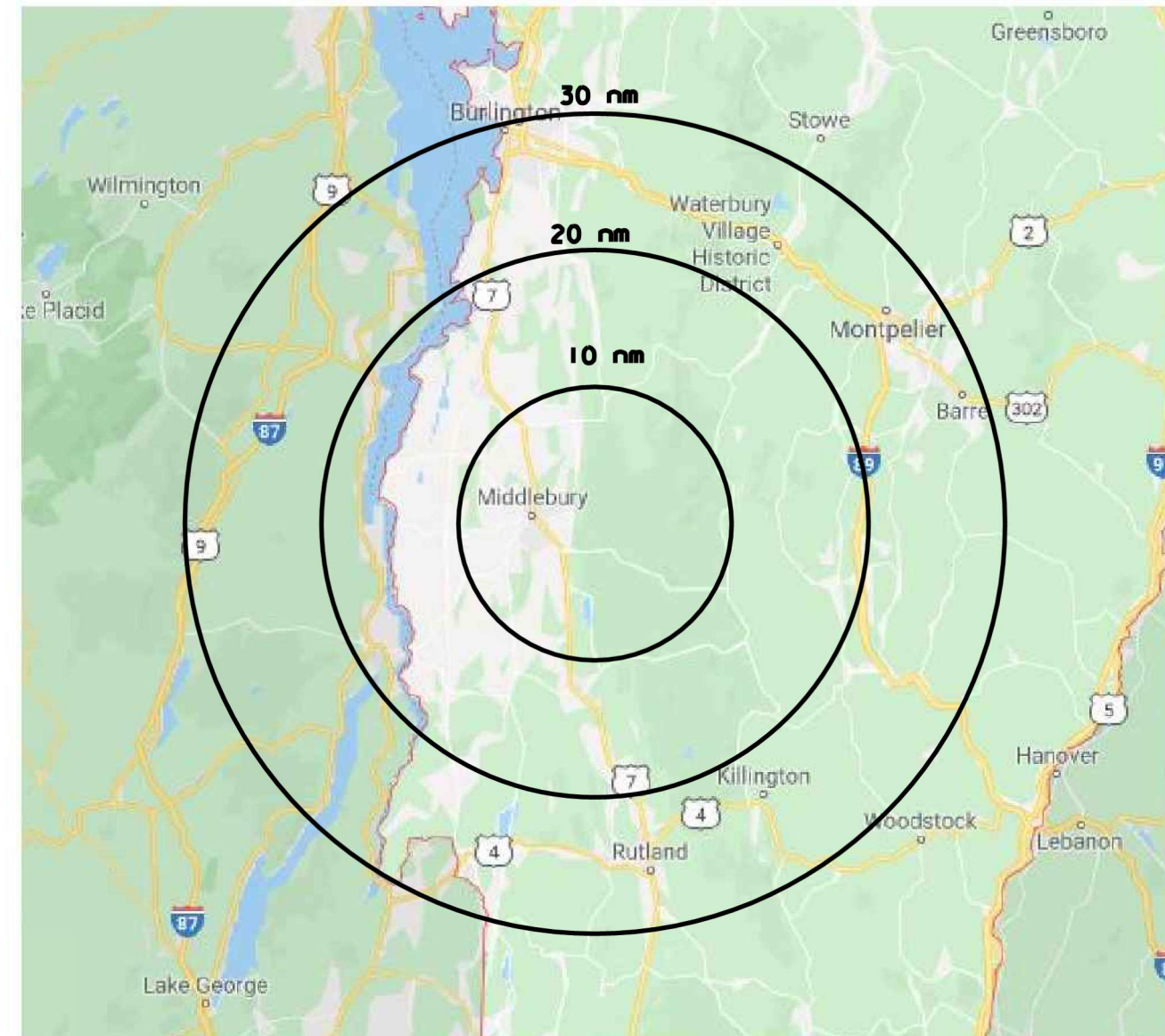
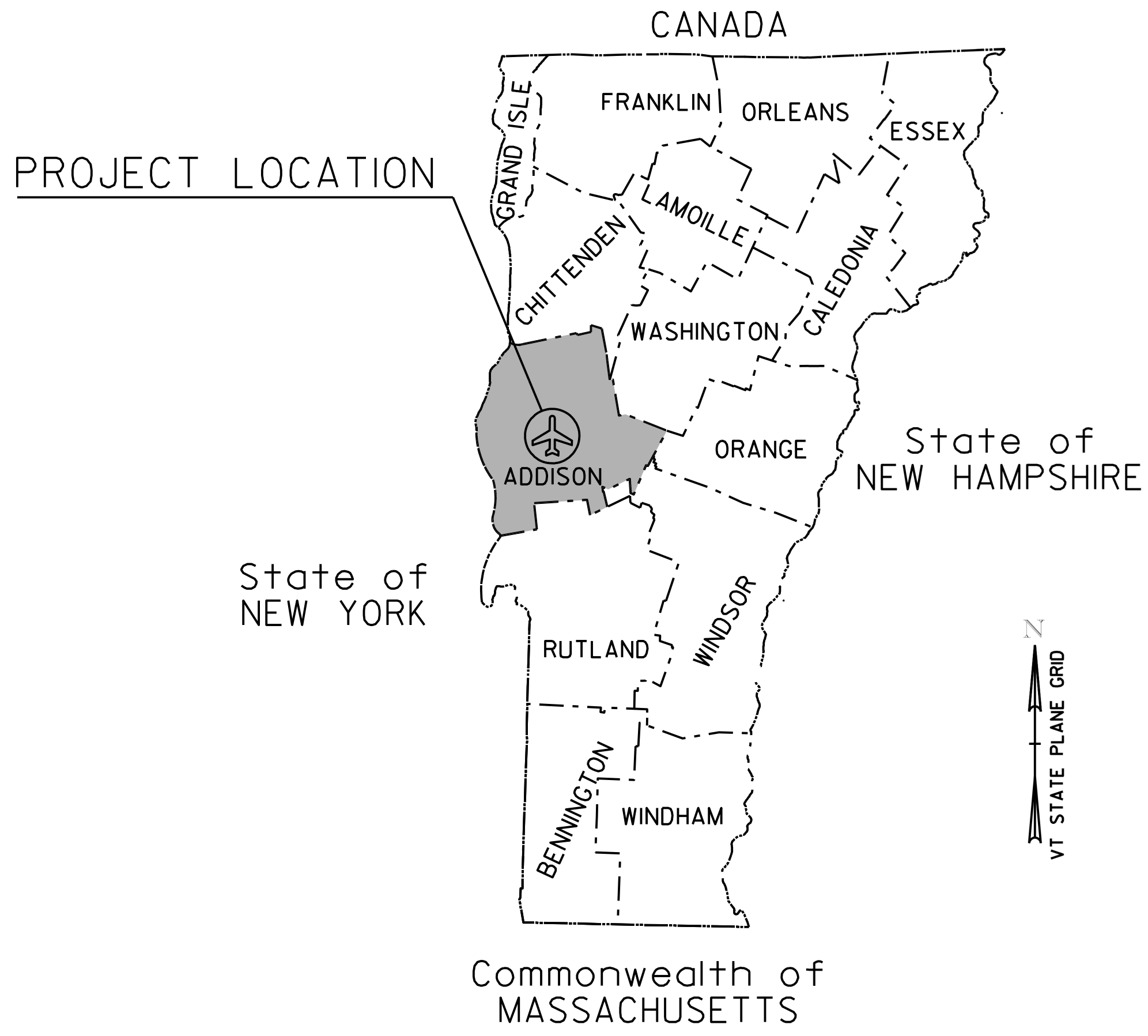


# VERMONT AGENCY OF TRANSPORTATION MIDDLEBURY STATE AIRPORT (6B0) AIRPORT LAYOUT PLAN AUGUST 2023

## SPACE RESERVED FOR FAA APPROVAL



SHEET INDEX		
SHEET NO.	DESCRIPTION	REVISION DATE
I	TITLE SHEET	
2	AIRPORT DATA SHEET	
3	EXISTING AIRPORT LAYOUT PLAN	
4	FUTURE AIRPORT LAYOUT PLAN	
5	AIRPORT AIRSPACE LAYOUT PLAN	
6	RUNWAY 19 APPROACH PLAN	
7	RUNWAY 1 APPROACH PLAN	
8	OBSTRUCTION DATA SHEET	
9	TERMINAL AREA PLAN	
10	LAND USE PLAN	
II	AIRPORT PROPERTY MAP	

VERMONT AGENCY OF TRANSPORTATION  
APPROVED: Daniel Delabriere DATE: 11/2/2023

REVISIONS			
NO.	Description	Date	By



PROJECT NAME: AIRPORT LAYOUT PLAN  
PROJECT NUMBER: MIDDLEBURY-AV-FY21-002  
FILE NAME: 061210+title.dgn  
PROJECT LEADER: POM  
DESIGNED BY: AJF  
TITLE SHEET

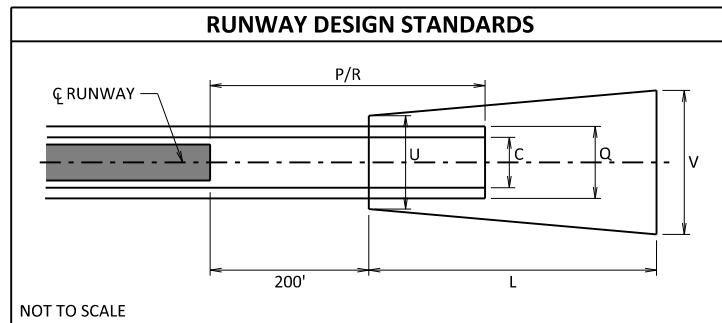
PLOT DATE: 9/5/2023  
DRAWN BY: MED  
CHECKED BY: POM  
SHEET I OF II

FILE NAME: N:\p\projects\ANN\KS\_061210\_2023\09\_Design\Drawings\Aviation\Consultants\061210+title.dgn  
DATE/TIME: 9/5/2023 10:46:56  
USER: 4066

AIRPORT DATA		
MIDDLEBURY STATE AIRPORT 467 Airport Road Middlebury, VT 05753		
ITEM	Existing	Future
AIRPORT OWNER	Vermont Agency of Transportation	
STATE SERVICE LEVEL	Category 2 Airport	
NPIAS SERVICE LEVEL	Local	
AIRPORT REFERENCE CODE / CRITICAL AIRCRAFT	B-I (Small) / Cessna 421	B-I (Small) / Cessna 421
MEAN MAXIMUM TEMPERATURE OF HOTTEST MONTH	80°F (July)	
AIRPORT ELEVATION (MSL) NAVD 88	494 FT	
MAGNETIC DECLINATION	13° 51' W ± 0° 23' changing by 0° 4' E per year	
AIRPORT REFERENCE POINT (NAD 83)	LAT: 43° 59' 11.32"N Long: 73° 5' 43.98"W	LAT: 43° 59' 11.32"N Long: 73° 5' 43.98"W
AIRPORT NAVIGATIONAL AIDS AND MISCELLANEOUS FACILITIES	AWOS-3, Lighted Wind Indicator / Segmented Circle	

Note 1: Vermont Airport System Plan  
Note 2: National Plan of Integrated Airport Systems (NPIAS)

RUNWAY SAFETY AREA DATA			
DESCRIPTION		RUNWAY 1-19	
		EXISTING/FUTURE	
RUNWAY SAFETY AREA (RSA)	(R) LENGTH BEYOND RUNWAY END	240 FT	240 FT
	(P) LENGTH PRIOR TO RUNWAY END	240 FT	240 FT
	(C) WIDTH	120 FT	120 FT
RUNWAY OBJECT FREE AREA (ROFA)	(R) LENGTH BEYOND RUNWAY END	240 FT	240 FT
	(P) LENGTH PRIOR TO RUNWAY END	240 FT	240 FT
	(Q) WIDTH	250 FT	250 FT
APPROACH RUNWAY PROTECTION ZONE (RPZ)	(L) LENGTH	1,000 FT	1,000 FT
	(U) INNER WIDTH	500 FT	500 FT
	(V) OUTER WIDTH	700 FT	700 FT
DEPARTURE RUNWAY PROTECTION ZONE (RPZ)	(L) LENGTH	1,000 FT	1,000 FT
	(U) INNER WIDTH	250 FT	250 FT
	(V) OUTER WIDTH	450 FT	450 FT
RUNWAY OBSTACLE FREE ZONE (ROFZ)	LENGTH BEYOND RUNWAY END	200 FT	200 FT
	WIDTH	250 FT	250 FT



EXISTING OBSTACLE CLEARANCE SURFACES (OCS)							
RUNWAY	ROW/TYPE	SLOPE	DIM. A	DIM. B	DIM. C	DIM. D	DIM. E
1	2	20:1	250 FT	700 FT	2,250 FT	2,750 FT	N/A
19	2	20:1	250 FT	700 FT	2,250 FT	2,750 FT	N/A

Source: FAA Advisory Circular 150/5300-13B

FUTURE OBSTACLE CLEARANCE SURFACES (OCS)							
RUNWAY	ROW/TYPE	SLOPE	DIM. A	DIM. B	DIM. C	DIM. D	DIM. E
1	2	20:1	250 FT	700 FT	2,250 FT	2,750 FT	N/A
	4	20:1	200 FT	400 FT	3,400 FT	10,000 FT	N/A
	7	40:1	60 FT	470 FT	7,512 FT	12,152 FT	6,160 FT
19	2	20:1	250 FT	700 FT	2,250 FT	2,750 FT	N/A
	4	20:1	200 FT	400 FT	3,400 FT	10,000 FT	N/A
	7	40:1	60 FT	470 FT	7,512 FT	12,152 FT	6,160 FT

Source: FAA Advisory Circular 150/5300-13B

DESCRIPTION	RUNWAY DATA				
	EXISTING		FUTURE		
	1	19	1	19	
RUNWAY LENGTH	3,206 FT		3,206 FT		
RUNWAY WIDTH	60 FT		60 FT		
PAVEMENT TYPE / SURFACE TYPE	ASPHALT		ASPHALT		
PAVEMENT CONDITION	GOOD		GOOD		
PAVEMENT CONDITION NUMBER	N/A		N/A		
PAVEMENT STRENGTH (SINGLE)	12,500 LBS		12,500 LBS		
PAVEMENT STRENGTH (DUAL)	N/A		N/A		
EFFECTIVE RUNWAY GRADIENT	0.4%		0.4%		
MAXIMUM RUNWAY GRADIENT	0.0%		0.0%		
RUNWAY MEETS LINE OF SIGHT REQUIREMENTS? (YES/NO)	YES		YES		
APPROACH TYPE	VISUAL	VISUAL	NON-PRECISION	NON-PRECISION	
APPROACH VISIBILITY MINIMUM	N/A		1-MILE		
RUNWAY CATEGORY (14 CFR PART 77) / SLOPE	VISUAL / 20:1	VISUAL / 20:1	NON-PRECISION / 20:1	NON-PRECISION / 20:1	
DESIGN AIRCRAFT	CESSNA 421		CESSNA 421		
RUNWAY DESIGN CODE (RDC)	B-I (Small)-VIS		B-I (Small)-5000		
APPROACH RUNWAY REFERENCE CODE (APRC)	B / I(S) / VIS	B / I(S) / VIS	B / I(S) / 5000	B / I(S) / 5000	
DEPARTURE RUNWAY SURFACE	NO		YES		
OBSTACLE CLEARANCE SURFACE (EB 99A TABLE 3-2)	SEE OCS TABLE		SEE OCS TABLE		
TOUCHDOWN ZONE ELEVATION	485 FT	485 FT	485 FT	485 FT	
HORIZONTAL / VERTICAL DATUM	NAD 83 / NAVD 88	NAD 83 / NAVD 88	NAD 83 / NAVD 88	NAD 83 / NAVD 88	
AERONAUTICAL SURVEY	NVG		VGS		
RUNWAY MARKINGS	NON-PRECISION		NON-PRECISION		
RUNWAY LIGHTING	NONE		MIRL		
APPROACH LIGHTING	NONE		PAPI		
INSTRUMENT & NAVIGATIONAL AIDS	NONE		RNAV (GPS)		
DISPLACED THRESHOLD COORDINATES & ELEVATIONS	LATITUDE	43° 58' 56.87"N	N/A	43° 58' 56.87"N	N/A
	LONGITUDE	73° 05' 43.22"W	N/A	73° 05' 43.22"W	N/A
	DISTANCE	141 Ft	N/A	141 Ft	N/A
	ELEVATION	485.3 FT	N/A	485.3 FT	N/A
	RUNWAY END COORDINATES & ELEVATIONS	LATITUDE	43° 58' 55.48"N	43° 59' 27.12"N	43° 58' 55.48"N
DECLARED DISTANCES	LONGITUDE	73° 05' 43.15"W	73° 05' 44.82"W	73° 05' 43.15"W	73° 05' 44.82"W
	ELEVATION	484.8 FT	484.8 FT	484.8 FT	484.8 FT
	TORA	3,206 FT	3,206 FT	3,206 FT	3,206 FT
	TODA	3,206 FT	3,206 FT	3,206 FT	3,206 FT
	ASDA	3,206 FT	3,065 FT	3,206 FT	3,065 FT
	LDA	3,065 FT	3,065 FT	3,065 FT	3,065 FT
	CLEARWAY	N/A	N/A	N/A	N/A
STOPWAY	N/A	N/A	N/A	N/A	

TAXIWAY DATA					
TAXIWAY NAME	TAXIWAY LIGHTING	TAXIWAY DESIGN GROUP	TAXIWAY WIDTH	TAXIWAY SAFETY AREA	TAXIWAY OBJECT FREE AREA
	EXISTING/FUTURE	EXISTING/FUTURE	EXISTING/FUTURE	EXISTING/FUTURE	EXISTING/FUTURE
A	NONE	1B	25 FT	49 FT	89 FT
A1	NONE	1B	25 FT	49 FT	89 FT
A2	NONE	1B	25 FT	49 FT	89 FT
A3	NONE	1B	25 FT	49 FT	89 FT
A4	NONE	1B	25 FT	49 FT	89 FT

MODIFICATIONS TO FAA DESIGN STANDARDS			
APPROVAL DATE	AIRSPACE CASE NO.	MODIFIED STANDARD	DESCRIPTION
NONE			

ALL WEATHER WIND COVERAGE		
RUNWAY	10.5 KNOTS	13 KNOTS
1-19	99.42%	99.75%

VFR WEATHER WIND COVERAGE		
RUNWAY	10.5 KNOTS	13 KNOTS
1-19	99.42%	99.75%

IFR WEATHER WIND COVERAGE		
RUNWAY	10.5 KNOTS	13 KNOTS
1-19	99.41%	99.77%

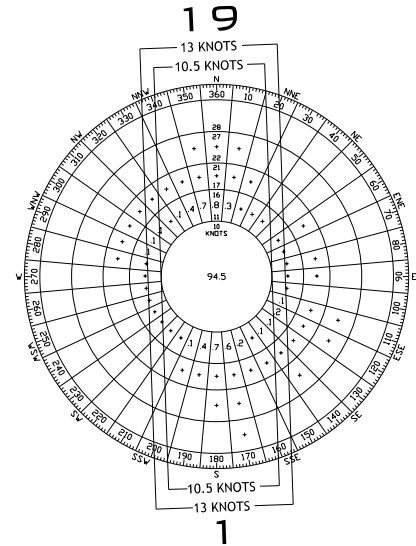
Data Source:  
NOAA National Climatic Center  
Asheville, NC  
Middlebury State Airport  
Middlebury, VT 05753  
Station 721028  
Reporting Period: 2012 - 2020

REVISIONS			
NO.	Description	Date	By

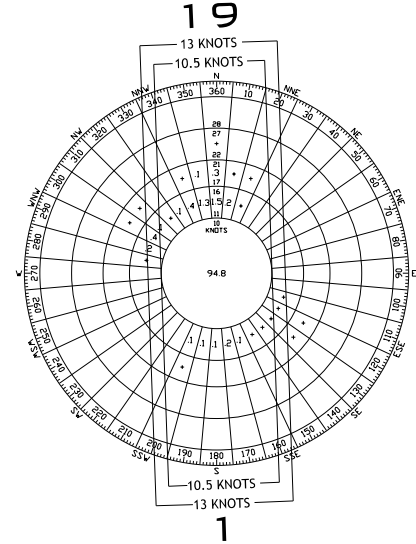


PROJECT NAME: AIRPORT LAYOUT PLAN  
PROJECT NUMBER: MIDDLEBURY-AV-FY21-002  
FILE NAME: 061210data.dgn  
PROJECT LEADER: POM  
DESIGNED BY: AJF  
AIRPORT DATA SHEET  
PLOT DATE: 9/5/2023  
DRAWN BY: MED  
CHECKED BY: POM  
SHEET 2 OF 11

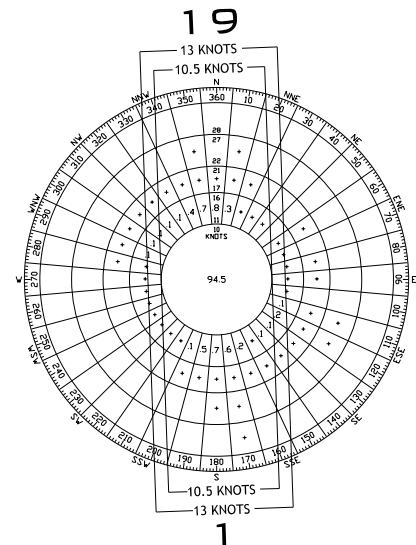
### ALL-WEATHER WIND COVERAGE



### IFR CONDITION WIND COVERAGE



### VFR CONDITION WIND COVERAGE

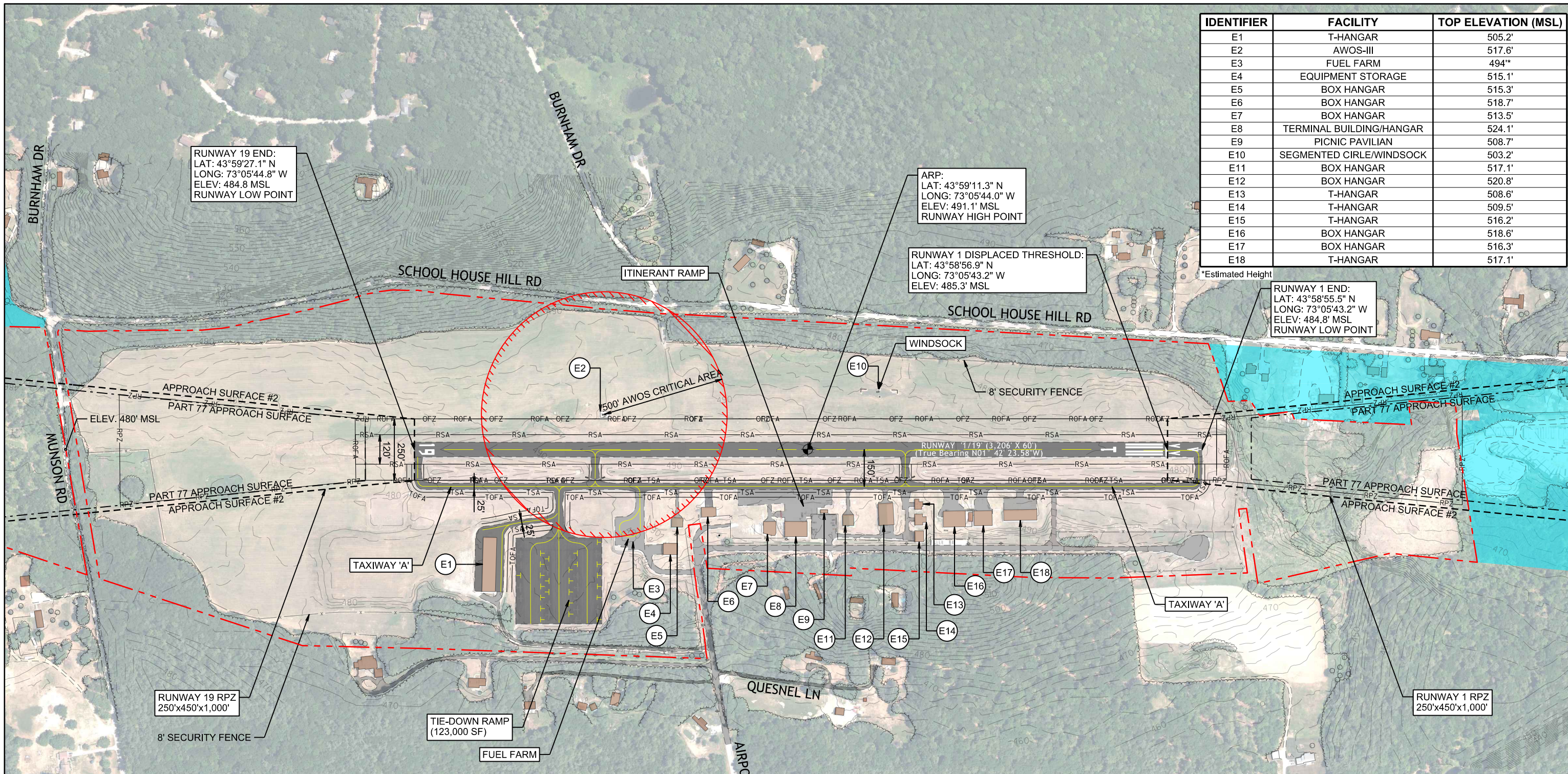


FILE NAME = V:\Projects\ANY\KS\061210\000\01\_Design\Drawings\Aviation\061210data.dgn  
DATE/TIME = 9/5/2023 11:26:23  
USER = 4066



IDENTIFIER	FACILITY	TOP ELEVATION (MSL)
E1	T-HANGAR	505.2'
E2	AWOS-III	517.6'
E3	FUEL FARM	494**
E4	EQUIPMENT STORAGE	515.1'
E5	BOX HANGAR	515.3'
E6	BOX HANGAR	518.7'
E7	BOX HANGAR	513.5'
E8	TERMINAL BUILDING/HANGAR	524.1'
E9	PICNIC PAVILIAN	508.7'
E10	SEGMENTED CIRLE/WINDSOCK	503.2'
E11	BOX HANGAR	517.1'
E12	BOX HANGAR	520.8'
E13	T-HANGAR	508.6'
E14	T-HANGAR	509.5'
E15	T-HANGAR	516.2'
E16	BOX HANGAR	518.6'
E17	BOX HANGAR	516.3'
E18	T-HANGAR	517.1'

\*Estimated Height



RUNWAY 19 END:  
LAT: 43°59'27.1" N  
LONG: 73°05'44.8" W  
ELEV: 484.8 MSL  
RUNWAY LOW POINT

ARP:  
LAT: 43°59'11.3" N  
LONG: 73°05'44.0" W  
ELEV: 491.1' MSL  
RUNWAY HIGH POINT

RUNWAY 1 DISPLACED THRESHOLD:  
LAT: 43°58'56.9" N  
LONG: 73°05'43.2" W  
ELEV: 485.3' MSL

RUNWAY 1 END:  
LAT: 43°58'55.5" N  
LONG: 73°05'43.2" W  
ELEV: 484.8' MSL  
RUNWAY LOW POINT

RUNWAY 19 RPZ  
250'x450'x1,000'

TIE-DOWN RAMP  
(123,000 SF)

RUNWAY 1 RPZ  
250'x450'x1,000'

**LEGEND**

- RSA — **RUNWAY SAFETY AREA (RSA)**
- ROFA — **RUNWAY OBJECT FREE AREA (ROFA)**
- ROFZ — **RUNWAY OBSTACLE FREE ZONE (ROFZ)**
- RPZ — **RUNWAY PROTECTION ZONE (RPZ)**
- X — **FENCE**
- 500 — **ELEVATIONS CONTOURS**
- TREE LINE — **TREE LINE**
- AIRPORT PROPERTY LINES — **AIRPORT PROPERTY LINES**
- PART 77 APPROACH SURFACE — **PART 77 APPROACH SURFACE**
- EXISTING BUILDING — **EXISTING BUILDING**
- AIRFIELD PAVEMENT — **AIRFIELD PAVEMENT**
- EXISTING AVIGATION EASEMENTS — **EXISTING AVIGATION EASEMENTS**
- NAVAID CRITICAL AREA — **NAVAID CRITICAL AREA**
- SURVEY MARKER — **SURVEY MARKER**
- AIRPORT REFERENCE POINT (ARP) — **AIRPORT REFERENCE POINT (ARP)**
- EXISTING WINDCONE — **EXISTING WINDCONE**



**N**  
MAGNETIC DECLINATION:  
13° 51' W ± 0° 23'  
CHANGING BY 0° 4' E/YEAR  
ON JANUARY 2022

REVISIONS			
NO.	Description	Date	By



PROJECT NAME: AIRPORT LAYOUT PLAN  
PROJECT NUMBER: MIDDLEBURY-AV-FY21-002  
FILE NAME: 061210existing\_layout\_plan.dgn PLOT DATE: 9/5/2023  
PROJECT LEADER: POM DRAWN BY: MED  
DESIGNED BY: AJF CHECKED BY: POM  
EXISTING AIRPORT LAYOUT PLAN SHEET 3 OF 11

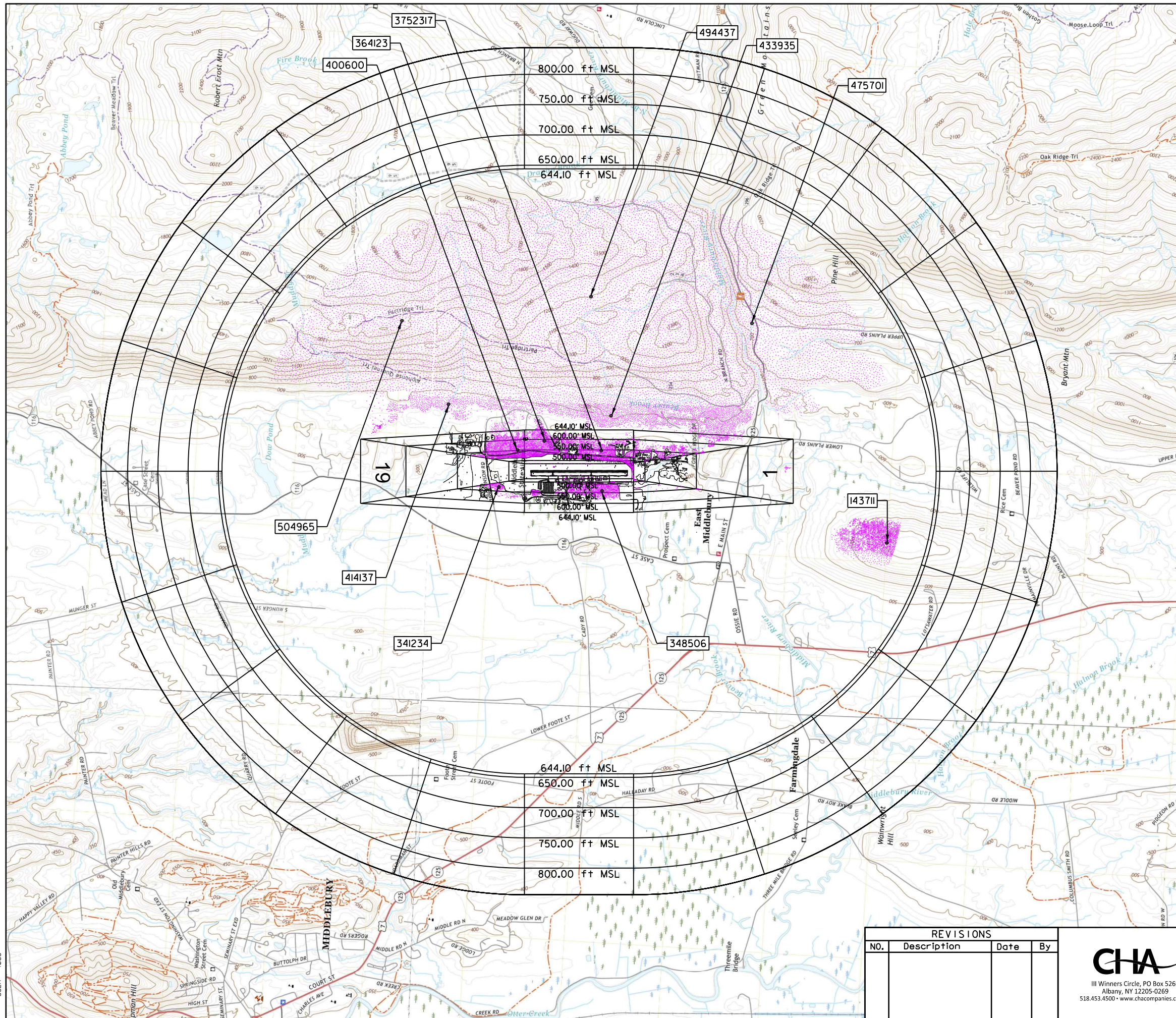
FILE NAME: N:\Projects\ANN\K5\061210\000\01\_Design\Drawings\Aviation\061210existing\_layout\_plan.dgn  
DATE/TIME: 9/5/2023 10:26:23  
USER: 4066





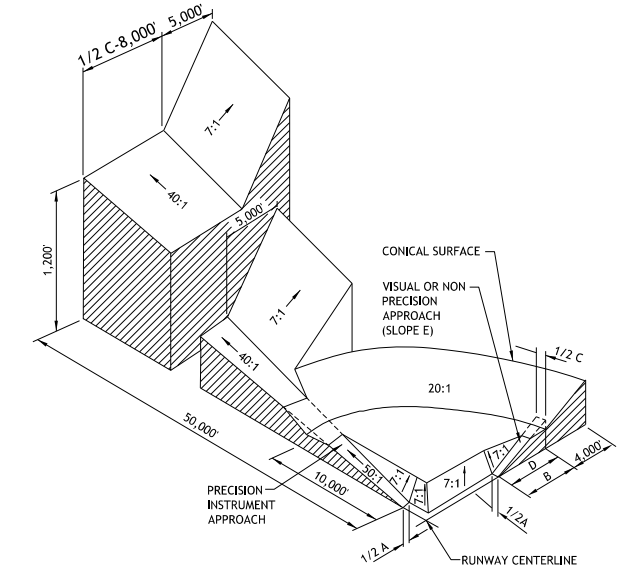


FILE NAME = V:\Projects\ANY\KS\061210\000\09\_Design\Drawings\Aviation\Consultants\061210\air-space.layout.dgn  
 DATE / TIME = 9/5/2023 2:28:23  
 USER = 4066



DIM	ITEM	VISUAL RUNWAY		NON-PRECISION INSTRUMENT RUNWAY			PRECISION INSTRUMENT RUNWAY
		A	B	A	B	D	
A	WIDTH OF PRIMARY SURFACE AND APPROACH SURFACE WIDTH AT INNER END	250	500	500	500	1,000	1,000
B	RADIUS OF HORIZONTAL SURFACE	5,000	5,000	5,000	10,000	10,000	10,000
C	APPROACH SURFACE WIDTH AT END	1,250	1,500	2,000	3,500	4,000	16,000
D	APPROACH SURFACE LENGTH	5,000	5,000	5,000	10,000	10,000	50,000*
E	APPROACH SLOPE	20:1	20:1	20:1	34:1	34:1	50:1 / 40:1*

A - UTILITY RUNWAYS  
 B - RUNWAYS LARGER THAN UTILITY  
 C - VISIBILITY MINIMUMS GREATER THAN 3/4 MILES  
 D - VISIBILITY MINIMUMS AS LOW AS 3/4 MILE  
 \* - PRECISION INSTRUMENT APPROACH SLOPE IS 50:1 FOR INNER 10,000 FT. AND 40:1 FOR AN ADDITIONAL 40,000 FT.



ISOMETRIC VIEW OF SECTION  
 77.25 CIVIL AIRPORT IMAGINARY SURFACES

PART 77 SAMPLE OBSTRUCTION POINTS					
PT#	OBJECT	OBJ. ELEV	P77 SURFACE	P77 SURFACE ELEV.	P77 PENETRATION (FT.)
400600	TREE	618.759	TRANSITIONAL	555.791	62
364123	TREE	628.325	TRANSITIONAL	592.648	35
375251	TREE	588.055	TRANSITIONAL	546.87	41
348506	TREE	587.436	TRANSITIONAL	541.455	45
341234	TREE	565.36	TRANSITIONAL	547.386	17
414137	TREE	656.865	HORIZONTAL	644.14	12
433935	TREE	672.646	HORIZONTAL	644.14	28
504965	TREE	1526.758	CONICAL	715.019	811
494437	TREE	1275.252	CONICAL	682.768	592
475701	TREE	829.449	CONICAL	707.349	122
143711	TREE	886.29	CONICAL	829.086	57

**LEGEND**

- PART 77 SAMPLE OBSTRUCTION POINT
- OBSTRUCTION POINT



MAGNETIC DECLINATION:  
 13° 51' W ± 0° 23'  
 CHANGING BY 0° 4' E/YEAR  
 ON JANUARY 2022

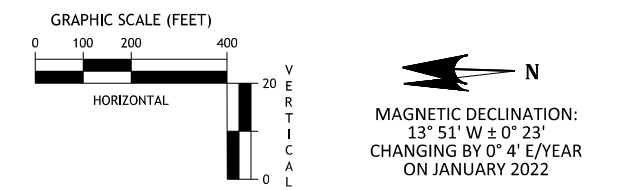
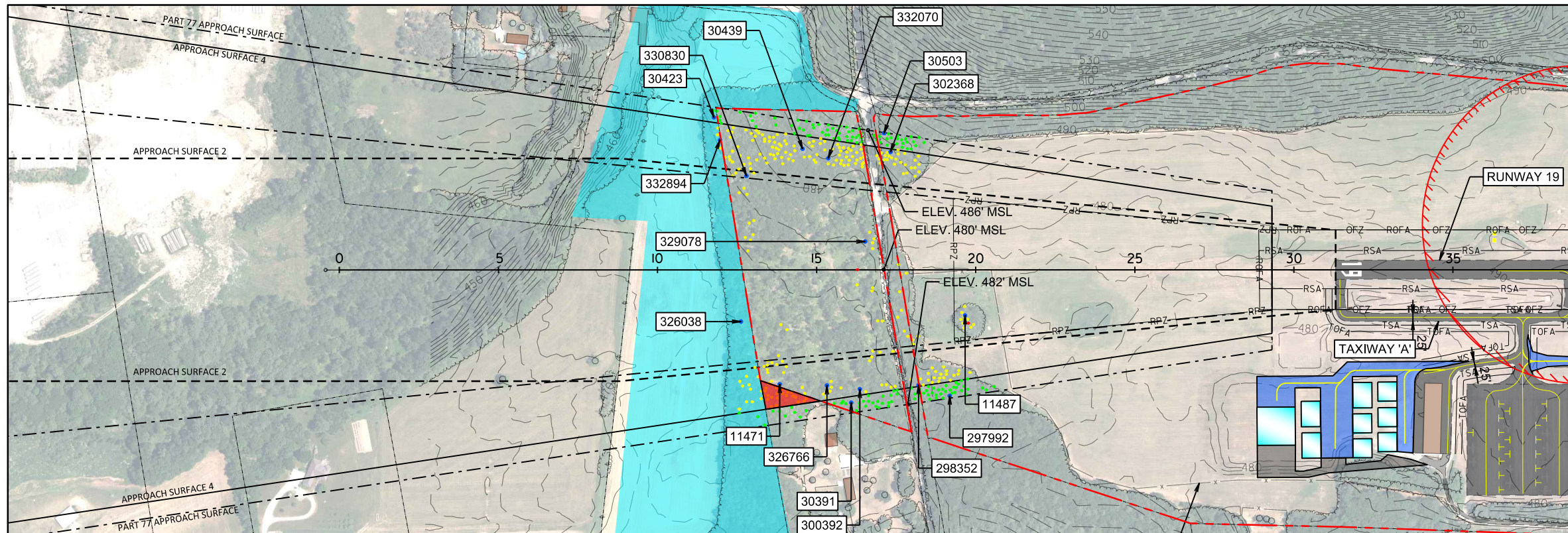


REVISIONS			
NO.	Description	Date	By

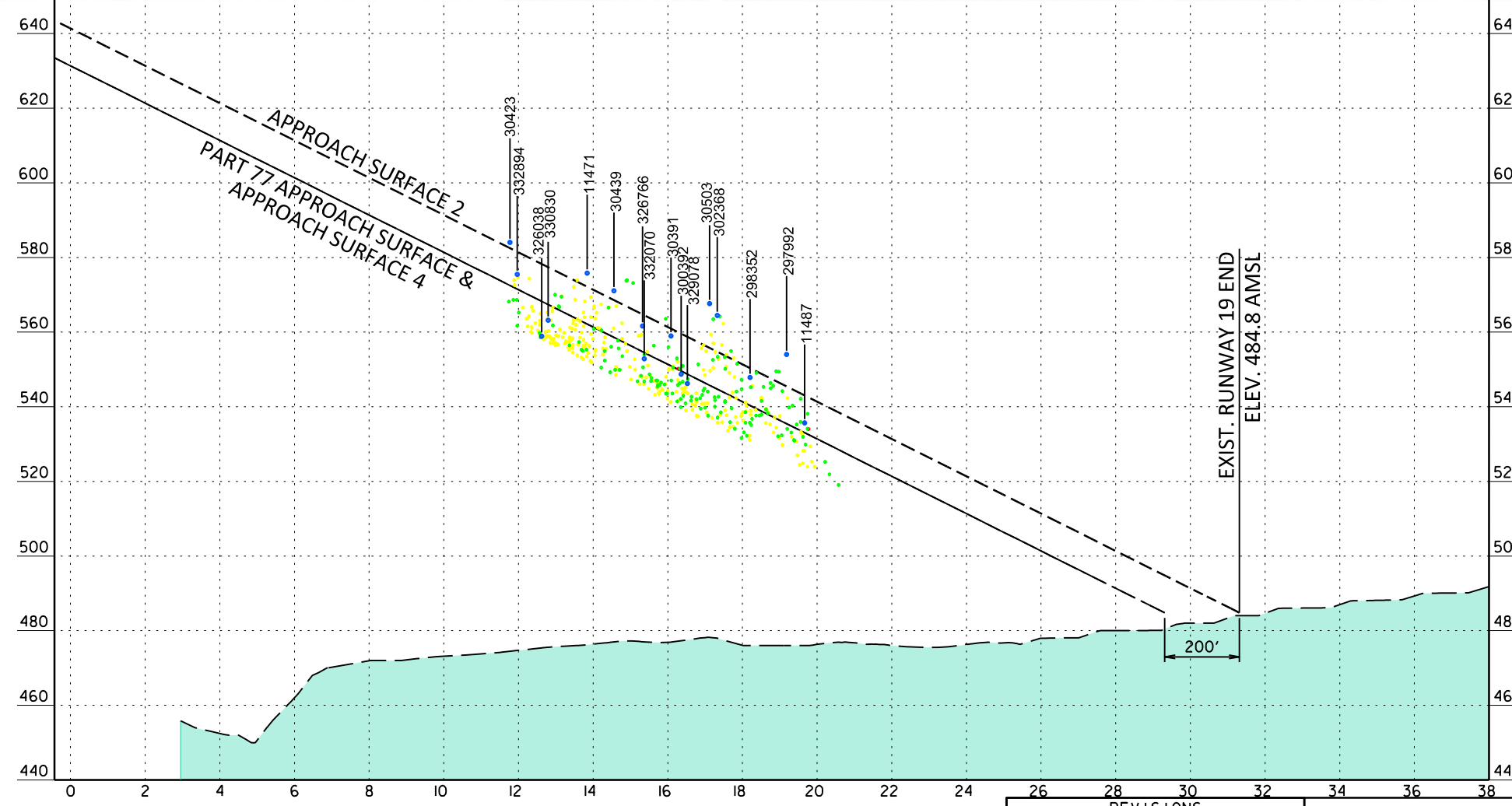


PROJECT NAME: AIRPORT LAYOUT PLAN  
 PROJECT NUMBER: MIDDLEBURY-AV-FY21-002  
 FILE NAME: 061210air-space.layout.dgn  
 PROJECT LEADER: POM  
 DESIGNED BY: AJF  
 AIRPORT AIRSPACE LAYOUT PLAN  
 PLOT DATE: 9/5/2023  
 DRAWN BY: MED  
 CHECKED BY: POM  
 SHEET 5 OF 11





- EXISTING BUILDING
- EXISTING AIRFIELD PAVEMENT
- EXISTING AVIGATION EASEMENTS
- BUILDING IMPROVEMENTS
- BUILDING REMOVAL
- FUTURE AVIGATION EASEMENTS
- AIRFIELD PAVEMENT
- AIRFIELD PAVEMENT REMOVAL
- RUNWAY SAFETY AREA (RSA)
- RUNWAY OBJECT FREE AREA (ROFA)
- RUNWAY OBSTACLE FREE ZONE (ROFZ)
- RUNWAY PROTECTION ZONE (RPZ)
- ILS CRITICAL AREA
- FENCE
- 500 ELEVATIONS CONTOURS
- TREE LINE
- AIRPORT PROPERTY LINES
- APPROACH SURFACE #2
- APPROACH SURFACE #4
- PART 77 APPROACH SURFACE
- APPROACH SURFACE 2 OBSTRUCTIONS
- APPROACH SURFACE 4 OBSTRUCTIONS
- PART 77 APPROACH SURFACE OBSTRUCTIONS
- XXXXX SAMPLE POINT OBSTRUCTIONS



- NOTES:**
1. OBSTRUCTION SURVEY DATA WAS PROVIDED BY QUANTUM SPATIAL ON 11-16-2019. SURVEY DATA FEATURE ACCURACY IS IN ACCORDANCE WITH REQUIREMENTS OF FAA AC 150/5300-18B, "GENERAL GUIDANCE AND SPECIFICATIONS FOR SUBMISSION OF AERONAUTICAL SURVEYS TO NGS: FIELD DATA COLLECTION AND GEOGRAPHIC INFORMATION SYSTEM (GIS) STANDARDS. OBSTRUCTION DATA SHOWN WAS COLLECTED IN THE RUNWAY APPROACHES, ONLY.
  2. DUE TO THE LARGE QUANTITY OF OBSTRUCTIONS POINTS, ONLY SAMPLE POINTS WITH THEIR CORRESPONDING IDENTIFIER ARE SHOWN. SHEET 7 PROVIDES THE DATA OBSTRUCTION TABLES FOR THE RUNWAY 35 SAMPLE POINTS. THE COMPLETE DATA FOR THIS RUNWAY IS AVAILABLE FOR REVIEW UNDER SEPARATE COVER.
  3. ROADWAY ELEVATIONS NOT INCLUDED AS PART OF THE OBSTRUCTION SURVEY DATA WERE GENERATED FROM GROUND CONTOUR ELEVATIONS. ROADWAY ELEVATIONS INCLUDE THE FAR PART 77 TRAVERSE WAY ADJUSTMENT.

REVISIONS			
NO.	Description	Date	By

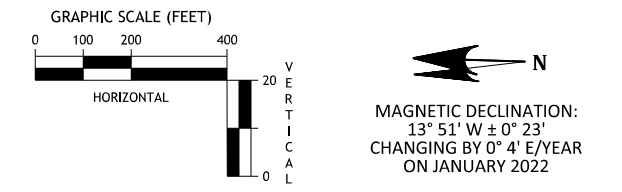
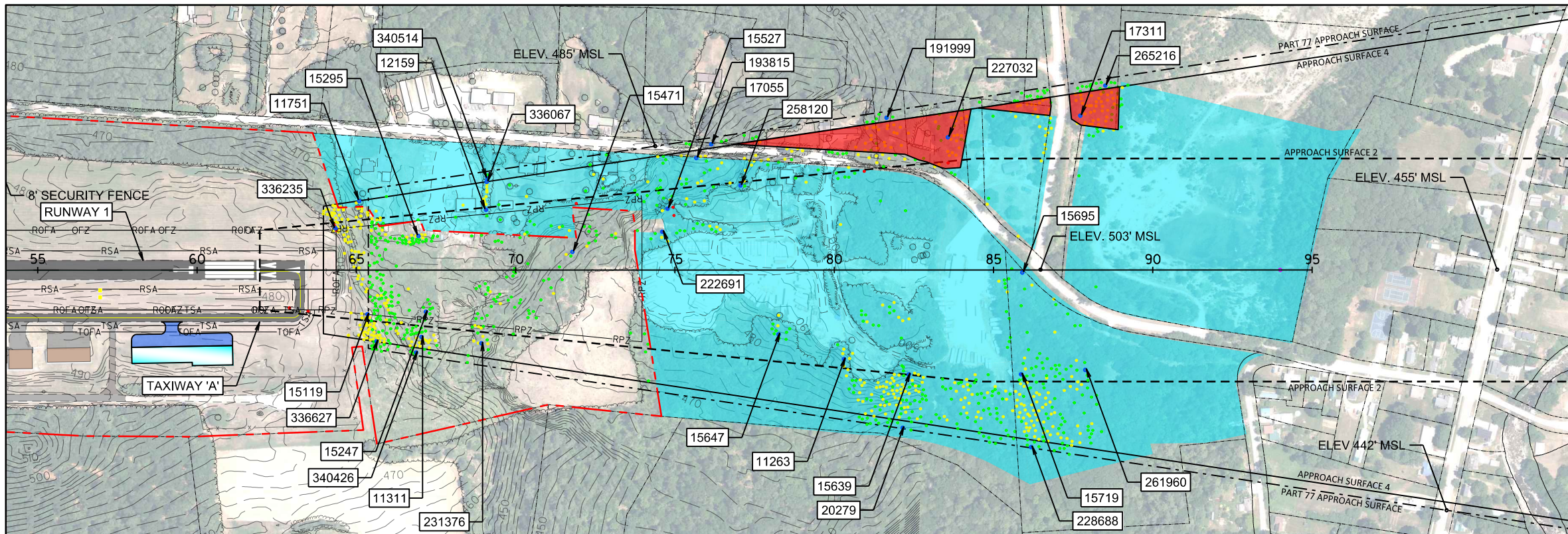


PROJECT NAME: AIRPORT LAYOUT PLAN  
 PROJECT NUMBER: MIDDLEBURY-AV-FY21-002  
 FILE NAME: 061210runway19.dgn  
 PROJECT LEADER: POM  
 DESIGNED BY: AJF  
 RUNWAY 19 APPROACH PLAN

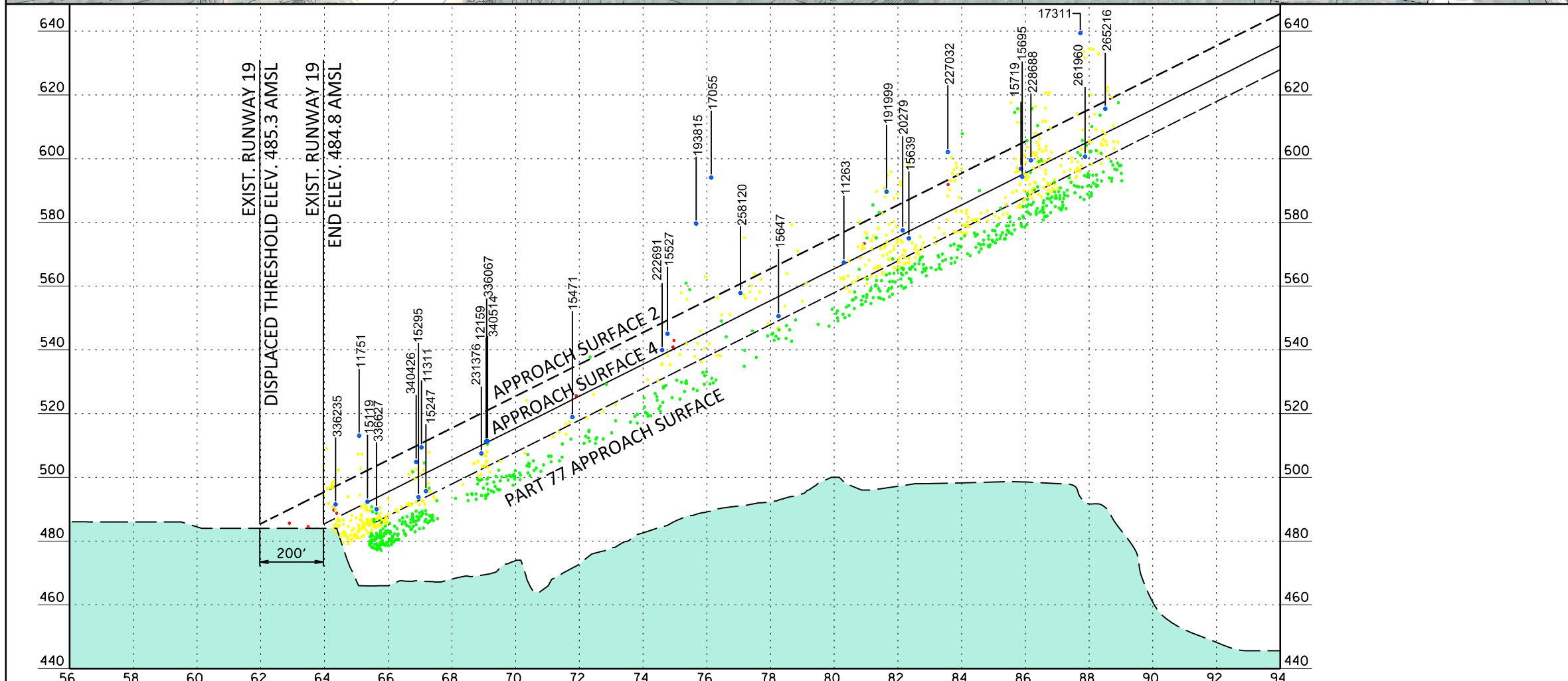
PLOT DATE: 9/5/2023  
 DRAWN BY: MED  
 CHECKED BY: POM  
 SHEET 6 OF 11

FILE NAME: N:\Projects\AVIATION\061210\000\01\_Design\Drawings\Aviation\061210runway19.dgn  
 DATE/TIME: 9/5/2023 10:26:23  
 USER: 4066





- EXISTING BUILDING
- EXISTING AIRFIELD PAVEMENT
- EXISTING AVIGATION EASEMENTS
- BUILDING IMPROVEMENTS
- BUILDING REMOVAL
- FUTURE AVIGATION EASEMENTS
- AIRFIELD PAVEMENT
- AIRFIELD PAVEMENT REMOVAL
- RUNWAY SAFETY AREA (RSA)
- RUNWAY OBJECT FREE AREA (ROFA)
- RUNWAY OBSTACLE FREE ZONE (ROFZ)
- RUNWAY PROTECTION ZONE (RPZ)
- ILS CRITICAL AREA
- FENCE
- ELEVATIONS CONTOURS
- TREE LINE
- AIRPORT PROPERTY LINES
- APPROACH SURFACE #2
- APPROACH SURFACE #4
- PART 77 APPROACH SURFACE
- APPROACH SURFACE 2 OBSTRUCTIONS
- APPROACH SURFACE 4 OBSTRUCTIONS
- PART 77 APPROACH SURFACE OBSTRUCTIONS
- XXXXX SAMPLE POINT OBSTRUCTIONS



- NOTES:**
1. OBSTRUCTION SURVEY DATA WAS PROVIDED BY QUANTUM SPATIAL ON 11-16-2019. SURVEY DATA FEATURE ACCURACY IS IN ACCORDANCE WITH REQUIREMENTS OF FAA AC 150/5300-18B, "GENERAL GUIDANCE AND SPECIFICATIONS FOR SUBMISSION OF AERONAUTICAL SURVEYS TO NGS: FIELD DATA COLLECTION AND GEOGRAPHIC INFORMATION SYSTEM (GIS) STANDARDS. OBSTRUCTION DATA SHOWN WAS COLLECTED IN THE RUNWAY APPROACHES, ONLY.
  2. DUE TO THE LARGE QUANTITY OF OBSTRUCTIONS POINTS, ONLY SAMPLE POINTS WITH THEIR CORRESPONDING IDENTIFIER ARE SHOWN. SHEET 7 PROVIDES THE DATA OBSTRUCTION TABLES FOR THE RUNWAY 35 SAMPLE POINTS. THE COMPLETE DATA FOR THIS RUNWAY IS AVAILABLE FOR REVIEW UNDER SEPARATE COVER.
  3. ROADWAY ELEVATIONS NOT INCLUDED AS PART OF THE OBSTRUCTION SURVEY DATA WERE GENERATED FROM GROUND CONTOUR ELEVATIONS. ROADWAY ELEVATIONS INCLUDE THE FAR PART 77 TRAVERSE WAY ADJUSTMENT.

FILE NAME = N:\Projects\ANY\KS\061210\000\01\_Design\Drawings\Aviation\061210Runway1.dgn  
 DATE/TIME = 9/5/2023 10:26:23  
 USER = 4066

REVISIONS			
NO.	Description	Date	By



PROJECT NAME: AIRPORT LAYOUT PLAN  
 PROJECT NUMBER: MIDDLEBURY-AV-FY21-002  
 FILE NAME: 061210Runway1.dgn  
 PROJECT LEADER: POM  
 DESIGNED BY: AJF  
 RUNWAY 1 APPROACH PLAN

PLOT DATE: 9/5/2023  
 DRAWN BY: MED  
 CHECKED BY: POM  
 SHEET 7 OF 11



RUNWAY 1												
PT#	OBJECT	OBJ. ELEV.	PART 77 APPROACH 20:1		THRESHOLD SITING SURFACE 20 :1 (#2)		THRESHOLD SITING SURFACE 20 :1 (#4)		EASTING	NORTHING	TRIGGERING EVENT	DISPOSITION
			PART 77 ELEV.	PENETRATION (FT.)	TSS #2 ELEV.	PENETRATION (FT.)	TSS #4 ELEV.	PENETRATION (FT.)				
11263	TREE	567.385	559.449	7	576.997	-9	566.997	0	1483494	539051	EXISTING CONDITION	TO BE REMOVED
11311	TREE	509.436	493.141	16	-	-	500.688	8	1483523	540378	EXISTING CONDITION	TO BE REMOVED
12159	TREE	511.310	503.281	8	520.829	-9	510.829	0	1483927	540188	EXISTING CONDITION	TO BE REMOVED
15247	TREE	495.707	493.845	1	-	-	-	-	1483602	540367	EXISTING CONDITION	TO BE REMOVED
15295	TREE	493.788	492.677	1	-	-	-	-	1483839	540398	EXISTING CONDITION	TO BE REMOVED
15471	TREE	518.949	516.830	2	-	-	-	-	1483804	539913	EXISTING CONDITION	TO BE REMOVED
15527	TREE	545.075	531.750	13	549.298	-4	539.298	5	1483948	539619	EXISTING CONDITION	TO BE REMOVED
15639	TREE	574.996	569.630	5	-	-	-	-	1483453	538846	EXISTING CONDITION	TO BE REMOVED
15647	TREE	550.630	549.190	1	-	-	-	-	1483565	539258	EXISTING CONDITION	TO BE REMOVED
15695	TREE	594.326	587.435	6	-	-	-	-	1483783	538500	EXISTING CONDITION	TO BE REMOVED
15719	TREE	596.851	587.239	9	604.787	-7	594.787	2	1483464	538494	EXISTING CONDITION	TO BE REMOVED
17055	TREE	594.059	538.608	55	-	-	-	-	1484155	539488	EXISTING CONDITION	TO BE REMOVED
17311	TREE	639.417	596.537	42	-	-	604.085	35	1484281	538333	EXISTING CONDITION	TO BE REMOVED
20279	TREE	577.536	568.658	8	-	-	-	-	1483284	538860	EXISTING CONDITION	TO BE REMOVED
191999	TREE	589.647	566.124	23	-	-	-	-	1484255	538941	EXISTING CONDITION	TO BE REMOVED
193815	TREE	579.630	536.257	43	-	-	543.805	35	1484111	539534	EXISTING CONDITION	TO BE REMOVED
222691	TREE	539.939	530.926	9	-	-	-	-	1483876	539633	EXISTING CONDITION	TO BE REMOVED
227032	TREE	602.068	575.758	26	-	-	583.306	18	1484200	538746	EXISTING CONDITION	TO BE REMOVED
228688	TREE	599.499	588.807	10	-	-	-	-	1483236	538455	EXISTING CONDITION	TO BE REMOVED
231376	TREE	507.523	502.543	4	-	-	510.090	-2	1483508	540190	EXISTING CONDITION	TO BE REMOVED
258120	TREE	557.817	543.200	14	560.748	-2	550.748	7	1484028	539393	EXISTING CONDITION	TO BE REMOVED
261960	TREE	600.623	597.311	3	-	-	-	-	1483484	538293	EXISTING CONDITION	TO BE REMOVED
265216	TREE	615.668	600.458	15	-	-	-	-	1484378	538258	EXISTING CONDITION	TO BE REMOVED
336067	TREE	511.215	503.379	7	-	-	510.927	0	1484015	540189	EXISTING CONDITION	TO BE REMOVED
336627	TREE	490.024	486.103	3	493.650	-3	493.650	-3	1483504	540519	EXISTING CONDITION	TO BE REMOVED
340426	TREE	504.891	492.306	12	-	-	-	-	1483473	540394	EXISTING CONDITION	TO BE REMOVED
340514	TREE	511.379	503.517	7	-	-	-	-	1484026	540186	EXISTING CONDITION	TO BE REMOVED
11751	TREE	513.072	-	-	-	-	490.918	22	1483942	540587	EXISTING CONDITION	TO BE REMOVED
15119	TREE	492.376	-	-	502.225	-9	492.225	0	1483588	540550	EXISTING CONDITION	TO BE REMOVED
336235	TREE	491.525	-	-	497.207	-5	487.207	4	1483855	540659	EXISTING CONDITION	TO BE REMOVED

- object is outside the limits of the surface

RUNWAY 19												
PT#	OBJECT	OBJ. ELEV.	PART 77 APPROACH 20:1		THRESHOLD SITING SURFACE 20 :1 (#2)		THRESHOLD SITING SURFACE 20 :1 (#4)		EASTING	NORTHING	TRIGGERING EVENT	DISPOSITION
			PART 77 ELEV.	PENETRATION (FT.)	TSS #2 ELEV.	PENETRATION (FT.)	TSS #4 ELEV.	PENETRATION (FT.)				
11471	TREE	575.819	562.199	13	-	-	562.199	13	1483207.102	545691.485	EXISTING CONDITION	TO BE REMOVED
11487	TREE	535.671	533.082	2	543.082	-7	533.082	2	1483441.103	545116.126	EXISTING CONDITION	TO BE REMOVED
30391	TREE	558.978	550.969	8	-	-	-	-	1483156.091	545465.196	EXISTING CONDITION	TO BE REMOVED
30423	TREE	584.058	572.545	11	-	-	-	-	1484039.324	545924.311	EXISTING CONDITION	TO BE REMOVED
30439	TREE	571.055	558.614	12	-	-	558.614	12	1483949.296	545642.762	EXISTING CONDITION	TO BE REMOVED
30503	TREE	567.646	545.802	21	-	-	-	-	1484006.171	545388.152	EXISTING CONDITION	TO BE REMOVED
297992	TREE	554.005	535.491	18	-	-	-	-	1483187.189	545156.465	EXISTING CONDITION	TO BE REMOVED
298352	TREE	547.868	540.395	7	-	-	540.395	7	1483217.774	545255.53	EXISTING CONDITION	TO BE REMOVED
300392	TREE	548.75	549.608	0	-	-	549.608	0	1483199.613	545439.324	EXISTING CONDITION	TO BE REMOVED
302368	TREE	564.476	544.777	19	-	-	544.777	19	1483948.021	545365.845	EXISTING CONDITION	TO BE REMOVED
326038	TREE	558.887	568.285	-9	-	-	-	-	1483400.359	545819.251	EXISTING CONDITION	TO BE REMOVED
326766	TREE	561.654	554.789	6	-	-	554.789	6	1483207.804	545543.231	EXISTING CONDITION	TO BE REMOVED
329078	TREE	546.225	548.776	-2	-	-	-	-	1483663.788	545437.051	EXISTING CONDITION	TO BE REMOVED
330830	TREE	563.186	567.438	-4	-	-	-	-	1483858.553	545816.508	EXISTING CONDITION	TO BE REMOVED
332070	TREE	552.848	554.576	-1	-	-	554.576	-1	1483922.148	545561.126	EXISTING CONDITION	TO BE REMOVED
332894	TREE	575.467	571.588	3	-	-	571.588	3	1483968.653	545902.956	EXISTING CONDITION	TO BE REMOVED

- object is outside the limits of the surface

FILE NAME = \\p:\projects\ANN\KS\061210\000\09\_Design\Drawings\Aviation\061210\obstruction\_data.dgn  
DATE/TIME = 9/5/2023 10:26:23  
USER = 4066

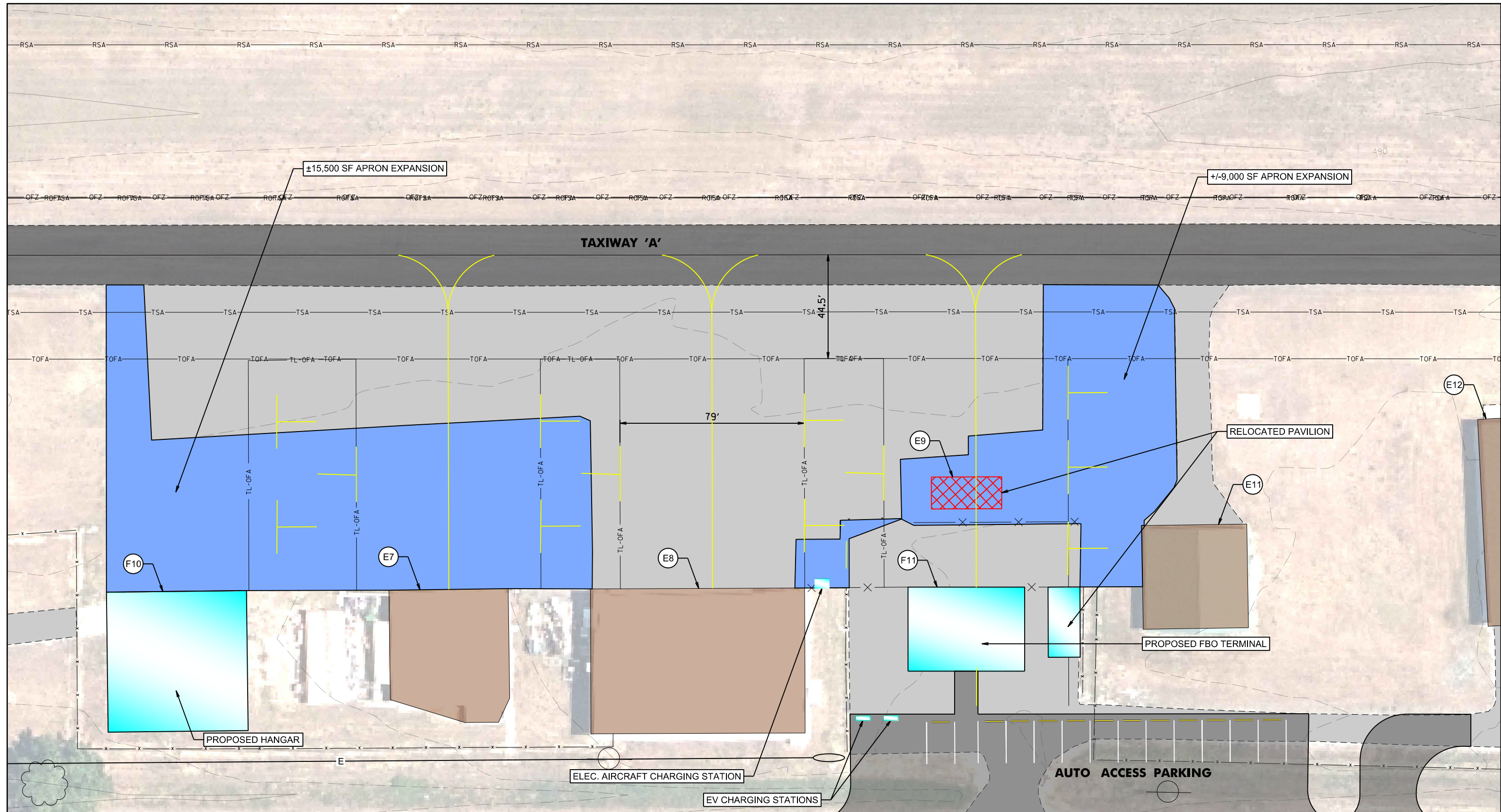
REVISIONS			
NO.	Description	Date	By



PROJECT NAME: AIRPORT LAYOUT PLAN  
PROJECT NUMBER: MIDDLEBURY-AV-FY21-002  
FILE NAME: 061210obstruction\_data.dgn PLOT DATE: 9/5/2023  
PROJECT LEADER: POM DRAWN BY: MED  
DESIGNED BY: AJF CHECKED BY: POM  
OBSTRUCTION DATA SHEET SHEET 8 OF 11

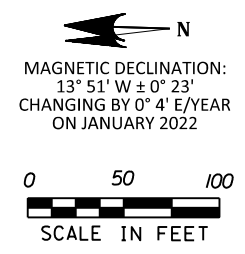


FILE NAME = \\p:\projects\NY\K5\061210\000\01\_Design\Drawings\Aviation\061210\terminal\_area.dgn  
 DATE/TIME = 9/5/2023 10:26:23  
 USER = 4066



**LEGEND**

- 800 — ELEVATION CONTOURS
- TREELINES
- RPZ — RUNWAY PROTECTION ZONE (RPZ)
- RSA — RUNWAY SAFETY AREA (RSA)
- ROFA — RUNWAY OBJECT FREE AREA (ROFA)
- ROFZ — RUNWAY OBSTACLE FREE ZONE (ROFZ)
- RVZ — RUNWAY VISIBILITY ZONE (RVZ)
- TSA — TAXIWAY SAFETY AREA (TSA)
- TOFA — TAXIWAY OBJECT FREE AREA (TOFA)
- — — — — EXISTING AIRPORT PROPERTY LINE
- — — — — EXISTING FENCE
- — — — — PROPOSED FENCE
- — — — — FUTURE 3-PHASE POWER
- — — — — SURVEY MARKER
- ▲ — FUTURE HANGER DEVELOPMENT
- — FUTURE APRONTAXIWAY
- — EXISTING APRONTAXIWAY
- — EXISTING BUILDING
- — AIRFIELD PAVEMENT
- — EXISTING AVIGATION EASEMENTS



**REVISIONS**

NO.	Description	Date	By

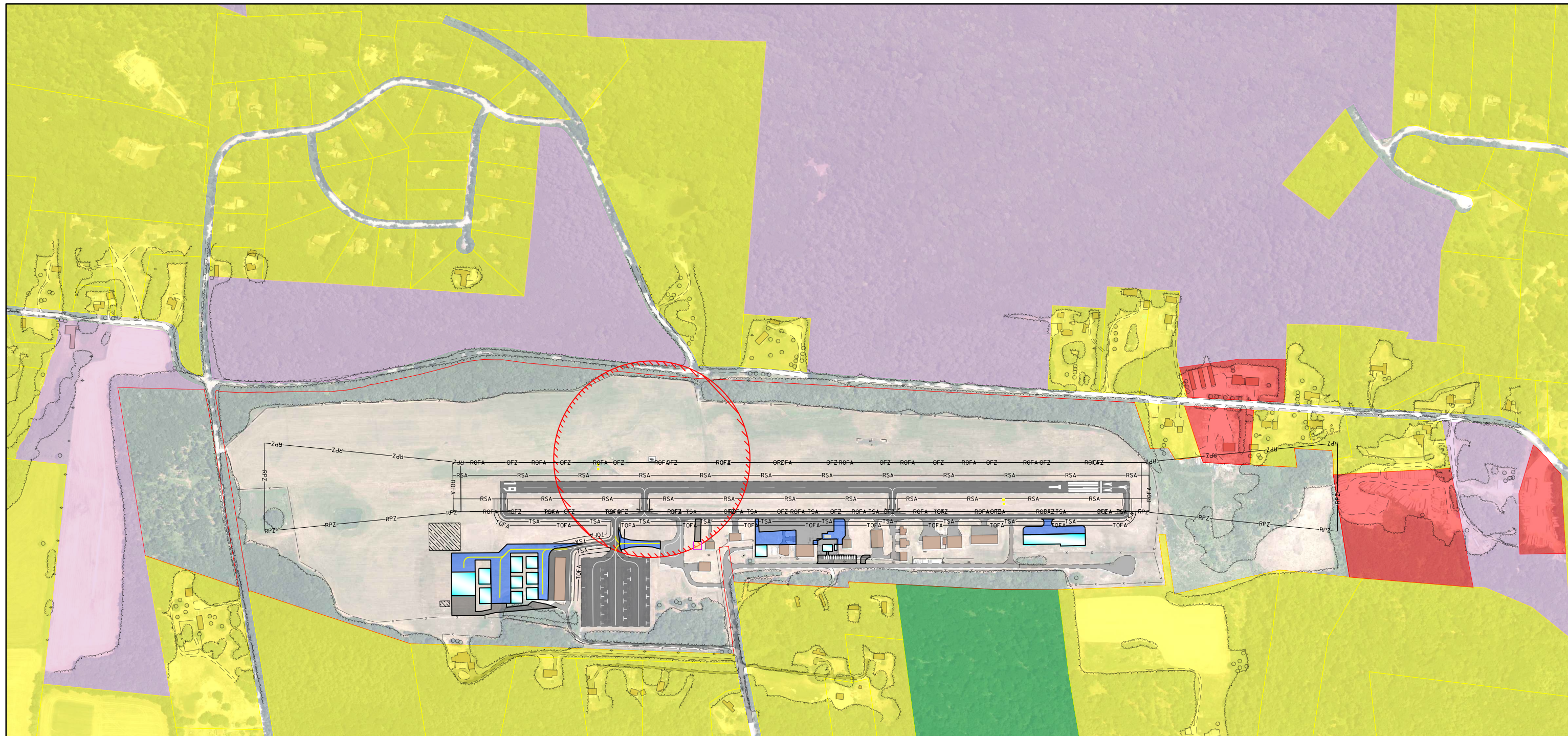


PROJECT NAME: AIRPORT LAYOUT PLAN  
 PROJECT NUMBER: MIDDLEBURY-AV-FY21-002  
 FILE NAME: 061210terminal\_area.dgn  
 PROJECT LEADER: POM  
 DESIGNED BY: AJF  
 TERMINAL AREA PLAN

PLOT DATE: 9/5/2023  
 DRAWN BY: MED  
 CHECKED BY: POM  
 SHEET 9 OF 11



FILE NAME = N:\p\projects\ANN\KS\061210\000\09\_Design\Drawings\Aviation\Consultants\061210\land\_use\_plan.dgn  
 DATE/TIME = 9/5/2023 10:26:23  
 USER = 4066



← N  
 MAGNETIC DECLINATION:  
 13° 51' W ± 0° 23'  
 CHANGING BY 0° 4' E/YEAR  
 ON JANUARY 2022

**LEGEND**

- RSA — RUNWAY SAFETY AREA (RSA)
- ROFA — RUNWAY OBJECT FREE AREA (ROFA)
- ROFZ — RUNWAY OBSTACLE FREE ZONE (ROFZ)
- RPZ — RUNWAY PROTECTION ZONE (RPZ)
- FENCE
- TREE LINE
- AIRPORT PROPERTY LINES
- NAVAID CRITICAL AREA
- COMMERCIAL
- MISCELLANEOUS
- FARM
- RESIDENTIAL
- FUTURE HANGER DEVELOPMENT
- FUTURE APRON/TAXIWAY
- EXISTING BUILDING
- AIRFIELD PAVEMENT

REVISIONS			
NO.	Description	Date	By



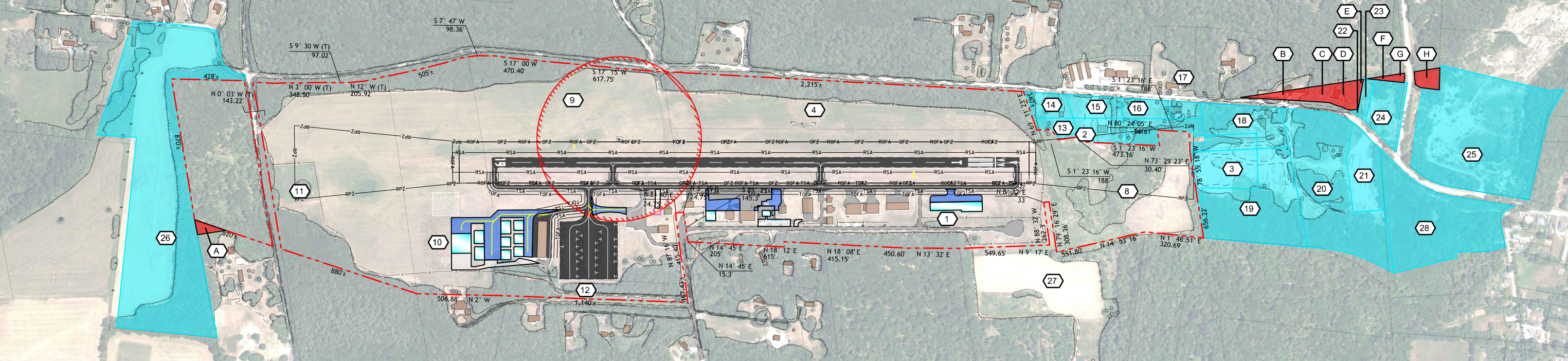
PROJECT NAME: AIRPORT LAYOUT PLAN  
 PROJECT NUMBER: MIDDLEBURY-AV-FY21-002  
 FILE NAME: 061210land\_use\_plan.dgn  
 PROJECT LEADER: POM  
 DESIGNED BY: AJF  
 LAND USE PLAN  
 PLOT DATE: 9/5/2023  
 DRAWN BY: MED  
 CHECKED BY: POM  
 SHEET 10 OF 11



MIDDLEBURY STATE AIRPORT - EXISTING EXHIBIT "A" PARCELS							
MAP NO.	GRANTOR	GRANTEE	DATE	BOOK/PAGE	ACREAGE	TYPE	COMMENTS
1	TOWN OF MIDDLEBURY	STATE OF VERMONT	3/20/1970	66/491		FEE	FAAP 9-43-013-C501*
2	TOWN OF MIDDLEBURY	STATE OF VERMONT	3/20/1970	66/491	±36.8 A	EASEMENT	FAAP 9-43-013-C501*
3	TOWN OF MIDDLEBURY	STATE OF VERMONT	3/20/1970	66/494		EASEMENT	FAAP 9-43-013-C501*
4	D. % I. McGETTRICK	STATE OF VERMONT	12/9/1976	81/129	±17 A	FEE	ADAP 5-50-0011-01
8	F.A. & S.M. PLOOF	STATE OF VERMONT	10/1/1986	116/619	±12.2 A	FEE	STATE FUNDED
9	G.M. QUESNEL	STATE OF VERMONT	12/1/1987	123/267	±30.74 A	FEE	AIP 3-50-0011-02
10	TOWN OF MIDDLEBURY	STATE OF VERMONT	6/1/1988	125/199	±16.93 A	FEE	AIP 3-50-0011-02
11	W.R. & J.G. THOMAS	STATE OF VERMONT	6/1/1988	125/101	±40.73 A	FEE	AIP 3-50-0011-02
12	W.F. PALMER JR.	STATE OF VERMONT	6/1/1988	125/199	±4.66 A	FEE	AIP 3-50-0011-02
13	R.H. & A.A. POIRIER	STATE OF VERMONT	1/1/2004	206/298	±0.37 A	FEE	
14	L.A. & L.A. POIRIER	STATE OF VERMONT	3/10/2015	176/252	±1.43 A	EASEMENT**	AIP 3-50-0011-10-2015
15	SEAN BROE	STATE OF VERMONT	9/22/2015	180/150	±2.19 A	EASEMENT**	AIP 3-50-0011-11-2016
16	P. NATH & P. WALDRON	STATE OF VERMONT	5/11/2015	277/380	±1.85 A	EASEMENT**	AIP 3-50-0011-10-2015
17	L.H. & L.J. HENKOFF	STATE OF VERMONT	11/28/2016	239/313-315	±1 A	EASEMENT	AIP 3-50-0011-13-2017
18	S.A. & T.J. RHEAUME IRENE MASTERSON ESTATE	STATE OF VERMONT	4/14/2015	276/559	±3.27 A	EASEMENT**	AIP 3-50-0011-10-2015
19	PAQUETTE EQUIPMENT, LLC	STATE OF VERMONT	6/3/2015	277/666	±7.93 A	EASEMENT**	AIP 3-50-0011-10-2015
20	JOSEPH P. CARRARA & SONS, INC.	STATE OF VERMONT	5/8/2015	277/384	±8.31 A	EASEMENT**	AIP 3-50-0011-10-2015
21	BOURDEAU REALTY, LLC	STATE OF VERMONT	5/5/2015	277/395	±2 A	EASEMENT**	AIP 3-50-0011-10-2015
22	GEORGE A. ELY	STATE OF VERMONT	3/17/2015	276/361	±683 SF	EASEMENT**	AIP 3-50-0011-10-2015
23	S.B. & G.J. WARNER	STATE OF VERMONT	5/22/2015	277/673	±0.64 A	EASEMENT**	AIP 3-50-0011-10-2015
24	B. ANDREW & A.L. PERKINS	STATE OF VERMONT	6/2/2015	278/847	±1.39 A	EASEMENT**	AIP 3-50-0011-10-2015
25	JOSEPH P. CARRARA & SONS, INC.	STATE OF VERMONT	5/11/2015	277/388	±12.12 A	EASEMENT**	AIP 3-50-0011-10-2015
26	K. RIVAS & S. ATHERTON	STATE OF VERMONT	9/29/2015	280/157	±20.53 A	EASEMENT**	AIP 3-50-0011-11-2016
27	R.P. & J.M. MILLER	STATE OF VERMONT	1/3/2017	254/589-593	±0.22 A	FEE	AIP 3-50-0011-13-2017
28	OTTER VALLEY EQUIPMENT, INC.	STATE OF VERMONT	11/3/2016	66/481-482	±7.09 A	EASEMENT	AIP 3-50-0011-13-2017

MIDDLEBURY STATE AIRPORT - PROPOSED EASEMENTS			
MAP NO.	EXISTING LAND USE	ACREAGE	PURPOSE
A	RESIDENTIAL	±0.18 A	HEIGHT CONTROL
B	RESIDENTIAL	±0.48 A	HEIGHT CONTROL
C	RESIDENTIAL	±0.21 A	HEIGHT CONTROL
D	RESIDENTIAL	±0.64 A	HEIGHT CONTROL
E	RESIDENTIAL	±0.03 A	HEIGHT CONTROL
F	RESIDENTIAL	±0.11 A	HEIGHT CONTROL
G	RESIDENTIAL	±0.03 A	HEIGHT CONTROL
H	RESIDENTIAL	±0.4 A	HEIGHT CONTROL

\*FAA GRANT ISSUED TO TOWN OF MIDDLEBURY FOR ACQUISITION OF 1, 2, AND 3. ALL LAND WAS DEEDED BY TOWN TO STATE ON 3-20-70.  
 \*\*EASEMENT FOR RIGHT OF FLIGHT, NOISE, CUT/TRIM TREES/OBSTRUCTIONS, INGRESS AND EGRESS.  
 NOTE: PARCELS 5-7 WERE AVIGATION EASEMENTS THAT WERE LATER ACQUIRED IN FEE UNDER PARCEL 9



FILE NAME = N:\Projects\AV\NY\KS\061210\000\01\_Design\Drawings\Aviation\Consultants\061210\property\_map.dgn  
 DATE/TIME = 9/5/2023 10:26:23  
 USER = 4066

**LEGEND**

- |  |   |  |                               |
|--|---|--|-------------------------------|
|  | EXISTING BUILDING                       |  | PARCEL NUMBER                 |
|  | AIRFIELD PAVEMENT                       |  | PARCEL LINE                   |
|  | ELEVATION CONTOURS                      |  | EXISTING FENCE LINE           |
|  | TREELINES                               |  | SURVEY MARKER                 |
|  | RPZ — RUNWAY PROTECTION ZONE (RPZ)      |  | AIRPORT REFERENCE POINT (ARP) |
|  | RSA — RUNWAY SAFETY AREA (RSA)          |  | EXISTING WINDCONE             |
|  | ROFA — RUNWAY OBJECT FREE AREA (ROFA)   |  | FUTURE HANGER DEVELOPMENT     |
|  | ROFZ — RUNWAY OBSTACLE FREE ZONE (ROFZ) |  | FUTURE APRON/TAXIWAY          |
|  | RVZ — RUNWAY VISIBILITY ZONE (RVZ)      |  | PAVEMENT/BUILDING REMOVAL     |
|  | TSA — TAXIWAY SAFETY AREA (TSA)         |  | EXISTING AVIGATION EASEMENTS  |
|  | TOFA — TAXIWAY OBJECT FREE AREA (TOFA)  |  | FUTURE AVIGATION EASEMENTS    |
|  | EXISTING AIRPORT PROPERTY LINE          |  | FUTURE TAXIWAY/TAXILANE       |
|  | NAVAID CRITICAL AREA                    |  | OBJECT FREE AREA/SAFETY AREA  |

N  
 MAGNETIC DECLINATION:  
 13° 51' W ± 0° 23'  
 CHANGING BY 0° 4' E/YEAR  
 ON JANUARY 2022  
 0 300 600  
 SCALE IN FEET

REVISIONS			
NO.	Description	Date	By



PROJECT NAME: AIRPORT LAYOUT PLAN  
 PROJECT NUMBER: MIDDLEBURY-AV-FY21-002  
 FILE NAME: 061210property\_map.dgn PLOT DATE: 9/5/2023  
 PROJECT LEADER: POM DRAWN BY: MED  
 DESIGNED BY: AJF CHECKED BY: POM  
 AIRPORT PROPERTY MAP SHEET II OF II